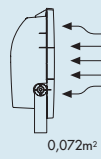
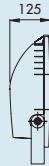
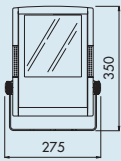


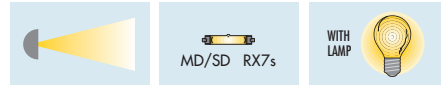
HORUS 1



SYMMETRICAL DIFFUSED OPTICS

WIRED VERSIONS WITH P.F. CORRECTION COMPLETE WITH LAMP - IP65 - CLASS II

GW85302S



Code	Lamp power	Lamp supplied	Lamp holder	Lamp current	Colour	Weight (Kg)	Pack Carton
VOLTAGE: 230 V - 50 Hz							
GW 85 302 S	70 W	SD	RX7s	1 A	Smoke grey	3.5	1
GW 85 302 M	70 W	MD	RX7s	1 A	Smoke grey	3.5	1

NON-WIRED VERSIONS

GW85393



Code	No. lamps	Max. lamp power	Lamp type	Lamp holder	Lamp current	Colour	Weight (Kg)	Pack Carton
GW 85 393	1	70 W	-	RX7s	-	Smoke grey	2	1

WIRED VERSIONS - IP65 - CLASS II

GW85306



Code	No. lamps	Lamp power	Lamp type	Lamp holder	Lamp current	Colour	Weight (Kg)	Pack Carton
VOLTAGE: 230 V - 50 Hz								
GW 85 306	2	18 W	FSQ	G24d-2	0.375 A	Smoke grey	2.7	1
VOLTAGE: 240 V - 50 Hz								
GW 85 316	2	18 W	FSD	G24d-2	0.375 A	Smoke grey	2.7	1
VOLTAGE: 220 V - 60 Hz								
GW 85 326	2	18 W	FSD	G24d-2	0.375 A	Smoke grey	2.7	1

NEW

HORUS RANGE

THERMOPLASTIC FLOODLIGHTS

GEWISS

HORUS RANGE

GW85392



NON-WIRED VERSIONS

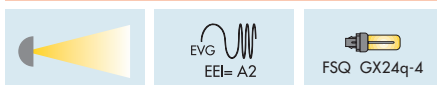


Code	No. lamps	Max. lamp power	Lamp type	Lamp holder	Lamp current	Colour	Weight (Kg)	Pack Carton
GW 85 392	2	18 W	-	G24d-2		Smoke grey	2	1

GW85366



WIRED VERSIONS WITH P.F. CORRECTION - IP65 - CLASS II ELECTRONIC POWER SUPPLY



Code	Lamp power	Lamp type	Lamp holder	Lamp current	Colour	Weight (Kg)	Pack Carton
VOLTAGE: 220 / 240 V - 50 / 60 Hz							
GW 85 366	42 W	FSQ	GX24q-4	0.32 A	Smoke grey	2.2	1

GW85396

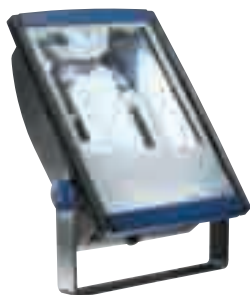


NON-WIRED VERSIONS



Code	Max. lamp power	Lamp type	Lamp holder	Lamp current	Colour	Weight (Kg)	Pack Carton
GW 85 396	42 W	-	GX24q-4		Smoke grey	2	1

GW85367



WIRED VERSIONS WITH P.F. CORRECTION - IP65 - CLASS II EMERGENCY VERSIONS



Code	No. lamps	Lamp power	Lamp type	Lamp holder	Duration	Light flux in emerg.	Colour	Weight (Kg)	Pack Carton
VOLTAGE: 220 / 240 V - 50 / 60 Hz									
GW 85 367	1	32 W	FSQ	GX24q-3	1 h	720	Smoke grey	2.5	1

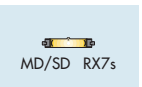
NEW

ASYMMETRICAL DIFFUSED OPTICS

GW85301S



WIRED VERSIONS WITH P.F. CORRECTION COMPLETE WITH LAMP - IP65 - CLASS II



Code	Lamp power	Lamp supplied	Lamp holder	Lamp current	Colour	Weight (Kg)	Pack Carton
VOLTAGE: 230 V - 50 Hz							
GW 85 301 S	70 W	SD	RX7s	1 A	Smoke grey	3.5	1
GW 85 301 M	70 W	MD	RX7s	1 A	Smoke grey	3.5	1
VOLTAGE: 240 V - 50 Hz							
GW 85 311 S	70 W	SD	RX7s	1 A	Smoke grey	3.5	1
GW 85 311 M	70 W	MD	RX7s	1 A	Smoke grey	3.5	1
VOLTAGE: 220 V - 60 Hz							
GW 85 321 S	70 W	SD	RX7s	1 A	Smoke grey	3.5	1
GW 85 321 M	70 W	MD	RX7s	1 A	Smoke grey	3.5	1

GW85391



NON-WIRED VERSIONS



Code	Max. lamp power	Lamp type	Lamp holder	Lamp current	Colour	Weight (Kg)	Pack Carton
GW 85 391	70 W	-	RX7s		Smoke grey	2	1

COMPLEMENTARY ITEMS



COMPLEMENTARY ITEMS FOR INSTALLATION

Code	Description	Weight (Kg)	Pack Carton
GW 85 371	Anti-glare louvre	0.5	1/2
GW 85 376	Blue filter	0.6	1/2
GW 85 377	Red filter	0.6	1/2
GW 85 378	Green filter	0.6	1/2
GW 85 379	Yellow filter	0.6	1/2

GW88292



SPARE PARTS

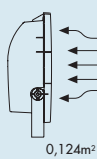
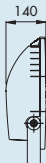
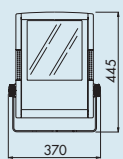
Code	Description	Material	Weight (Kg)	Pack Carton
GW 88 292	Glass	Tempered glass	1	1

HORUS RANGE

THERMOPLASTIC FLOODLIGHTS

GEWISS

HORUS 2



HORUS RANGE

SYMMETRICAL DIFFUSED OPTICS

WIRED VERSIONS WITH P.F. CORRECTION COMPLETE WITH LAMP - IP65 - CLASS II

GW85001S



Code	Lamp power	Lamp supplied	Lamp holder	Lamp current	Colour	Weight (Kg)	Pack Carton
VOLTAGE: 230 V - 50 Hz							
GW 85 001 S	70 W	SD	RX7s	1 A	Smoke grey	5.3	1
GW 85 001 M	70 W	MD	RX7s	1 A	Smoke grey	5.3	1
GW 85 002 S	150 W	SD	RX7s	1.8 A	Smoke grey	6.3	1
GW 85 002 M	150 W	MD	RX7s	1.8 A	Smoke grey	6.3	1
GW 85 003 Q	80 W	QE	E27	0.8 A	Smoke grey	5	1
GW 85 004 M	100 W	ME	E27	1.1 A	Smoke grey	5.4	1
GW 85 005 S	70 W	ST*	E27	0.98 - 1 A	Smoke grey	5.3	1
VOLTAGE: 240 V - 50 Hz							
GW 85 011 S	70 W	SD	RX7s	1 A	Smoke grey	5.3	1
GW 85 011 M	70 W	MD	RX7s	1 A	Smoke grey	5.3	1
GW 85 012 S	150 W	SD	RX7s	1.8 A	Smoke grey	6.3	1
GW 85 012 M	150 W	MD	RX7s	1.8 A	Smoke grey	6.3	1
GW 85 013 Q	80 W	QE	E27	0.8 A	Smoke grey	5	1
GW 85 014 M	100 W	ME	E27	1.1 A	Smoke grey	5.4	1
GW 85 015 S	70 W	ST*	E27	0.98 - 1 A	Smoke grey	5.3	1
VOLTAGE: 220 V - 60 Hz							
GW 85 021 S	70 W	SD	RX7s	1 A	Smoke grey	5.3	1
GW 85 021 M	70 W	MD	RX7s	1 A	Smoke grey	5.3	1
GW 85 022 S	150 W	SD	RX7s	1.8 A	Smoke grey	6.3	1
GW 85 022 M	150 W	MD	RX7s	1.8 A	Smoke grey	6.3	1
GW 85 023 Q	80 W	QE	E27	0.8 A	Smoke grey	5	1
GW 85 024 M	100 W	ME	E27	1.1 A	Smoke grey	5.4	1
GW 85 025 S	70 W	ST*	E27	0.98 - 1 A	Smoke grey	5.3	1

* Lamp without built-in ignitor.

NON-WIRED VERSIONS

GW85091



Code	Max. lamp power	Lamp type	Lamp holder	Lamp current	Colour	Weight (Kg)	Pack Carton
GW 85 091	150 W	-	RX7s		Smoke grey	4	1
GW 85 092	100 W	-	E27		Smoke grey	3.9	1

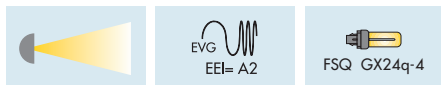
APPLICATIONS: GW85091, device suitable for 70 and 150 W lamps.

ACCESSORIES SUPPLIED: structural components: reflector, accessory-holding plate. Electrical components: lampholder with cables, supply terminal. Devices are supplied with standard service items.

GW85066



WIRED VERSIONS WITH P.F. CORRECTION - IP65 - CLASS II ELECTRONICALLY POWER SUPPLY



Code	No. lamps	Lamp power	Lamp type	Lamp holder	Lamp current	Colour	Weight (Kg)	Pack Carton
VOLTAGE: 220 / 240 V - 50 / 60 Hz								
GW 85 066	2	42 W	FSQ	GX24q-4	0.32 A	Smoke grey	4	1

GW85097



NON-WIRED VERSIONS



Code	No. lamps	Max. lamp power	Lamp type	Lamp holder	Lamp current	Colour	Weight (Kg)	Pack Carton
GW 85 097	2	42 W	-	GX24q-4		Smoke grey	3.8	1

GW85006



WIRED VERSIONS WITH P.F. CORRECTION - IP65 - CLASS II



Code	No. lamps	Lamp power	Lamp type	Lamp holder	Lamp current	Colour	Weight (Kg)	Pack Carton
VOLTAGE: 230 V - 50 Hz								
GW 85 006	4	18 W	FSD	2G11	0.375 A	Smoke grey	5.2	1
VOLTAGE: 240 V - 50 Hz								
GW 85 016	4	18 W	FSD	2G11	0.375 A	Smoke grey	5.2	1
VOLTAGE: 220 V - 60 Hz								
GW 85 026	4	18 W	FSD	2G11	0.375 A	Smoke grey	5.2	1

GW85067



WIRED VERSIONS WITH P.F. CORRECTION - IP65 - CLASS II EMERGENCY VERSIONS



Code	No. lamps	Lamp power	Lamp type	Lamp holder	Duration	Light flux in emerg.	Colour	Weight (Kg)	Pack Carton
VOLTAGE: 220 / 240 V - 50 / 60 Hz									
GW 85 067	2	32 W	FSQ	GX24q-3	1 h	720	Smoke grey	4	1

NEW

ASYMMETRICAL DIFFUSED OPTICS

GW85031S



WIRED VERSIONS WITH P.F. CORRECTION COMPLETE WITH LAMP - IP65 - CLASS II



Code	Lamp power	Lamp supplied	Lamp holder	Lamp current	Colour	Weight (Kg)	Pack Carton
VOLTAGE: 230 V - 50 Hz							
GW 85 031 S	70 W	SD	RX7s	1 A	Smoke grey	5.3	1
GW 85 031 M	70 W	MD	RX7s	1 A	Smoke grey	5.3	1
GW 85 032 S	70 W	ST	E27	1 A	Smoke grey	5.3	1
GW 85 033 S	150 W	SD	RX7s	1.8 A	Smoke grey	6.3	1
GW 85 033 M	150 W	MD	RX7s	1.8 A	Smoke grey	6.3	1
VOLTAGE: 240 V - 50 Hz							
GW 85 036 S	70 W	SD	RX7s	1 A	Smoke grey	5.3	1
GW 85 036 M	70 W	MD	RX7s	1 A	Smoke grey	5.3	1
GW 85 037 S	70 W	ST	E27	1 A	Smoke grey	5.3	1
GW 85 038 S	150 W	SD	RX7s	1.8 A	Smoke grey	6.3	1
GW 85 038 M	150 W	MD	RX7s	1.8 A	Smoke grey	6.3	1
VOLTAGE: 220 V - 60 Hz							
GW 85 041 S	70 W	SD	RX7s	1 A	Smoke grey	5.3	1
GW 85 041 M	70 W	MD	RX7s	1 A	Smoke grey	5.3	1
GW 85 042 S	70 W	ST	E27	1 A	Smoke grey	5.3	1
GW 85 043 S	150 W	SD	RX7s	1.8 A	Smoke grey	6.3	1
GW 85 043 M	150 W	MD	RX7s	1.8 A	Smoke grey	6.3	1

GW85093



NON-WIRED VERSIONS



Code	Max. lamp power	Lamp type	Lamp holder	Lamp current	Colour	Weight (Kg)	Pack Carton
GW 85 093	150 W	-	RX7s	-	Smoke grey	4	1
GW 85 094	70 W	-	E27	-	Smoke grey	3.9	1

APPLICATIONS: GW85093, device suitable for 70 and 150 W lamps.

ACCESSORIES SUPPLIED: structural components: reflector, accessory-holding plate. Electrical components: lampholder with cables, supply terminal. Devices are supplied with standard service items.

CIRCULAR RESTRICTED BEAM OPTICS

GW85051S



WIRED VERSIONS WITH P.F. CORRECTION COMPLETE WITH LAMP - IP65 - CLASS II



Code	Lamp power	Lamp supplied	Lamp holder	Lamp current	Colour	Weight (Kg)	Pack Carton
VOLTAGE: 230 V - 50 Hz							
GW 85 051 S	70 W	SD	RX7s	1 A	Smoke grey	5.3	1
GW 85 051 M	70 W	MD	RX7s	1 A	Smoke grey	5.3	1
GW 85 052 S	150 W	SD	RX7s	1.8 A	Smoke grey	6.3	1
GW 85 052 M	150 W	MD	RX7s	1.8 A	Smoke grey	6.3	1
VOLTAGE: 240 V - 50 Hz							
GW 85 056 S	70 W	SD	RX7s	1 A	Smoke grey	5.3	1
GW 85 056 M	70 W	MD	RX7s	1 A	Smoke grey	5.3	1
GW 85 057 S	150 W	SD	RX7s	1.8 A	Smoke grey	6.3	1
GW 85 057 M	150 W	MD	RX7s	1.8 A	Smoke grey	6.3	1
VOLTAGE: 220 V - 60 Hz							
GW 85 061 S	70 W	SD	RX7s	1 A	Smoke grey	5.3	1
GW 85 061 M	70 W	MD	RX7s	1 A	Smoke grey	5.3	1
GW 85 062 S	150 W	SD	RX7s	1.8 A	Smoke grey	6.3	1
GW 85 062 M	150 W	MD	RX7s	1.8 A	Smoke grey	6.3	1

GW85095



NON-WIRED VERSION



Code	Max. lamp power	Lamp type	Lamp holder	Lamp current	Colour	Weight (Kg)	Pack Carton
GW 85 095	150 W	-	RX7s		Smoke grey	4	1

APPLICATIONS: GW85093, device suitable for 70 and 150 W lamps.

ACCESSORIES SUPPLIED: structural components: reflector, accessory-holding plate. Electrical components: lampholder with cables, supply terminal. Devices are supplied with standard service items.

COMPLEMENTARY ITEMS



COMPLEMENTARY ITEMS FOR INSTALLATION

Code	Description	Weight (Kg)	Pack Carton
GW 85 071	Anti-glare louvre	1.5	1/5
GW 85 082	Circular anti-glare		1/5
GW 85 072	Protective wire guard	1	1/5
GW 85 073	Barn door shutter	1.6	1/5
GW 85 074	Visor	1.2	1/2
GW 85 075	Diffused glass	1.1	1/2
GW 85 076	Blue filter	1.2	1/2
GW 85 077	Red filter	1.2	1/2
GW 85 078	Green filter	1.2	1/2
GW 85 079	Yellow filter	1.2	1/2

GW88291



SPARE PARTS

Code	Description	Weight (Kg)	Pack Carton
GW 88 291	Glass	1.1	1

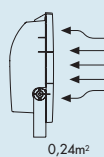
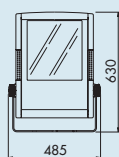
NEW

HORUS RANGE

THERMOPLASTIC FLOODLIGHTS

GEWISS

HORUS 3

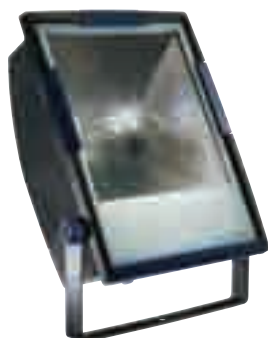


HORUS RANGE

SYMMETRICAL DIFFUSED OPTICS

WIRED VERSIONS WITH P.F. CORRECTION COMPLETE WITH LAMP - IP65 - CLASS II

GW85101S



Code	Lamp power	Lamp supplied	Lamp holder	Lamp current	Colour	Weight (Kg)	Pack Carton
VOLTAGE: 230 V - 50 Hz							
GW 85 101 S	250 W	ST	E40	3 A	Smoke grey	9.3	1
GW 85 101 M	250 W	MT	E40	3 A	Smoke grey	9.3	1
GW 85 102 M	250 W	MT*	E40	2.2 A	Smoke grey	8.9	1
GW 85 103 Q	250 W	QE	E40	2.2 A	Smoke grey	8.7	1
GW 85 104 S	400 W	ST	E40	4.2 A	Smoke grey	10.7	1
GW 85 104 M	400 W	MT	E40	4.2 A	Smoke grey	10.7	1
GW 85 105 M	400 W	MT*	E40	3.4 A	Smoke grey	10.3	1
VOLTAGE: 240 V - 50 Hz							
GW 85 111 S	250 W	ST	E40	3 A	Smoke grey	9.3	1
GW 85 111 M	250 W	MT	E40	3 A	Smoke grey	9.3	1
GW 85 112 M	250 W	MT*	E40	2.2 A	Smoke grey	8.9	1
GW 85 113 Q	250 W	QE	E40	2.2 A	Smoke grey	8.7	1
GW 85 114 S	400 W	ST	E40	4.2 A	Smoke grey	10.7	1
GW 85 114 M	400 W	MT	E40	4.2 A	Smoke grey	10.7	1
GW 85 115 M	400 W	MT*	E40	3.4 A	Smoke grey	10.3	1
VOLTAGE: 220 V - 60 Hz							
GW 85 121 S	250 W	ST	E40	3 A	Smoke grey	9.3	1
GW 85 121 M	250 W	MT	E40	3 A	Smoke grey	9.3	1
GW 85 122 M	250 W	MT*	E40	2.2 A	Smoke grey	8.9	1
GW 85 123 Q	250 W	QE	E40	2.2 A	Smoke grey	8.7	1
GW 85 124 S	400 W	ST	E40	4.2 A	Smoke grey	10.7	1
GW 85 124 M	400 W	MT	E40	4.2 A	Smoke grey	10.7	1
GW 85 125 M	400 W	MT*	E40	3.4 A	Smoke grey	10.3	1

* Lamp with 0,7 ÷ 1KV striking voltage.

NON-WIRED VERSION

GW85191



Code	Max. lamp power	Lamp type	Lamp holder	Lamp current	Colour	Weight (Kg)	Pack Carton
GW 85 191	400 W	-	E40		Smoke grey	6.2	1

ACCESSORIES SUPPLIED: structural components: reflector, accessory-holding plate. Electrical components: lampholder with cables, supply terminal. Devices are supplied with standard service items.

GW85109F



WIRED VERSIONS WITH P.F. CORRECTION COMPLETE WITH LAMP - IP65 - CLASS II - ELECTRONIC POWER SUPPLY



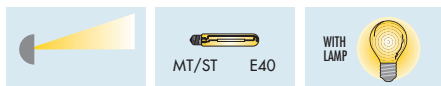
Code	Lamp power	Lamp supplied	Lamp holder	Lamp current	Colour temperature	Colour	Weight (Kg)	Pack Carton
VOLTAGE: 220 / 240 V - 50 / 60 Hz								
GW 85 109 F	120 W	FSQ	2G8	0.8 A	3000 K	Smoke grey	6.5	1
GW 85 110 F	120 W	FSQ	2G8	0.8 A	4000 K	Smoke grey	6.8	1

ASYMMETRICAL DIFFUSED OPTICS

GW85131S



WIRED VERSIONS WITH P.F. CORRECTION COMPLETE WITH LAMP - IP65 - CLASS II



Code	Lamp power	Lamp supplied	Lamp holder	Lamp current	Colour	Weight (Kg)	Pack Carton
VOLTAGE: 230 V - 50 Hz							
GW 85 131 S	250 W	ST	E40	3 A	Smoke grey	9.3	1
GW 85 131 M	250 W	MT	E40	3 A	Smoke grey	9.3	1
GW 85 132 M	250 W	MT*	E40	2.2 A	Smoke grey	8.9	1
GW 85 133 S	400 W	ST	E40	4.2 A	Smoke grey	10.7	1
GW 85 133 M	400 W	MT	E40	4.2 A	Smoke grey	10.7	1
GW 85 134 M	400 W	MT*	E40	3.4 A	Smoke grey	10.3	1
VOLTAGE: 240 V - 50 Hz							
GW 85 136 S	250 W	ST	E40	3 A	Smoke grey	9.3	1
GW 85 136 M	250 W	MT	E40	3 A	Smoke grey	9.3	1
GW 85 137 M	250 W	MT*	E40	2.2 A	Smoke grey	8.9	1
GW 85 138 S	400 W	ST	E40	4.2 A	Smoke grey	10.7	1
GW 85 138 M	400 W	MT	E40	4.2 A	Smoke grey	10.7	1
GW 85 139 M	400 W	MT*	E40	3.4 A	Smoke grey	10.3	1
VOLTAGE: 220 V - 60 Hz							
GW 85 141 S	250 W	ST	E40	3 A	Smoke grey	9.3	1
GW 85 141 M	250 W	MT	E40	3 A	Smoke grey	9.3	1
GW 85 142 M	250 W	MT*	E40	2.2 A	Smoke grey	8.9	1
GW 85 143 S	400 W	ST	E40	4.2 A	Smoke grey	10.7	1
GW 85 143 M	400 W	MT	E40	4.2 A	Smoke grey	10.7	1
GW 85 144 M	400 W	MT*	E40	3.4 A	Smoke grey	10.3	1

* Lamp with 0,7 ÷ 1KV striking voltage.

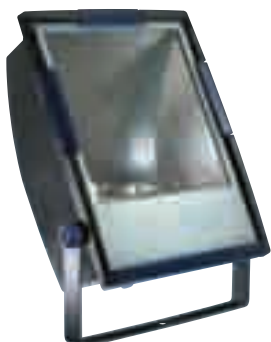
NON-WIRED VERSION



Code	Max. lamp power	Lamp type	Lamp holder	Lamp current	Colour	Weight (Kg)	Pack Carton
GW 85 192	400 W	-	E40		Smoke grey	6.2	1

ACCESSORIES SUPPLIED: structural components: reflector, accessory-holding plate. Electrical components: lampholder with cables, supply terminal. Devices are supplied with standard service items.

GW85192



NEW

HORUS RANGE

THERMOPLASTIC FLOODLIGHTS

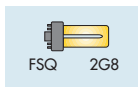
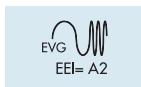
GEWISS

HORUS RANGE

GW85149F



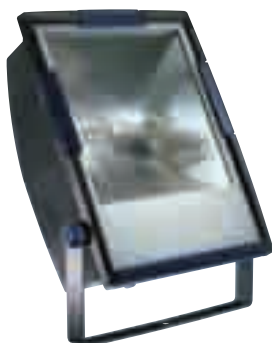
WIRED VERSIONS WITH P.F. CORRECTION COMPLETE WITH LAMP - IP65 - CLASS II - ELECTRONIC POWER SUPPLY



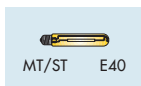
Code	Lamp power	Lamp supplied	Lamp holder	Lamp current	Colour temperature	Colour	Weight (Kg)	Pack Carton
VOLTAGE: 220 / 240 V - 50 / 60 Hz								
GW 85 149 F	120 W	FSQ	2G8	0.8 A	3000 K	Smoke grey	6.5	1
GW 85 150 F	120 W	FSQ	2G8	0.8 A	4000 K	Smoke grey	6.5	1

SYMMETRICAL RESTRICTED BEAM OPTICS

GW85201S



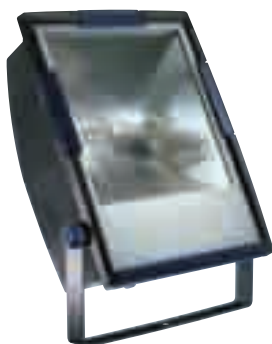
WIRED VERSIONS WITH P.F. CORRECTION COMPLETE WITH LAMP - IP65 - CLASS II



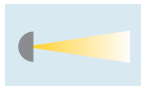
Code	Lamp power	Lamp supplied	Lamp holder	Lamp current	Colour	Weight (Kg)	Pack Carton	
VOLTAGE: 230 V - 50 Hz								
GW 85 201 S	250 W	ST	E40	3 A	Smoke grey	9.3	1	
GW 85 201 M	250 W	MT	E40	3 A	Smoke grey	9.3	1	
GW 85 202 M	250 W	MT*	E40	2.2 A	Smoke grey	8.9	1	
GW 85 203 S	400 W	ST	E40	4.2 A	Smoke grey	10.7	1	
GW 85 203 M	400 W	MT	E40	4.2 A	Smoke grey	10.7	1	
GW 85 204 M	400 W	MT*	E40	3.4 A	Smoke grey	10.3	1	
VOLTAGE: 240 V - 50 Hz								
GW 85 206 S	250 W	ST	E40	3 A	Smoke grey	9.3	1	
GW 85 206 M	250 W	MT	E40	3 A	Smoke grey	9.3	1	
GW 85 207 M	250 W	MT*	E40	2.2 A	Smoke grey	8.9	1	
GW 85 208 S	400 W	ST	E40	4.2 A	Smoke grey	10.7	1	
GW 85 208 M	400 W	MT	E40	4.2 A	Smoke grey	10.7	1	
GW 85 209 M	400 W	MT*	E40	3.4 A	Smoke grey	10.3	1	
VOLTAGE: 220 V - 60 Hz								
GW 85 211 S	250 W	ST	E40	3 A	Smoke grey	9.3	1	
GW 85 211 M	250 W	MT	E40	3 A	Smoke grey	9.3	1	
GW 85 212 M	250 W	MT*	E40	2.2 A	Smoke grey	8.9	1	
GW 85 213 S	400 W	ST	E40	4.2 A	Smoke grey	10.7	1	
GW 85 213 M	400 W	MT	E40	4.2 A	Smoke grey	10.7	1	
GW 85 214 M	400 W	MT*	E40	3.4 A	Smoke grey	10.3	1	

* Lamp with 0,7 ÷ 1KV striking voltage.

GW85291



NON-WIRED VERSION



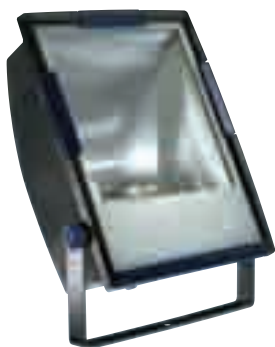
Code	Max. lamp power	Lamp type	Lamp holder	Lamp current	Colour	Weight (Kg)	Pack Carton
GW 85 291	400 W	-	E40		Smoke grey	6.2	1

ACCESSORIES SUPPLIED: structural components: reflector, accessory-holding plate. Electrical components: lampholder with cables, supply terminal. Devices are supplied with standard service items.

NEW

ASYMMETRICAL RESTRICTED BEAM OPTICS

GW85221S



WIRED VERSIONS WITH P.F. CORRECTION COMPLETE WITH LAMP - IP65 - CLASS II



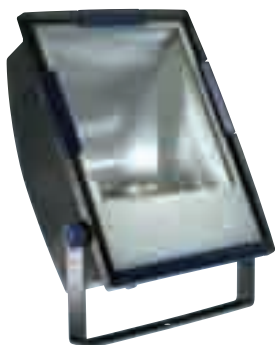
Code	Lamp power	Lamp supplied	Lamp holder	Lamp current	Colour	Weight (Kg)	Pack Carton
VOLTAGE: 230 V - 50 Hz							
GW 85 221 S	250 W	ST	E40	3 A	Smoke grey	9.3	1
GW 85 221 M	250 W	MT	E40	3 A	Smoke grey	9.3	1
GW 85 222 M	250 W	MT*	E40	2.2 A	Smoke grey	8.9	1
GW 85 223 S	400 W	ST	E40	4.2 A	Smoke grey	10.7	1
GW 85 223 M	400 W	MT	E40	4.2 A	Smoke grey	10.7	1
GW 85 224 M	400 W	MT*	E40	3.4 A	Smoke grey	10.3	1
VOLTAGE: 240 V - 50 Hz							
GW 85 226 S	250 W	ST	E40	3 A	Smoke grey	9.3	1
GW 85 226 M	250 W	MT	E40	3 A	Smoke grey	9.3	1
GW 85 227 M	250 W	MT*	E40	2.2 A	Smoke grey	8.9	1
GW 85 228 S	400 W	ST	E40	4.2 A	Smoke grey	10.7	1
GW 85 228 M	400 W	MT	E40	4.2 A	Smoke grey	10.7	1
GW 85 229 M	400 W	MT*	E40	3.4 A	Smoke grey	10.3	1
VOLTAGE: 220 V - 60 Hz							
GW 85 231 S	250 W	ST	E40	3 A	Smoke grey	9.3	1
GW 85 231 M	250 W	MT	E40	3 A	Smoke grey	9.3	1
GW 85 232 M	250 W	MT*	E40	2.2 A	Smoke grey	8.9	1
GW 85 233 S	400 W	ST	E40	4.2 A	Smoke grey	10.7	1
GW 85 233 M	400 W	MT	E40	4.2 A	Smoke grey	10.7	1
GW 85 234 M	400 W	MT*	E40	3.4 A	Smoke grey	10.3	1

* Lamp with 0,7 ÷ 1KV striking voltage.

NON-WIRED VERSION



GW85292



Code	Max. lamp power	Lamp type	Lamp holder	Lamp current	Colour	Weight (Kg)	Pack Carton
GW 85 292	400 W	-	E40		Smoke grey	6.2	1

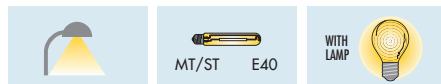
ACCESSORIES SUPPLIED: structural components: reflector, accessory-holding plate. Electrical components: lampholder with cables, supply terminal. Devices are supplied with standard service items.

STREET OPTICS

GW85241S



WIRED VERSIONS WITH P.F. CORRECTION COMPLETE WITH LAMP - IP65 - CLASS II



Code	Lamp power	Lamp supplied	Lamp holder	Lamp current	Colour	Weight (Kg)	Pack Carton
VOLTAGE: 230 V - 50 Hz							
GW 85 241 S	150 W	ST	E40	1.8 A	Smoke grey	8.5	1
GW 85 242 S	250 W	ST	E40	3 A	Smoke grey	9.4	1
GW 85 242 M	250 W	MT	E40	3 A	Smoke grey	9.4	1
VOLTAGE: 240 V - 50 Hz							
GW 85 246 S	150 W	ST	E40	1.8 A	Smoke grey	8.5	1
GW 85 247 S	250 W	ST	E40	3 A	Smoke grey	9.4	1
GW 85 247 M	250 W	MT	E40	3 A	Smoke grey	9.4	1
VOLTAGE: 220 V - 60 Hz							
GW 85 251 S	150 W	ST	E40	1.8 A	Smoke grey	8.5	1
GW 85 252 S	250 W	ST	E40	3 A	Smoke grey	9.4	1
GW 85 252 M	250 W	MT	E40	3 A	Smoke grey	9.4	1

GW85293



NON-WIRED VERSION



Code	Max. lamp power	Lamp type	Lamp holder	Lamp current	Colour	Weight (Kg)	Pack Carton
GW 85 293	250 W	-	E40		Smoke grey	6.3	1

ACCESSORIES SUPPLIED: structural components: reflector, accessory-holding plate. Electrical components: lampholder with cables, supply terminal. Devices are supplied with standard service items.

COMPLEMENTARY ITEMS



COMPLEMENTARY ITEMS FOR INSTALLATION

Code	Description	Weight (Kg)	Pack Carton
GW 85 181	Anti-glare louvre	1.8	1/5
GW 85 182	Protective wire guard	1.4	1/4
GW 85 184	Visor	1.5	1/2
GW 85 185	Diffused glass	2	1/2

GW88293



SPARE PARTS

Code	Description	Weight (Kg)	Pack Carton
GW 88 293	Symm./Asymm. optic glass	2	1
GW 88 294	Road ligh. optic glass	2	1