

# Accessories

**Connectors and couplings**

**CEE connections**

**Travel plugs**

**Installation requirements**

**Fittings**

**Incidentals, insulating tape,  
child safety**

**Ready-made cables**



# Plug



## Plug with earthing contact and switch

- angle plug with integrated pull relief
- reconnectable
- according to DIN 49441
- technical features: 16 A / 250 V~, 3500 Watt
- dimensions (WxHxD): 50 x 75 x 65 mm

▶ **safety plug with 2 poles switch**

▶ **2 poles with safety contact**

## Plug with earthing contact and switch

item number	description	EAN	UP
00111	electro white	4 006341 001115	10
001111	electro white, SSP	4 006341 607041	10



## Heat appliance socket

- reconnectable
- technical features: 16 A, 250 V~, 3500 Watt
- dimensions (WxHxD): 30 x 90 x 28 mm

▶ **155°C, in according to DIN VDE 0625**

▶ **2 poles with safety contact**

## Heat appliance socket

item number	description	EAN	UP
00138	black	4 006341 001382	25



## Plug with earthing contact

- reconnectable
- easy to install
- technical features: 16 A, 250 V~, 3500 Watt
- dimensions (WxHxD): 35 x 60 x 38 mm

▶ **central plug with integrated pull relief**

▶ **2 poles with safety contact**

## Plug with earthing contact

item number	description	EAN	UP
00100	white	4 006341 001009	25
00101	white, 2 pieces, SSP	4 006341 001016	10
00102	with clip, brown	4 006341 001023	50
00103	black	4 006341 001030	25

# Plugs and couplings



## Angle plug with earthing contact


- reconnectable
- according to DIN 49441
- technical features: 16 A, 250 V~, 3500 Watt
- dimensions (WxHxD): 40 x 60 x 38 mm

▶ **angle plug with integrated pull relief**

▶ **2 poles with safety contact**



## Angle plug with earthing contact

item number	description	EAN	UP
00110	white	 4 006341 001108	25



## Couplings with earthing contact



- reconnectable
- easy to install
- according to DIN 49441
- technical features: 16 A, 250 V~, 3500 Watt
- dimensions (ØxH): 40 x 70 mm

▶ **central coupling with integrated cord grip**

▶ **2 poles with safety contact**



## Couplings with earthing contact

item number	description	EAN	UP
00120	white	 4 006341 001207	20
00121	white, SSP	 4 006341 001214	10
00122	black	 4 006341 001221	20
00123	black, SSP	 4 006341 001238	10



# Plugs and couplings



## Rubber plug

- reconnectable
- simple installation and disassembly of the contact supports
- big connection room
- solid version
- slim design
- suitable for "rough operation conditions"
- according to DIN 49441-2
- technical features: 16 A, 250 V~, 3500 Watt
- dimensions (ØxH): 40 x 100 mm

- ▶ **water proof IP44**
- ▶ **big connection room**
- ▶ **central plug with integrated pull relief**
- ▶ **2 poles with safety contact**
- ▶ **easy to install**



## Rubber plug

item number	description	EAN	UP
00140	light grey	4 006341 001405	10
00147	black	4 006341 001474	10



## Rubber coupling

- pull-relief lying inside
- elements of cord fastener easy to serve (opened screws)
- all contact screws can be operated from one side
- suitable for "rough operation conditions"
- according to DIN 49440
- technical features: 16 A, 250 V~, 3500 Watt
- dimensions (HxØ): 55 x 110 mm

- ▶ **water proof IP44**
- ▶ **big connection room**
- ▶ **reconnectable**
- ▶ **central plug with integrated pull relief**
- ▶ **2 poles with safety contact**
- ▶ **easy to install**



## Rubber coupling

item number	description	EAN	UP
00144	light grey	4 006341 001443	10
00151	black	4 006341 001511	10

# Plugs and couplings



## Rubber coupling with cover

- pull-relief lying inside
- elements of cord fastener easy to serve (opened screws)
- all contact screws can be operated from one side
- with cover
- suitable for "rough operation conditions"
- according to DIN 49440-3
- technical features: 16 A, 250 V~, 3500 Watt
- dimensions (ØxH): 60 x 110 mm

- ▶ **water proof IP44**
- ▶ **big connection room**
- ▶ **reconnectable**
- ▶ **2 poles with safety contact**
- ▶ **easy to install**

## Rubber coupling with cover

item number	description	EAN	UP
00155	black	4 006341 001559	5



## 3 way rubber coupling for construction site

- pull-relief lying inside
- elements of cord fastener easy to serve (opened screws)
- all contact screws can be operated from one side
- with hinged cover
- suitable for "rough operation conditions"
- according to DIN 49440-3
- technical features: 16 A, 250 V~, 3500 Watt
- dimensions (ØxH): 60 x 110 mm

- ▶ **water proof IP44**
- ▶ **big connection room**
- ▶ **reconnectable**
- ▶ **2 poles with safety contact**
- ▶ **easy to install**

## 3 way rubber coupling for construction site

item number	description	EAN	UP
00152	black	4 006341 645760	5



## CEE plug, 3 poles

- according to EN60309
- screw connection
- fast installation
- technical features: 230 V~, 16 A, 3 poles
- dimensions (ØxH): 50 x 125 mm

- ▶ **reconnectable**
- ▶ **water proof IP44**

## CEE plug, 3 poles

item number	description	EAN	UP
00127	16 A, 3 poles	4 006341 001276	10



# CEE plugs and couplings



## CEE-plug, 5 poles

- according to EN60309
- screw connection
- fast installation
- technical features: 400 V~, 16 A or 32 A, 5 poles
- dimensions (ØxH): 65 x 130 mm

- ▶ **reconnectable**
- ▶ **water proof IP44**

## CEE-plug, 5 poles

item number	description	EAN	UP
00130	16 A, 5 poles	4 006341 001306	10
00171	32 A, 5 poles	4 006341 001719	10



## CEE-coupling, 3 poles

- according to EN60309
- screw connection
- fast installation
- technical features: 230 V~, 16 A, 3 poles
- dimensions (WxHxD): 50 x 130 x 75 mm

- ▶ **reconnectable**
- ▶ **water proof IP44**
- ▶ **with self-closing snap lid**

## CEE-coupling, 3 poles

item number	description	EAN	UP
00128	16 A, 3 poles	4 006341 001283	5



## CEE-coupling, 5 poles

- according to EN60309
- screw connection
- fast installation
- technical features: 400 V~, 16 A or 32 A, 5 poles
- dimensions (WxHxD): 65 x 140 x 90 mm

- ▶ **reconnectable**
- ▶ **water proof IP44**
- ▶ **with self-closing snap lid**

## CEE-coupling, 5 poles

item number	description	EAN	UP
00131	16 A, 5 poles	4 006341 001313	10
00172	32 A, 5 poles	4 006341 001726	10



## CEE-wall socket, 3 poles

- according to EN60309
- screw connection
- technical features: 230 V~, 16 A, 3 poles
- dimensions (WxHxD): 85 x 90 x 135 mm

- ▶ **reconnectable**
- ▶ **water proof IP44**
- ▶ **with self-closing snap lid**

## CEE-wall socket, 3 poles

item number	description	EAN	UP
00129	16 A, 3 poles	4 006341 001290	10

# CEE plugs and couplings



## CEE-wall socket, 5 poles

- according to EN60309
- screw connection
- technical features: 400 V~, 16 A or 32 A, 5 poles
- dimensions (WxHxD): 85 x 95 x 135 mm

- ▶ **reconnectable**
- ▶ **water proof IP44**
- ▶ **with self-closing snap lid**



## CEE-wall socket, 5 poles

item number	description	EAN	UP
00132	16 A, 5 poles	4 006341 001320	10
00173	32 A, 5 poles	4 006341 001733	10



## CEE-phase changer 5 poles

- according to EN60309
- screw connection
- fast installation
- technical features: 400 V~, 16 A or 32 A, 5 poles
- dimensions (ØxH): 70 x 155 mm

- ▶ **reconnectable**
- ▶ **water proof IP44**



## CEE-phase changer 5 poles

item number	description	EAN	UP
00133	16 A, 5 poles	4 006341 604996	10
00174	32 A, 5 poles	4 006341 605009	10



## CEE, socket 5 + 3 poles

- according to EN60309
- screw connection
- fast installation
- technical features: 230 V~, 16 A, 3 poles
- technical features: 400 V~, 16 A, 5 poles
- dimensions (WxHxD): 80 x 140 x 170 mm

- ▶ **reconnectable**
- ▶ **water proof IP44**
- ▶ **with self-closing snap lid**
- ▶ **double access for CEE and safety socket**



## CEE, socket 5 + 3 poles

item number	description	EAN	UP
00134	CEE combi wall socket	4 006341 674111	10



# Travel adapter



## Travel plug set

- safety socket with integrated children protection
- electric strength: 250 V~, 10 A, 2300 Watt (take care of the national regulations)
- max. load of plug inset imprinted
- country-specific plug systems
- printing with countries
- additional differentiation by different colours
- suitable for the countries: GB, HK, EAK, IRL, MAL, CY, M, SGP, UAE, F, B, CZ, PL, CH, I, USA, J, C, MEX, CDN, T, AUS, NZ, ZA

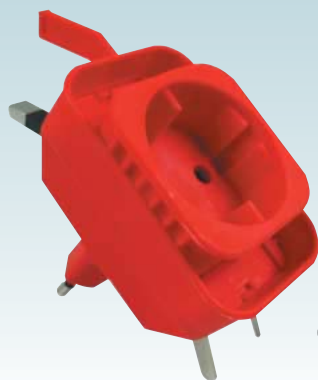
▶ **with overload protection**

▶ **7 travel plugs for more than 150 countries, worldwide**

▶ **easy and safe to use**

## Travel plug set

item number	description	EAN	UP
003355	set of travel adapters	4 006341 676108	5



## Adapter plug for travel

- 230 V~, 7,5 A
- for euro and universal plug
- compact measurements, fits for each pocket
- dimensions (WxHxD): 108 x 46 x 80 mm

▶ **always sure connection – wherever you travel – for your electrical devices**

▶ **2 poles**

## Adapter plug for travel

item number	description	EAN	UP
0033541	universal travel plug, SSP	4 006341 607416	5



## Travel plug adapter

- single traveller plug
- for euro plug
- countries list see Internet (every article)
- set of travel plugs:
  - 1 x America adapter
  - 1 x adapter for South Europe
  - 1 x plug for long-haul journey
- America adapter = parallel flat pins
- south europe-adaptor = round pins 4 mm Ø
- long-haul journey adapter = round pins 5 mm Ø
- compact measurements, fits for each pocket
- dimensions (ØxH): 42 x 55 mm

▶ **always sure connection – wherever you travel – for your electrical devices**

▶ **2 poles**

## Travel plug adapter

item number	description	EAN	UP
0033501	plug set for travel - SSP	4 006341 335012	5
003351	America adapter, white	4 006341 033512	25
003352	adapter Southern Europe, white	4 006341 033529	25
0033521	adapter Southern Europe, white - SB	4 006341 607270	10
003353	long-haul journey adapter, white	4 006341 033536	25

# Childprotection



## Child protection - SSP

- dimensions (ØxH): 40 x 18mm

▶ **for higher protection against contact in safety socket**

▶ **pluggable**

## Child protection - SSP

item number	description	EAN	UP
00170	push in version - SSP	4 006341 001702	5



## Child protection with turning mechanism

- attention: reduces the standard distance of the sockets
- take care of a sure contact during operation
- dimensions (Ø): 38 mm

▶ **for increased touch protection in safety sockets**

▶ **with turning mechanism self-adhesive**

## Child protection with turning mechanism

item number	description	EAN	UP
00179	3 pieces, white - SSP	4 006341 001795	10
00179101W	10 pieces, white - SSP	4 006341 653505	10



## Differential residual current circuit breaker, IP44

- with child protection
- rating residual current: 30 mA
- releasing time: < 30 ms
- selfclosing covers
- control light signals the operating state
- technical features: 16 A, 230 V~, 3500 Watt
- dimensions (WxHxD): 60 x 130 x 83 mm

▶ **DI protection adapter - stopping residual current**

▶ **obligat for all external devices and tools**

▶ **operation till -25° C**

▶ **advised for all hand-used devices/tools**

▶ **water proof IP44**

## Differential residual current circuit breaker, IP44

item number	description	EAN	UP
001273	DI protection adapter	4 006341 665546	6

# Installation material



## Switch/branch box

- insulation material
- socket-/ junction box for external, tubing, and twin leads

► **switch box with connection piece**

► **usable as individual socket too**

## Switch/branch box

item number	description	EAN	UP
003314	switch box, 55 mm Ø	4 006341 033147	50
00331499	switch box 55 mm professional, 25 pcs/bag	4 006341 676535	1
003315	junction box, 70 mm Ø	4 006341 033154	50
00331599	junction box 70 mm professional, 10 pcs/bag	4 006341 676542	1
003316	switch box, deep	4 006341 653000	100
003319	spring cover for 70 mm Ø	4 006341 033192	20
00161	cavity wall box, 55 mm Ø	4 006341 001610	50
00160	cavity wall box, 2 x 55 mm Ø	4 006341 605030	20



## Wet rooms - cable connexion box, IP54

- material: flame- retardant plastic, pale grey
- surface installation

► **for cable from 7 - 13 mm Ø**

## Wet rooms - cable connexion box, IP54

item number	description	EAN	UP
003323	dim. 85 x 85 x 40 mm	4 006341 033239	30
003322	dim. 100 x 100 x 40 mm	4 006341 653017	50

## Junction trimming

- to change light positions
- dimensions (Ø): 70 mm and 30 mm

► **screw included in delivery**

► **with cord fastener**



## Junction trimming

item number	description	EAN	UP
00163	branch baldachin, white, SSP	4 006341 001634	10



## Branch canopy / ceiling canopy, plastic

► accessories included: screw, screw screen, cord grip

### Branch canopy / ceiling canopy, plastic

item number	description	EAN	UP
0033131	Branch baldachin, white - SSP Ø 70 mm/23 mm	4 006341 607317	10
003252117104	Branch baldachin, black Ø 70 mm/23 mm	4 006341 656735	10
003261118104	ceiling canopy, brass	4 006341 656810	4
003261110104	ceiling canopy, white	4 006341 656780	15
003261113104	ceiling canopy, brown	4 006341 656797	10
003261117104	ceiling canopy, black	4 006341 656803	10



## Terminal strips

► 12 poles, can be cut off

### Terminal strips

item number	description	EAN	UP
003310	Terminal strip - 6 mm <sup>2</sup>	4 006341 033109	50
0033101	Terminal strip - 6 mm <sup>2</sup> , 2p., SSP	4 006341 607164	10
003301	Terminal strip 2,5 mm <sup>2</sup>	4 006341 033017	50
0033011	Terminal strip 2,5mm <sup>2</sup> , 2p., SSP	4 006341 330116	10
003302	Terminal strip 4 mm <sup>2</sup>	4 006341 033024	100
0033021W	Terminal strip 4 mm <sup>2</sup> , 2p., SSP	4 006341 653536	10
0033061W	Terminal strip Wago, 5 poles, 5p., SSP	4 006341 653543	10
00330299	Terminal strip 4 mm <sup>2</sup> , 10 pieces	4 006341 676504	5
00331099	Terminal strip 6 mm <sup>2</sup> , 10 pieces	4 006341 676528	5





## Core cable ends

### Core cable ends

item number	description	EAN	UP
<b>0033890901</b>	0,75 mm <sup>2</sup> , white 100 pieces	4 006341 679086	6
<b>0033891961</b>	1,0 mm <sup>2</sup> , red 100 pieces	4 006341 679093	6
<b>0033892911</b>	1,5 mm <sup>2</sup> , black 100 pieces	4 006341 679109	6
<b>0033893941</b>	2,5 mm <sup>2</sup> , blue 100 pieces	4 006341 679116	6
<b>0033894099</b>	box 0,5 - 2,5 mm, 400 pieces	4 006341 676429	6
<b>0033895099</b>	display box 4 - 16 mm <sup>2</sup> , 100 pieces	4 006341 679130	6
<b>0033899199</b>	0,5 - 6,0 mm <sup>2</sup>	4 006341 679147	1
<b>0033889161</b>	6 mm <sup>2</sup> and 10 mm <sup>2</sup> silver each 2 pieces	4 006341 679154	6
<b>0033896161</b>	2,8 mm, plug + coupling each 10 pieces	4 006341 679161	6
<b>0033897161</b>	4,8 mm, plug + coupling each 10 pieces	4 006341 679178	6
<b>0033898161</b>	6,3 mm, plug + coupling each 10 pieces	4 006341 679185	6
<b>0033844951</b>	18 mm, 100 pieces	4 006341 679192	6
<b>0033845951</b>	50 mm 100 pieces	4 006341 679208	4



# Fittings



## Fittings - standard packaging

- isolated-fittings 2 A (E14) / 4 A (E27)
- technical features: 250 V~, 2/4 A

▶ **inserted nuts M10 x 1**

## Fittings - standard packaging

item number	description	EAN	UP
003342	E27, smooth sheath, black	4 006341 033420	25
003340	E27, outer thread, black	4 006341 033406	25
003341	E27, ring, black	4 006341 033413	25
0033412711W	E27, outer thread, black	4 006341 653635	5
003343	E14, smooth sheath, black	4 006341 033437	25
003344	E14, outer thread, black	4 006341 033444	50
0033441W	E14, outer thread, black - SSP	4 006341 653659	10
003345	E14, ring, black	4 006341 033451	50



## Angle lamp-holders

- metal fixation angle A (E14) / 4 A (E27)
- technical features: 250 V~, 2 / 4 A

▶ **plastic material black**

## Angle lamp-holders

item number	description	EAN	UP
00405	E14, 2 A, black	4 006341 004055	25
004051W	E14, 2 A, black - SSP	4 006341 653673	5
00406	E27, 4 A, black	4 006341 004062	25
004061W	E27, 4 A, black - SSP	4 006341 653666	5



## Renovate lamp-holder

- plastic lamp-holder E27
- with connection cable and hanging appliance
- technical features: 250 V~ / 4 A

▶ **ready for connection**

## Renovate lamp-holder

item number	description	EAN	UP
0032195171	E27, 3 pieces, black	4 006341 666420	20

# Incidentals, Insulation tape, Child protection



## Fittings E27

- with faceplate ring
- material: brass
- technical features: 250 V~/ 4 A
- dimensions (ØxH): 60 x 60 mm

▶ threaded M10 x 1

▶ metal socket with outer thread

## Fittings E27

item number	description	EAN	UP
00407	E27 with ring	4 006341 004079	20



## Insulation tape



item number	description	EAN	UP
00180991	3,3 m, 0,15 x 15 mm coloured assorted 10 pieces	4 006341 653598	10
00190	4,5 m, 0,15 x 15 mm, black	4 006341 001900	20
00180201W	10 m, 0,15 x 15 mm, black, 2 pieces, SSP	4 006341 653581	10
00180231W	10 m, 0,15 x 15 mm, black/red, 2 pieces, SSP	4 006341 653567	10
00183	10 m, 0,15 x 15 mm, red	4 006341 001832	20
00184	10 m, 0,15 x 15 mm, green/yellow	4 006341 001849	20
0033881111	10 m 0,15 x 15mm, black	4 006341 678942	20
0033881101	10 m 0,15 x 15mm, white	4 006341 678959	20
0033881141	10 m 0,15 x 15mm, blue	4 006341 678966	20
0033881165	10 m - 0,15 x 15 mm, brown	4 006341 678973	20

# Incidentals, Insulation tape, Child protection



## Insulation tape

item number	description	EAN	UP
0033881177	10 m - 0,15x15 mm, yellow/green	4 006341 678980	20
0033881151	10 m - 0,15x15 mm, grey	4 006341 678997	20
0033882111	10 m - 0,15x25 mm, black	4 006341 679000	12
0033882101	10 m - 0,15x25 mm, white	4 006341 679017	12
003388319	10 m - 0,15x15 mm, 4 colours	4 006341 679024	2



## Self-welding tape

item number	description	EAN	UP
0033885111	9 m - 0,5x25 mm, black	4 006341 679031	6



## Heat shrink tube

item number	description	EAN	UP
0033886111	10 m - 4 sizes, 5 pieces, black	4 006341 679048	4
0033880299	10 m - 4 sizes, 5 pieces, coloured	4 006341 679055	4
0033887111	10 m - 3 sizes, 5 pieces, schwarz	4 006341 679062	4
0033879299	10 m - 3 sizes, 5 pieces, coloured	4 006341 679079	4



## Starter for phosphor lamps

► for fluorescent tubes of 4 - 65 Watt

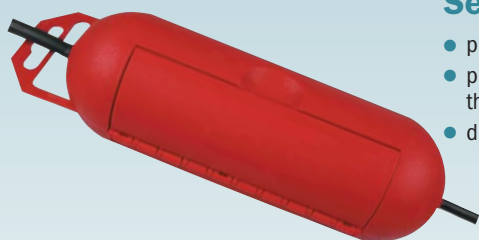
► technical features: 220 - 240 V~

## Starter for phosphor lamps

item number	description	EAN	UP
0033841	2 pieces - SSP	4 006341 607171	10



# Incidentals, Insulation tape, Child protection



## Security box IP44

- protection against humidity
- protection against current interruption through cord fastener
- dimensions (ØxW): 70 x 230 mm

▶ **for the security of cable plug-in connectors**

▶ **for cable sections of 6 - 9 mm**



## Security box IP44

item number	description	EAN	UP
0033741	Security box IP44 - SSP	4 006341 652096	10



## Cord switches

- technical features: 250 V~, 1 pole
- dimensions (WxHxD): 27 x 65 x 25 mm

▶ **single-throw switch**

▶ **rocker switch 2 A / 10 A**



## Cord switches

item number	description	EAN	UP
003311	white, 2 A	4 006341 033116	50
0033111W	white, 2A - SB	4 006341 653680	10
003360	black, 2 A	4 006341 033604	50
0033601W	black, 2 A - SB	4 006341 653697	10
003361	brown, 2 A	4 006341 033611	50
0033611	brown, 2 A - SB	4 006341 607355	10



# Incidentals, Insulation tape, Child protection



## Pedal switch

- technical features: 250 V~, 1 pole
- dimensions (WxHxD): 50 x 68 x 30 mm

► **ON/OFF switch**

► **pressing switch 1 A**

## Pedal switch

item number	description	EAN	UP
003312	white, 1 A	4 006341 033123	50
0033121	white, 1 A - SB	4 006341 607003	10
003365	brown, 1 A	4 006341 033659	50
003366	gold, 1 A	4 006341 033666	50



## Flush push-and pull switch

- 8 mm screw thread base
- technical features: 250 V~, 1 pole
- dimensions (WxHxD): 25 x 33,5 x 15 mm

► **ON/OFF switch**

► **bell-shaped screw nut and button white**

## Flush push-and pull switch

item number	description	EAN	UP
003320	built-in pressure switch, white	4 006341 033208	100
0033211	pressure switch with cord - SSP	4 006341 607034	10



## Lamp installation accessories

- 80 cm cable white
- lighting installation accessory
- E27 lamp-holder with threaded ring
- dimensions of the canopy: (ØxH): 64 x 69 mm
- dimensions of the fitting: (ØxH): 58 x 59 mm

## Lamp installation accessories

item number	description	EAN	UP
0033491	lamp cord, white - SSP	4 006341 607188	10



# Incidentals, Insulation tape, Child protection



## Cable ties

- material: polyamide 6.6
- temperature range: -35° C up to +85°C

## Cable ties, Cover for cable organising and protection, cable clip, Fastening element, Hook and loop cable ties



Cover for cable organising and protection

cable clip

Fastening element



Hook and loop cable ties

item number	description	EAN	UP
0033861900	100x2,5 mm transparent 100pcs	4 006341 678744	12
0033861911	100x2,5 mm black 100pcs	4 006341 678812	12
0033821011W	150x3, 6 mm white 25 pieces - SSP	4 006341 653970	10
0033821711W	150x3, 6 mm black 25 pieces - SSP	4 006341 653956	10
0033862900	160x2,5 mm transparent 100pcs - SSP	4 006341 678751	12
0033862911	160x2,5 mm black 100pcs - SSP	4 006341 678829	12
0033863900	200x4,8 mm transparent 100pcs - SSP	4 006341 676375	12
0033863911	200x4,8 mm black 100pcs - SSP	4 006341 676382	12
0033822011W	300 mm white 25 pieces - SSP	4 006341 653987	10
0033822711W	300 mm black 25 pieces - SSP	4 006341 653963	10
0033864900	300 mm, transparent 100pcs	4 006341 676399	10
0033864911	300 mm, black 100pcs	4 006341 676405	10
0033865900	370x4,8 mm transparent 100pcs - SSP	4 006341 678782	10
0033865911	370x4,8 mm black 100pcs - SSP	4 006341 678850	10
0033866700	100/160/200 mm transparent 25 pieces	4 006341 678874	2
0033867711	100/160/200 mm black 25 pieces	4 006341 678881	2
0033872111	28 mm / 1,5 m black incl. Tools	4 006341 676719	6
0033873111	9 mm / 2 m black	4 006341 678911	2
0033875211	14x20 mm black 20 pieces - SSP	4 006341 678928	4
0033875201	14x20 mm white 20 pieces - SSP	4 006341 678935	4
0033869100	20x20 mm / 5 mm transparent 10 pieces	4 006341 678799	6
0033869900	20x20 mm / 5 mm transparent 50 pieces	4 006341 678805	10
0033870111	135x12 mm black 6 pieces	4 006341 676412	4

# Incidentals, Insulation tape, Child protection



## Fuse cartridges

- lead cut-out
- technical features: 500 V~

► **design Diazed, size D II**

► **5 pieces in a carton**

### Fuse cartridges

item number	description	EAN	UP
003317	10 A, 5 pieces	4 006341 033178	5
0033171	10 A, 5 pieces - SSP	4 006341 607331	5
003318	16 A, 5 pieces	4 006341 033185	5
0033181	16 A, 5 pieces - SSP	4 006341 607324	5



## Iso cable-clips with nails

item number	description	EAN	UP
00033821201	4-7 mm 2x18 mm white, 20pcs	4 006341 678379	6
0033821501	4-7 mm 2x18 mm white, 50pcs	4 006341 678386	4
0033821901	4-7 mm 2x18 mm white, 100pcs	4 006341 678393	6
0033801251	4-7 mm 2x18 mm grey, 20pcs	4 006341 678317	6
0033801551	4-7 mm 2x18 mm grey, 50pcs	4 006341 678324	4
0033801	4-7 mm 2x30 mm grey, 50pcs - SSP	4 006341 607133	5
0033822201	4-7 mm 2x30 mm white, 20pcs	4 006341 678409	6
0033822501	4-7 mm 2x30 mm white, 50pcs	4 006341 678416	4
0033822901	4-7 mm 2x30 mm white, 100pcs	4 006341 678423	6
003381011W	7-11 mm 2x35 mm white, 50pcs - SSP	4 006341 653772	5
0033831201	7-11 mm 2x25 mm white, 26pcs	4 006341 678430	4
0033831901	7-11 mm 2x25 mm white, 1000pcs	4 006341 678447	4
0033811	7-11 mm 2x30 mm grey, 50pcs - SSP	4 006341 607140	5
0033831251	7-11 mm 2x25 mm grey, 25pcs	4 006341 678492	4



# Incidentals, Insulation tape, Child protection



## Iso Cable-clip, Rast-Druckschellen, Klemmfix-Steckschellen

item number	description	EAN	UP
0033831951	7-11 mm 2x25 mm grey 100pcs	4 006341 678508	4
0033831051	7-11 mm 2x25 mm grey 250pcs	4 006341 678515	2
0033832201	7-11 mm 2x35 mm white 25pcs	4 006341 678454	4
0033832901	7-11 mm 2x35 mm white 100pcs	4 006341 678461	4
0033832251	7-11 mm 2x35 mm grey 25pcs	4 006341 678522	4
0033832951	7-11 mm 2x35 mm grey 100pcs	4 006341 678539	4
0033832051	7-11 mm 2x35 mm grey 250pcs	4 006341 678546	2
0033833201	10-14 mm 2x30 mm white 25pcs	4 006341 678478	4
0033833251	10-14 mm 2x30 mm grey 25pcs	4 006341 678553	4
0033833551	10-14 mm 2x30 mm grey 50pcs	4 006341 678560	4
0033833051	10-14 mm 2x30 mm grey 150pcs	4 006341 678577	2
0033834201	10-14 mm 2x40 mm white 25pcs	4 006341 678485	4
0033834251	10-14 mm 2x40 mm grey 25pcs	4 006341 678584	4
0033834551	10-14 mm 2x40 mm grey 50pcs	4 006341 678591	4
0033834051	10-14 mm 2x40 mm grey 150pcs	4 006341 678607	2
0033802211	3x5 mm square 1,5x15 mm sw 25pcs	4 006341 678331	6
0033813201	3,8x5 mm square 1,7x14 mm white 25pcs	4 006341 678348	6
0033814201	4,7x7 mm square 1,9x16 mm white 25pcs	4 006341 678355	6
0033815201	5,4x9 mm square 2,1x20 mm white 25pcs	4 006341 678362	4
0033836151	6-16 mm grey 15pcs	4 006341 678614	2
0033836551	6-16 mm grey 50pcs	4 006341 678621	2
0033837151	7-12 mm / 6 mm, grey 15pcs	4 006341 678638	4
0033837251	7-12 mm / 6 mm, grey 25pcs	4 006341 678645	6


Snap clamp



Jam-fix tuck clamp




# Incidentals, Insulation tape, Child protection

### Hook nails, nail slices with nails

item number	description	EAN	UP
<b>Hook nail</b>			
<b>0033838291</b>	3x50 mm, electroplated 25 St.	4 006341 678652	4
<b>0033838991</b>	3x50 mm, electroplated 100 St.	4 006341 678669	4
<b>0033839291</b>	3x70 mm, electroplated 25 St.	4 006341 678676	4
<b>0033839991</b>	3x70 mm, electroplated 100 St.	4 006341 678683	4
<b>Nail slices with nails</b>			
<b>0033840200</b>	27x34 mm / 2x40 mm transparent 25pcs	4 006341 678690	2
<b>0033840900</b>	27x34 mm / 2x40 mm transparent 100pcs	4 006341 678706	2
<b>0033841900</b>	27x34 mm / 2x60 mm transparent 100pcs	4 006341 678713	2



### Voltage tester


- frequency: 50-500 Hz
- dimensions (HxØ): 140 x 15 mm

**can only be used in voltage range 220 - 250 V~**

**temperature range: -10 bis +50° C**

### Voltage tester

item number	description	EAN	UP
<b>0016</b>	bister packaging - SSP	4 006341 000163	40




### Microfuse assortment

- dull
- DIN 41.662
- EN 60127-2-3
- dimensions (ØxH): 5 x 20 mm

**contents: 1x0,5 A / 1x1 A / 2x1,25 A, 1x2 A / 2x2,5 A / 2x6,3 A / 1x10 A**

### Microfuse assortment

item number	description	EAN	UP
<b>00337511W</b>	10 pieces - SSP	4 006341 653918	10



### Power supply unit for all-purpose

- input voltage: 230 V~, 50 Hz, 12,5 Watt
- dimensions (WxHxD): 50 x 75 x 80 mm

**mains adapter suits for numerous devices**

**6 different adapter plugs**

**output voltage: 1,5 - 3 - 4,5 - 6 - 7,5 - 9 - 12 V, max. 500 mA**

### Power supply unit for all-purpose

item number	description	EAN	UP
<b>00337811W</b>	500 mA - SSP	4 006341 653925	5

# Incidentals, Insulation tape, Child protection



## Installation set

- 1x voltage tester, isolation tape 4,5 m, terminal strip 2,5 + 4 mm<sup>2</sup>
- blister packaging

### Installation set

item number	description	EAN	UP
0018711	SSP packaging		14



## Multitester

- ideal for laboratory, workshop and home use
- display 3,5 digits, 7 segmentations, cypher height 12 mm
- big rotary switch for section and function choice
- voltage supply: 1 x 9 volt block (included)
- dimensions (WxHxD): 70 x 125 x 30 mm

### power features:

▶ **direct voltage:**  
200 mV - 250 V ± 0,8%  
± 2 digit

▶ **AC voltage:**  
200/250 V ± 1,2%  
± 10 digit

▶ **direct current:**  
0,0002 - 2000 mA ± 1,2%  
± 2 digit

▶ **resistor:**  
200 Ohm - 2 MOhm ± 2%  
± 10 digit


### diodes test

### unacoustic continuity tester

### transistor test PNP/NPN



### Multitester

item number	description	EAN	UP
00337921W	digital multitester - SSP		5



## Hearth connection wires

- wire sleeves on both ends

▶ **cable H05VV-F 5G1,5 or 5G2,5 VDEHAR**

### Hearth connection wires

item number	description	EAN	UP
00123099	1,5 m, H05VV-F 5G1,5, white		10
00123100	1,5 m, H05VV-F 5G2,5, white		15
00123103	3,0 m, H05VV-F 5G2,5, white		10



# Manufactured cables



## Cables

### Cables

item number	description	EAN	UP
0011332	H03VH-H 2 x 0,75, white, 10 m	4 006341 652102	10
0011662	H05VV-F 3G1,0, white, 10 m	4 006341 607225	10
0011667	H05VV-F 3G1,0, black, 10 m	4 006341 652126	10
0011672	H05VV-F 3G1,5, white, 10 m	4 006341 607263	10
0011610	JR 2 x 0,8 mm <sup>2</sup> , coloured, 20 m	4 006341 607256	10



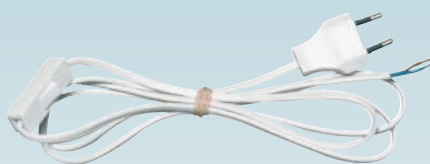
## Lead-in

- with connected plug
- technical features: 230 V~ / 16 A

▶ cable 3 m,  
H05VV-F 3G1,5 or  
H05RR-F 3G1,5

### Lead-in

item number	description	EAN	UP
00123601	3 m, white, H05VV-F 3G1,5	4 006341 656995	10
00123671	3 m, black H05RR-F 3G1,5	4 006341 656988	10



## Euro lead-in with switch

- 1pole switch
- technical features: 250 V~, 2,5 A

▶ cable 2 m,  
H03VVH2-F 2x0,75

## Euro supply line with switch

item number	description	EAN	UP
00128002	2 m, white	4 006341 657008	1
00128003	2 m, black	4 006341 657015	1

