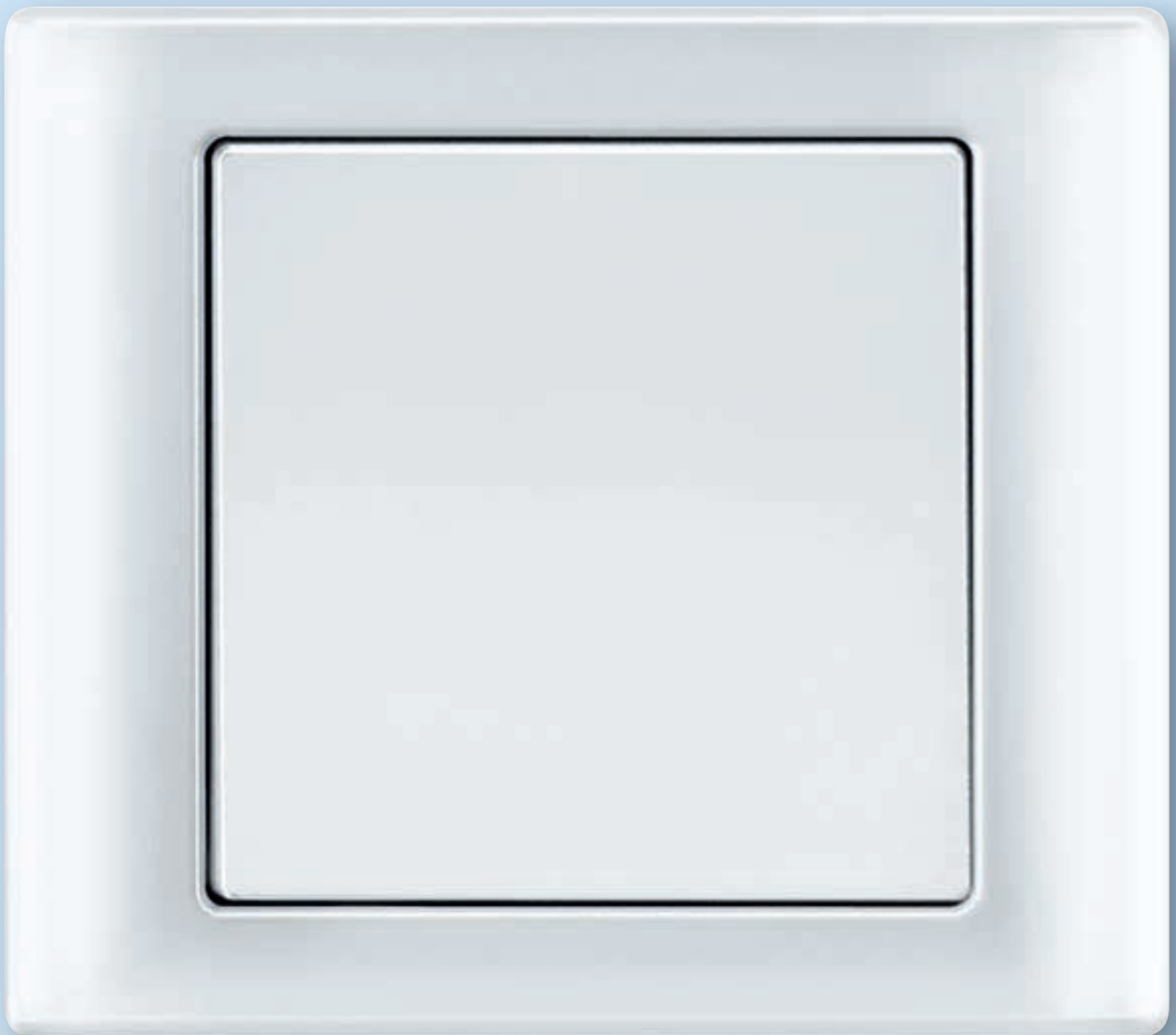


***merten***

**AQUADESIGN | SYSTEM M IP 44 | SYSTEM DESIGN IP 44 | AQUASTAR**

**WATER-TIGHT TECHNOLOGY AND DESIGN**



## SPLASH-PROOF PROTECTION IP 44 WATERTIGHT INGENUITY



If switches are exposed to damp, moisture, wind and rain - as in damp locations, workrooms, garages, basements, swimming pools or outdoor areas - then a special solution is called for: switches that meet the IP 44 standard.

Merten has a range of waterproof switch ranges available.



**AQUADESIGN:**  
The attractive and elegantly shaped series.



**System Design IP 44:**  
The waterproof version of the System Design switches ARTEC and ANTIK.



**System M IP 44:**  
The waterproof version of the multi-award-winning switch design M-SMART, M-PLAN and M-ARC.



**AQUASTAR:**  
For demanding applications where a flush-mounted solution is impossible or too complicated.

## AQUADESIGN

# WATERPROOF ON THE INSIDE, BEAUTIFUL ON THE OUTSIDE

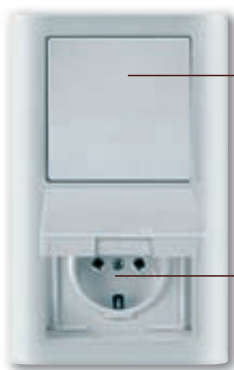


The AQUADESIGN range proves at first sight that functional can look good. Balanced proportions, a high-quality surface and an elegantly-shaped frame give the waterproof switch range an individual look.

AQUADESIGN is weather-resistant, scratch-proof, UV-stable and available for an impressive range of products covering numerous applications. This ranges from switch rockers and indoor movement detectors through to communication inserts and special adapters for use by System M components.

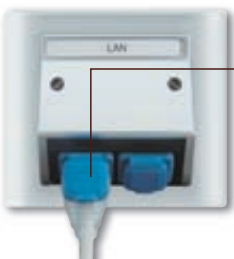
AQUADESIGN is typically used in: professional kitchens, laundries and outdoor areas such as terraces for example.

It has most recently received the “Good Design” distinction.



Watertight, scratch-proof and, thanks to its smooth thermo-plastic surface, easy to clean

Safe, above all for children: Increased protection against accidental contact in line with VDA 0620 (Part 1)



Watertight even when plugged in: AQUADESIGN with network connection insert

The bushing of both the standard snap-in version and the screw-in frame version is dowelled into the wall, which means AQUADESIGN provides increased protection against theft



Transparent hinged lid together with System M EIB push-buttons or displays



Special adapters ensure that: AQUADESIGN switches can also be used with all System M components. For example, this lockable telephone socket



## IP 44 FOR SYSTEM M & SYSTEM DESIGN CAN BE USED ANYWHERE

It doesn't matter whether you choose M-SMART, M-ARC, M-PLAN or ARTEC. If high-quality design is important to you, then the System M and System Design switch ranges remain unrivalled. This is particularly the case if you want a consistent switch design throughout the house. And this multi-award-winning switch range isn't just available for indoors. Outdoor switches are extremely waterproof in line with IP 44. Classic examples include the doorbell on the front door and the socket-outlet on the terrace.

System M and System Design rockers, rockers with opening for symbols as well as socket-outlets are all available in IP 44 variants.



A special gasket provides the necessary protection against water and the elements



System M, M-PLAN design, switches with IP 44 protection



System M, M-PLAN design, rocker with opening for symbols and IP 44 protection



System M, M-PLAN design, SCHUKO® socket-outlet insert with snap-in hinged lid and IP 44 protection



System Design, ARTEC design, switches with IP 44 protection



System Design, ARTEC design, rocker with opening for symbols and IP 44 protection



System Design, ARTEC design, SCHUKO® socket-outlet insert with snap-in hinged lid and IP 44 protection



**AFRAID OF  
THE WATER?  
ANYTHING BUT!**

# AQUASTAR WITHSTANDS WIND AND RAIN



If electrical installations are exposed to moisture, splashing water or mechanical stresses and a flush-mounted solution is either impossible or too complicated, then you need AQUASTAR.

The break-proof plastic housing of this Merten surface-mounted range meets the IP 44 standard, retains its protective function even in cold weather and is designed for the tough wear-and-tear of everyday use. After all, this has always been the consistent focus of its ongoing technical development. It is typically used in: garages, basements, laundries and terraces.



Actual size



Robust: the break-proof insulating thermoplastic housing

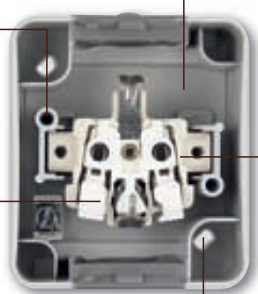
No distortion or deformation: The rear of all switches and sockets are fitted with spacers for uneven walls



Can be illuminated and labelled for the clear allocation of functions and areas of application: Transparent field on switches, push-buttons and socket-outlet includes a grey paper label with white backing for immediate labelling

Rust-free, impossible to lose and quick to install: quick-mounting screws

Installation friendly: the screwless terminal with release handle



Practical and easy to connect: AQUASTAR with generous wiring area and plenty of space for through-wiring (even for 5 x 2.5 mm<sup>2</sup>)

Easy to connect: The base that can be removed for all devices

Function and area of application always clearly allocated: All socket-outlet hinged lids, switches and light signals can be retrofitted with a labelling field.



Easy to align to problematic surfaces during installation thanks to diagonal arrangement of fixing holes

## THE AQUASTAR PRODUCT RANGE: A CROSS-SECTION



Roller shutter rocker switch



E14 light signal



Rocker control switch



Schuko<sup>®</sup> socket-outlet, lockable



Schuko<sup>®</sup> double socket-outlet



Slide with gland



Connecting element



Double entry



Conduit entry



Mini-trunking entry

**SOLUTIONS FOR INTELLIGENT BUILDINGS**

***merten***

**Merten GmbH & Co. KG**  
P.O. Box 100653  
D-51606 Gummersbach, Germany  
Phone +49 2261 702-203  
Fax +49 2261 702-328  
export@merten.de  
**www.merten.com**

