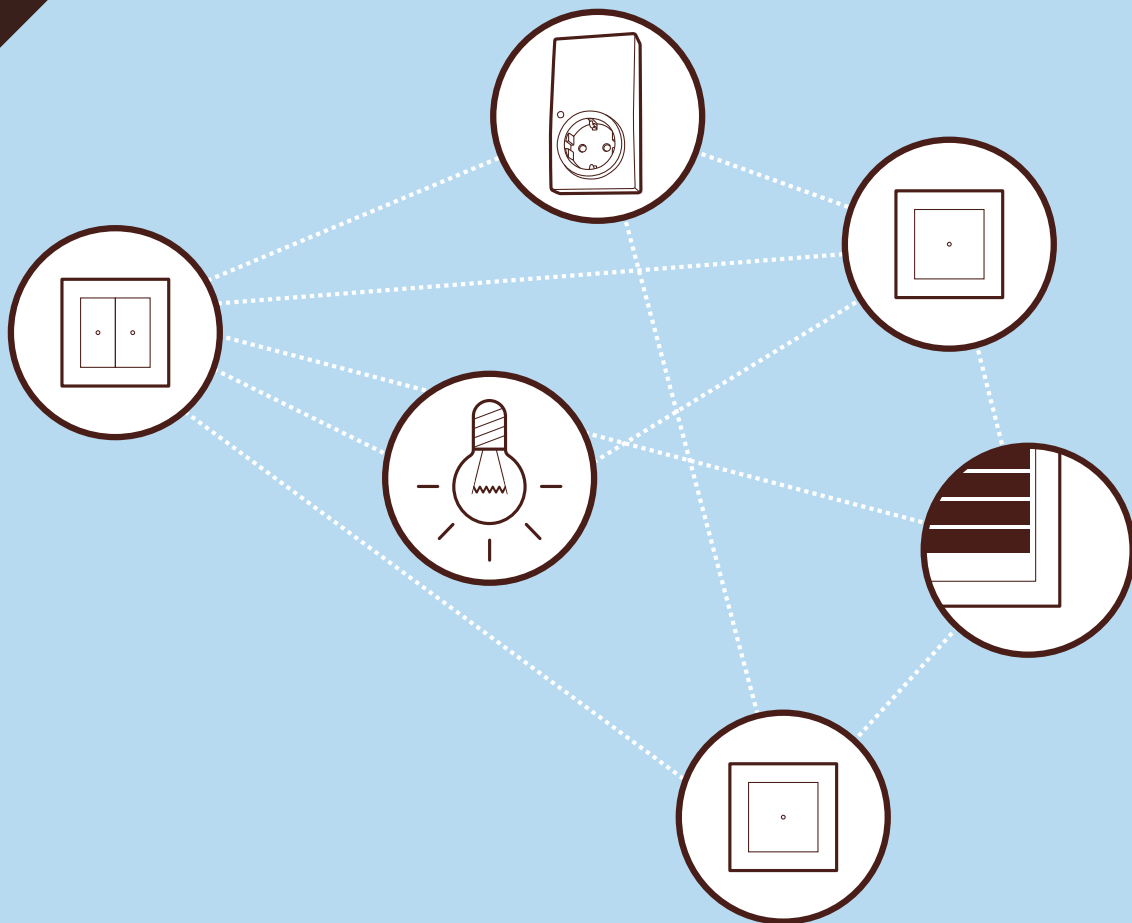


merten

CONNECT RADIO SYSTEM

SIMPLE AND INTELLIGENT – FOR THE SAFEST CONNECTIONS



NEW SOLUTIONS FOR OLD HOUSES
CONNECT RADIO SYSTEM





RENOVATION MARKET WITH A LOT LEFT TO DO

The market for living space modernisation is today among the fastest growing in the construction industry. After all, 30 million accommodation units in Germany date from before 1978. The need to renovate and modernise is correspondingly high. There are plenty of reasons to modernise one's own home: the children have moved out, the interior decoration is getting old or the garden needs to bathe in a bright atmosphere.

Accommodation units in buildings* in millions		Residential buildings in millions
As of 2003	38.689	18.745
built		
up to 1900	3.267	approx. 30 million units
1901 - 1918	2.629	
1919 - 1948	4.971	
1949 - 1978	18.094	
1979 - 1986	4.189	
1987 - 1990	1.236	
1991 - 2000	4.003	
2001 and later	297	

Source: Federal Statistical Office of Germany

*Excluding residential homes

MODERNISE THE CLEVER WAY - WITH THE NEW CONNECT RADIO SYSTEM

The new Merten CONNECT radio system is the perfect solution for anyone who wants to modernise their electrical installation. It offers a great amount of flexibility, comfort, safety and security where the control of functions like lighting, roller shutters, heating or multimedia is concerned. And all without having to tear open walls and lay

new cables. Finally, the new CONNECT radio system works "comfortably without cables" and ensures very safe connections.

You will find out how that works in practice on the following pages.

FUNCTIONAL PRINCIPLE

RE-ROUTING: ENSURING RELIABLE RADIO CONNECTIONS

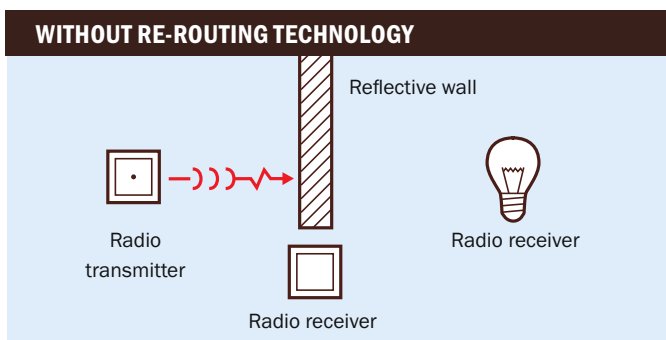
Reliable function with reliable radio connections is the be-all and end-all of a mature radio system. And this is precisely what the CONNECT radio system offers.

SECURE AND INNOVATIVE: MORE THAN A WAY TO THE DESIRED RADIO RECEIVER

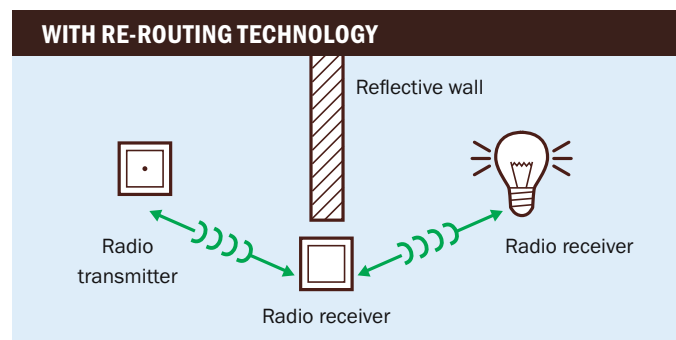
The Merten CONNECT radio system finds new ways of transmitting the radio signal. To be specific: always the best way. Sometimes it leads directly to the target receiver and sometimes it is forwarded via another receiver – depending on which receiver is currently best receiving the radio signal. The re-routing technology makes this possible. Your benefit: always the most reliable radio connections.

ALWAYS IN DIALOGUE: TRANSMITTER AND RECEIVER

Transmitters and receivers are in dialogue for optimal transmission of the radio signal. That means it is not a case of sending out a one-way radio signal; instead, it is constantly checked that the receiver really has received the radio signal. The receiver sends a response indicating whether it picked up the radio signal and what the signal quality was. If the reception acknowledgment is missing once (e.g. due to a reflective wall), the CONNECT radio system automatically searches for another way to transmit the radio signal to the receiver. For example, via another radio receiver in an adjacent room that can forward the signal to the actual receiver. Perfect conditions for a reliable, trouble-free radio system in which, by the way, up to 100 participants can be networked together.



No way through: With reflective walls or obstacles, the receiver waits for the radio signal in vain.



The most reliable solution: The signal of the new CONNECT radio system continuously and automatically searches further “stopovers” for the best path to the desired receiver.



Z-WAVE: BASIS OF THE CONNECT RADIO SYSTEM AND ESTABLISHED WORLDWIDE

As new as the possibilities are thanks to the innovative re-routing, the technical standard the CONNECT radio system is based on is proven: Z-wave. A technical standard created by numerous prominent manufacturers and successfully established worldwide. There are various solutions based on Z-wave from suppliers like Danfoss, Honeywell, Intel and Panasonic.



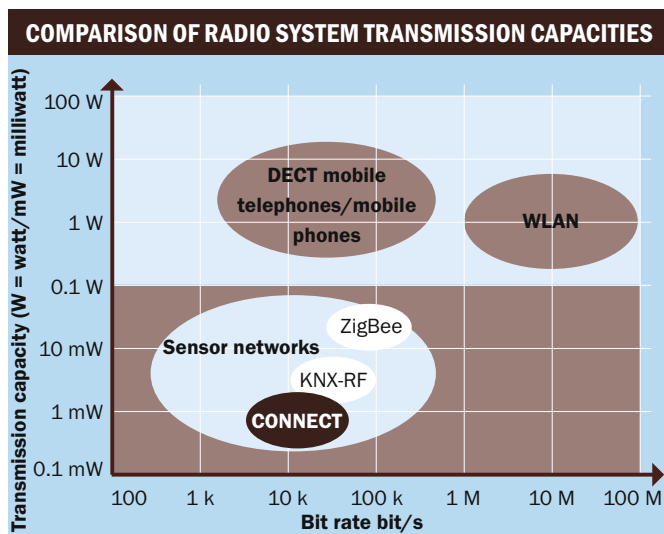
More information at: www.z-wavealliance.org

INTERFERENCE-FREE: SIGNAL RECEIVED ON 868 MHZ RADIO FREQUENCY

To protect you from interference, the new Merten CONNECT radio system uses the frequency 868 MHz, which has been specially reserved for short-distance radio. This means there can be no interference from other control, identification and positioning systems and audio devices transmitting in parallel.

MERTEN TECHNOLOGY: SAFE AND ENVIRONMENTALLY FRIENDLY

The Merten CONNECT radio system does not permanently transmit signals, but rather only when a radio transmitter is actuated (sensor network). And the radio transmission capacity is negligible in comparison to wireless DECT mobile telephones, mobile phones or WLAN systems, for example, and is completely safe and environmentally friendly. The transmission capacity of DECT mobile telephones and mobile phones is 10.000 times higher than that of the Merten radio system.



10.000 times lower in comparison to mobile telephones: the energy consumption of the new CONNECT radio system

INSTALLATION OF THE CONNECT RADIO SYSTEM

SIMPLE, CLEVER, SAFE

The Merten CONNECT radio system's safe radio communications and simple installation make it convincing. It can be programmed and configured in an incredibly simple way, and thanks to the new diagnosis tools, the safety of its functioning can be checked with absolute certainty.

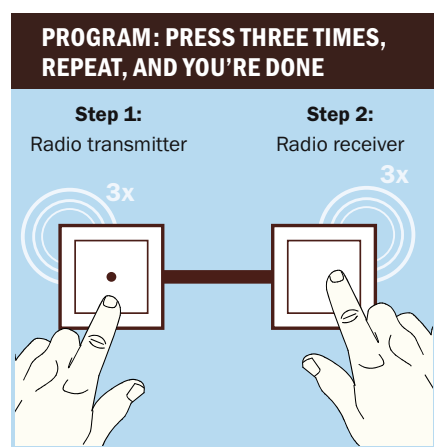
EASY CONNECT

THE SOLUTION FOR UP TO FIVE PARTICIPANTS

It couldn't be easier: Programming the radio transmitter and radio receiver in small radio applications with up to five participants is incredibly easy.

An example: If you want to switch on your floor lamp via a plug adapter using the radio push-button, there's no need

to reach for your screwdriver. Simply press the radio transmitter three times, then press the radio receiver three times, and that's it.



EASY TOOL CONNECT RADIO CONFIGURATOR

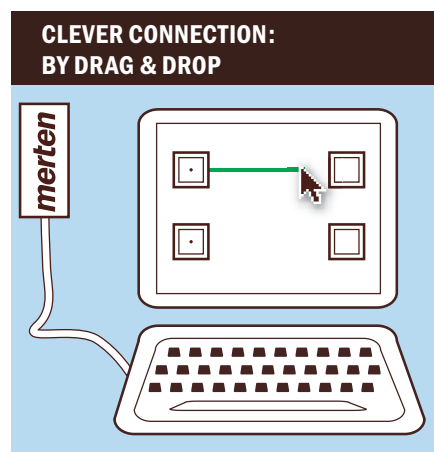
THE SOLUTION FOR MORE THAN FIVE PARTICIPANTS

Installation: simple and intuitive via mouse click

The CONNECT radio system offers numerous ways to safely control many different building functions via radio. The more demanding the application is (e.g. time switch functions or central functions), the more important simple installation and parameterisation becomes. With the software CONNECT radio configuration tool, they become completely intuitive for you.

Clear menus and the simple mouse-based configuration ("drag & drop") make it easy for you to plan radio solutions to equip rooms with radio components and to then assign them the desired functions.

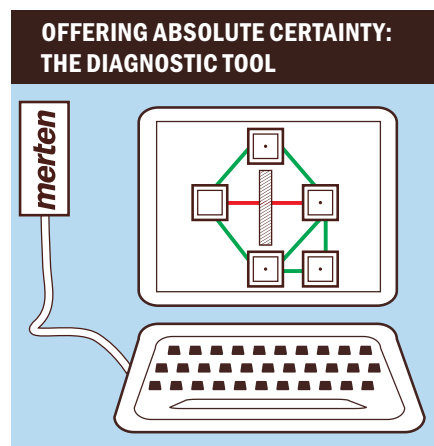
The perfect solution for simple radio retrofitting of a whole house.



Diagnostic tool: Security in black and white

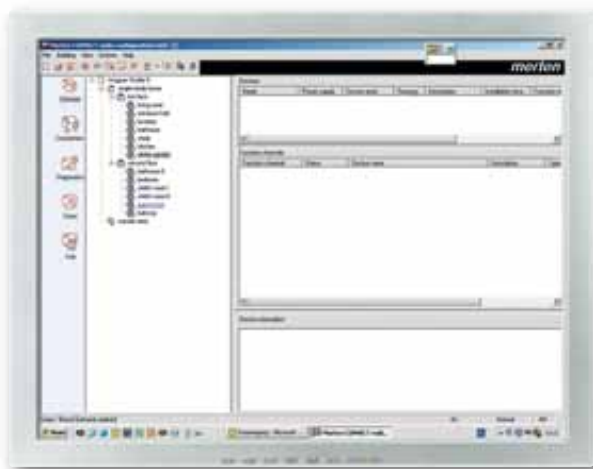
The diagnosis tool rounds off the installation: It shows the quality of the radio signal sent from the transmitter and how it reaches the receiver. The clear diagnostic protocol records the

results in writing and gives you absolute security that the installed radio application actually works as desired.



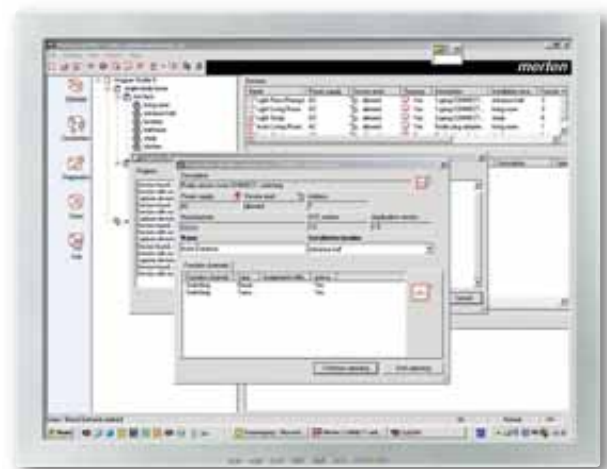


INSTALLATION & DIAGNOSIS STEP BY STEP TO HIGHLY RELIABLE RADIO CONNECTIONS



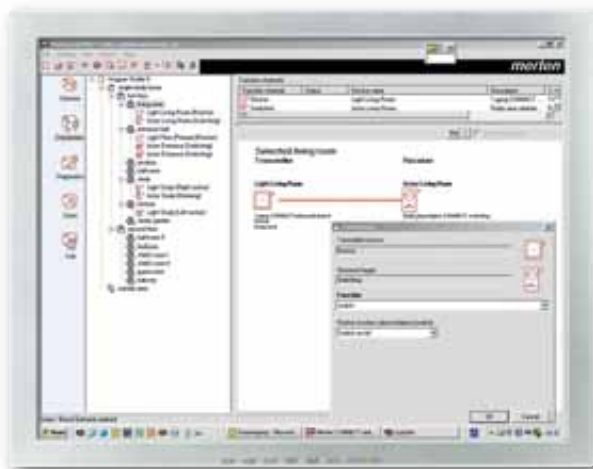
1. Specify rooms

All rooms to be equipped with radio components can be defined, represented clearly and individually labelled with simple selection menus.



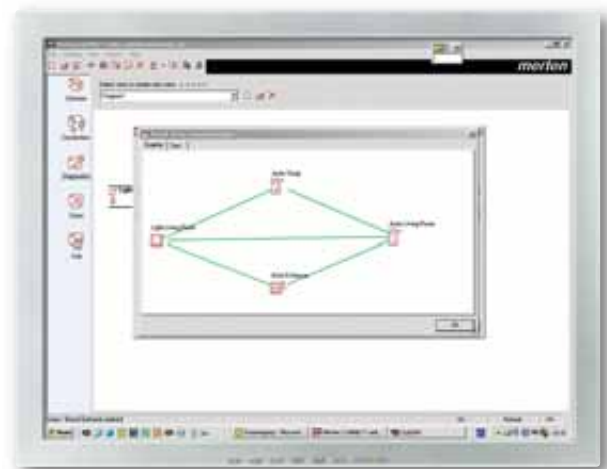
2. "Scan in" radio components

After all components have been installed in the house, they are read in with the Easy Tool CONNECT radio configurator.



3. Connect transmitter and receiver

After all radio components have been physically detected, it is possible to connect the radio transmitter and receiver by simple "drag & drop" and provide them with the desired functions.



4. Check radio connections

The diagnosis tool examines the radio solution and reports that it works perfectly: It shows the quality of the radio signal sent from the transmitter and how and by what paths it reaches the receiver.

CLEVER INSTALLATION



They can be quickly installed where there is no 230 V line: the CONNECT radio system's transmitters.

Stuck onto glass or screwed into the wall, the radio transmitter does not require a flush-mounted socket. And the best thing is that existing installations can be expanded in the blink of an eye using a radio transmitter. For example, just replace the System M or System Design 1-gang frame with a 2-gang frame and snap the extra radio transmitter into the free frame slot. Finished!

SIMPLE: THE INSTALLATION OF THE RADIO TRANSMITTER



The Merten screw-on radio transmitter.

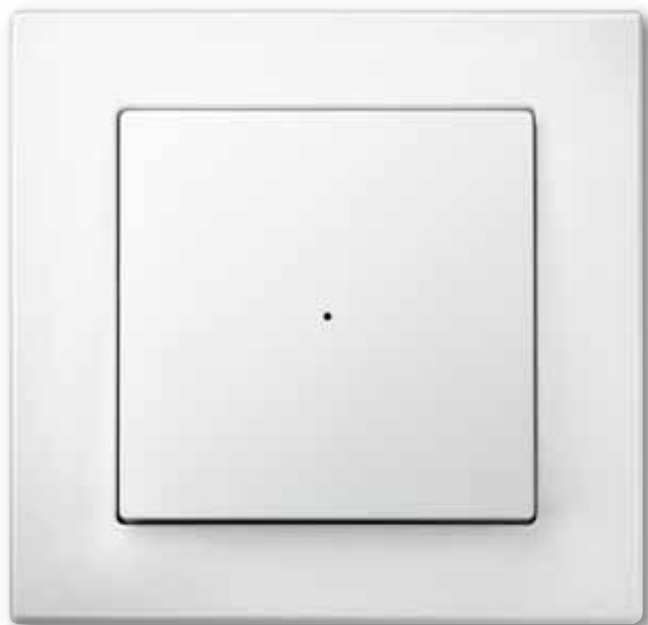


The Merten radio transmitter to simply and quickly clicking into existing switch programmes (no flush-mounted box necessary).



The Merten radio transmitter with aluminium-coloured foil for sticking onto glass.

RADIO TRANSMITTER EXCELLENT DESIGN



CONNECT radio push-button, 1-gang, M-PLAN

The new Merten CONNECT radio system offers not only all sorts of flexibility with respect to installation, but also in design. There are also compatible radio components for the Merten System M and System Design switch ranges, many of which have won numerous design prizes.

System Design



ARTEC



ANTI-K

System M



M-SMART



M-ARC



M-STAR



M-PLAN II

Move – the little round radio push-button for mobile switching

Move is for anyone who wants to be even more flexible. The new little round radio push-button can be easily removed from its respective wall bracket and used as a radio remote control. And you can snap it back into the frame when you're done. Or screw it alone to any place on the wall you like.

For example, when you want to dim the lighting from the bathroom mirror. Or if lighting is to be added to the closet or dressing room and you want to switch it on conveniently with Move. Or anything else!



Deluxe bathing: With Move, you can use lighting to get the right atmosphere when you're in the tub.



CONNECT radio push-button, Move, with wall bracket



BEAUTIFUL AND INTELLIGENT THE MERTEN CONNECT RADIO CENTRAL UNIT



The CONNECT radio system not only provides the most reliable connections but also ensures simple installation and function checking. With the new CONNECT radio central unit it shows its best side – and connects numerous new functions of the “radio world” and the “IP world” in a single control unit.

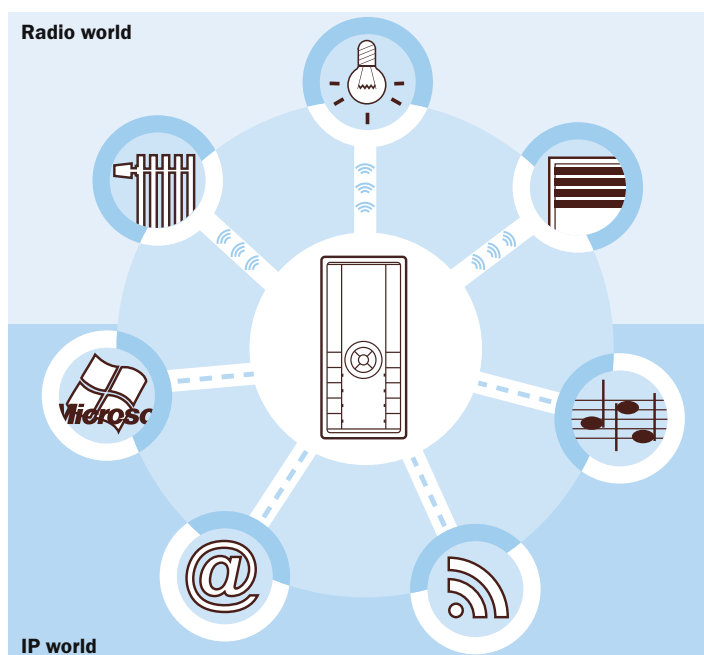
Conventional applications

- Controlling the lighting
- Controlling roller shutters
- Controlling the room temperature
- Activating scenes (e.g. “Central off”)
- Time switch function
- Controlling individual and group functions via merten@home or via the eight operator buttons of the CONNECT radio central unit

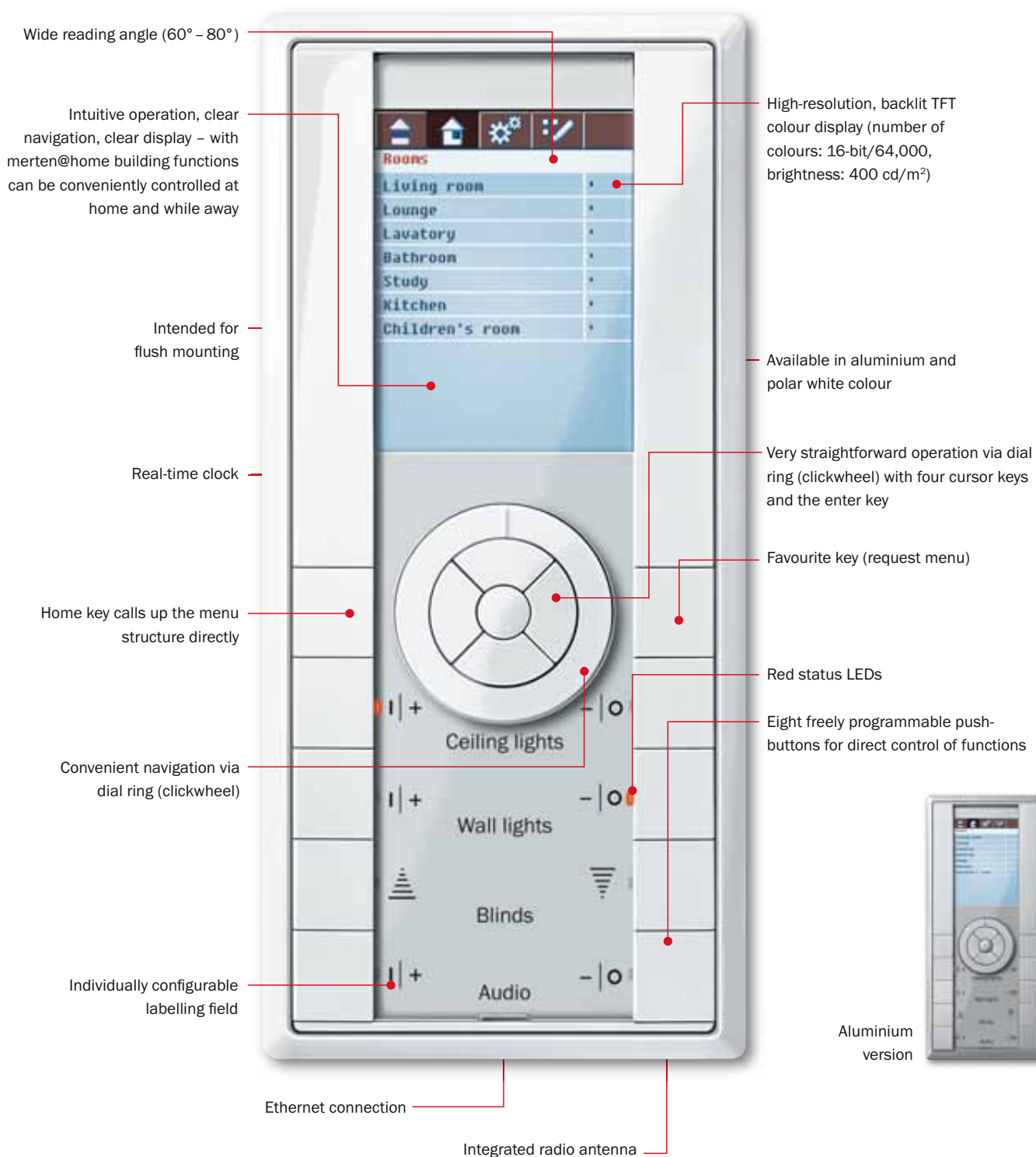
Multimedia applications

- Interface for the Microsoft Multimedia Center edition
- Multimedia activation via streaming clients (e.g. Squeezebox) as well as volume control, play, stop
- Display of current news thanks to RSS newsfeed
- Signalling e-mail arrivals
- Presentation of images in the form of a slideshow
- Digital clock as screensaver
- Recording history data and forwarding by e-mail (e.g. if the lighting is switched on while the homeowner is on holiday, he immediately receives a warning e-mail)
- and much more

Its special feature: You can access many functions even when you aren't home. The CONNECT radio central unit has an additional Ethernet connection and is controlled via merten@home. That way you can use the radio central unit to control building functions remotely even when you're away, for example via a hotspot at the airport. Maybe to turn up the heating at home before you arrive. And if you prefer to use merten@home at home, the clickwheel of the radio central unit makes it intuitive and very easy: just turn and press!



Building functions and many other applications can be controlled centrally with the CONNECT radio central unit.



CENTRAL OFF APPLICATION EXAMPLE

SAFETY FIRST



The situation:

Wouldn't it be nice to know that everything really is switched off when you leave the house? The light? The coffee machine?

The iron and all typical stand-by devices? And the heating too?

The Merten solution:

The CONNECT radio central unit installed in the hallway gives you all the answers at the push of a button. When the "Central off" scene is activated, all radio receivers belonging to the scene switch off automatically.



In order to save energy and increase security, all loads attached via a CONNECT radio plug adapter are detached from the mains. For example the iron, the coffee machine or typical stand-by devices like the television and stereo.



Any lights that have been left on anywhere in the house are switched off immediately. This includes the ceiling lamps. Thanks to the flush-mounted CONNECT radio receiver, they can be quite easily integrated into the CONNECT radio system.



Saves energy: The temperature of selected heaters is automatically lowered with the "Central off" scene. The CONNECT radio valve drive for heaters takes care of that.



You're on the safe side with the CONNECT radio system.

BEDROOM APPLICATION EXAMPLE

COMFORT TO DREAM OF



The situation:

You know what it's like. The only light switch in the bedroom is of course beside the door. Not exactly convenient. It would be

so much simpler to be able to dim or switch off the ceiling light directly from bed.

The Merten solution:

Replace the switch installed next to the door with a CONNECT radio sensor cover with a flush-mounted receiver. And you don't have to tear open walls or lay new cables.



CONNECT radio sensor cover



Universal super dimmer insert

To be able to switch off the ceiling light comfortably from the bed, just attach another CONNECT radio push-button beside your bed.



CONNECT radio push-button, 2-gang

And if you want, you can also activate the standard lamp in the bedroom from the bed.

How does that work? Just use a CONNECT radio plug adapter with radio receiver as an adapter between the Schuko socket-outlet and the standard lamp. Finished.



CONNECT radio plug adapter, universal dimmer

TERRACE APPLICATION EXAMPLE FANTASTIC VIEW



The situation:

Enjoying the sun terrace even without sun: the right lighting makes it possible. And the later the evening gets, the nicer

the effect. Too bad the switches for the outdoor light fixtures are not in the living room, but outside, or there are none at all.

The Merten solution:

To be able to switch off the garden lighting from the living room as well, first attach a CONNECT radio push-button right next to the terrace door. The practical thing is the radio push-button can be combined with the existing switch for the ceiling lamp. In a 2-gang frame and matching the existing switch design.



All that's missing is the radio receiver in the garden. Here we can offer you two possibilities.

Variation 1: You replace the existing switch outdoors with a CONNECT radio sensor cover with a flush-mounted receiver.

Variation 2: You equip each individual light in the garden with a flush-mounted CONNECT radio receiver.



Of course the terrace can also be put in the right light with the new mobile Move radio push-button. With just one push of the button and from any position you like.

Bright prospects for beautiful summer evenings.



PRESENCE SIMULATION APPLICATION EXAMPLE NO WORRIES ON HOLIDAY



The situation:

Do you want your house to look occupied while you are enjoying your holiday? The CONNECT radio system can do that for you too.

The Merten solution:

Before you leave the house, press one button to activate the “Presence simulation” scene.

Every night, the intelligent time switch function automatically lowers the electrically driven roller shutters in your house by radio, and raises them again in the morning.



CONNECT radio central unit



CONNECT radio roller shutter push-button with sensor connection



Standard blind control insert

In addition, the lighting automatically turns itself on and off via a time switch function both inside and outside the house.

That way your house looks occupied even in your absence and you can enjoy your holidays with an untroubled mind.








CONNECT radio sensor cover






Relay switch insert

RADIO TRANSMITTER AND RADIO RECEIVER ALWAYS ON THE SAME WAVELENGTH












Whether switching, dimming or controlling the roller shutters.
Those that belong together stay together: transmitter and receiver.

RADIO TRANSMITTER		
SOLUTIONS	PRODUCT	
To control classical radio receivers and multimedia applications <ul style="list-style-type: none"> Managing central functions of the radio system Controlling individual or group functions via the merten@home surface or eight operator buttons Integrated web server for PC, touch panel and PDA operation with merten@home 		CONNECT radio central unit, merten@home, colour 505919 polar white 505960 aluminium
To control the radio receiver <ul style="list-style-type: none"> Extremely flat design The ideal solution for retrofitting Can be secured with screws or adhesive Can be snapped into existing switch ranges 		CONNECT radio push-button, 1-gang Battery-powered System M 5061xx Thermoplastic brilliant System M 5051xx Thermoplastic classy matt System Design 5071xx
To control the radio receiver <ul style="list-style-type: none"> Extremely flat design The ideal solution for retrofitting Can be secured with screws or adhesive Can be snapped into existing switch ranges 		CONNECT radio push-button, 2-gang Battery-powered System M 5062xx Thermoplastic brilliant System M 5052xx Thermoplastic classy matt System Design 5072xx
For integration into any conventional switch range in the radio system <ul style="list-style-type: none"> Just place the radio pellet behind the push-button or switch inserts in the flush-mounted socket 		CONNECT radio transmitter flush-mounted, 4-gang Battery-powered 506004
Move Mobile switching and dimming of lighting <ul style="list-style-type: none"> Can be used as a sort of mini-remote control 		CONNECT radio push-button, Move Battery-powered Incl. wall bracket System M 5081xx Thermoplastic brilliant System M 5080xx Thermoplastic classy matt System Design 5082xx

RADIO RECEIVER FOR COMPLETE DEVICES		
SOLUTIONS	COMPLETE DEVICE	
For switching mobile devices on/off <ul style="list-style-type: none"> For example, a coffee machine or a television Can be operated with a "local" switch or remote controlled via radio transmitter 		CONNECT radio plug adapter, switch 508519
With dimming function for atmospheric lighting <ul style="list-style-type: none"> Table lamps or floor lamps, for example Can be operated with a "local" switch/dimmer or remote controlled via radio transmitter 		CONNECT radio plug adapter, universal dimmer 508619
Heating control <ul style="list-style-type: none"> CONNECT radio valve drive for heaters Can be used in conjunction with the CONNECT radio central unit Temperature range 8 - 28°C 		CONNECT radio valve drive for heaters, comfort/standby Battery-powered 509201



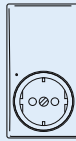

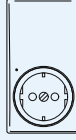




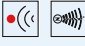
Interested in further details about the CONNECT radio system?
Our Merten field representatives are on hand to help you.

RADIO RECEIVER FOR FLUSH-MOUNTED INSTALLATION				
SOLUTIONS	INSERTS		DESIGN COVER	
SWITCHING				
Switching ohmic loads <ul style="list-style-type: none"> For example, incandescent lamps, 230 V halogen lamps 		Electronic switch insert 576799		CONNECT radio sensor cover, for switch inserts System M 5034xx Thermoplastic brilliant System M 5024xx Thermoplastic classy matt System Design 5044xx
Switching of ohmic, inductive or capacitive loads <ul style="list-style-type: none"> For example, incandescent lamps, fluorescent lamps, energy-saving lamps, LV halogen lighting 		Relay switch insert 576897		CONNECT radio sensor cover, for switch inserts System M 5034xx Thermoplastic brilliant System M 5024xx Thermoplastic classy matt System Design 5044xx
Switching of ohmic, inductive or capacitive loads <ul style="list-style-type: none"> To install in flush-mounted sockets or on a ceiling hook in the ceiling rose 		CONNECT radio receiver, flush-mounted, 1-gang switch 507001		
DIMMING				
Dimming of ohmic, inductive and capacitive loads <ul style="list-style-type: none"> For example, incandescent lamps, 230 V halogen lamps, dimmable wound transformers, electronic transformers Phase control or phase alignment 		Universal super dimmer insert 577099		CONNECT radio sensor cover for dimmer inserts System M 5036xx Thermoplastic brilliant System M 5026xx Thermoplastic classy matt System Design 5046xx
BLIND CONTROL				
Controlling a blind/roller shutter drive <ul style="list-style-type: none"> “Local” operation of a blind/roller shutter motor with limit switch 		Standard blind control insert 580698		CONNECT radio roller shutter push-button with sensor connection System M 5035xx Thermoplastic brilliant System M 5025xx Thermoplastic classy matt System Design 5045xx
Controlling a blind/roller shutter drive <ul style="list-style-type: none"> “Local” operation of a blind/roller shutter motor with limit switch Extension input for roller shutter switch/push-button or an additional blind control insert for group/central control 		Blind control insert with extension input 580699		CONNECT radio roller shutter push-button with sensor connection System M 5035xx Thermoplastic brilliant System M 5025xx Thermoplast classy matt System Design 5045xx




Radio transmitters

Function	Channels	Transmitter
<ul style="list-style-type: none"> - CONNECT radio system, central control and visualisation - Eight freely programmable operating buttons - Administration of central functions of the radio system (32 scenes, time switch with 20 weekly and 12 annual time switch programs, 1 history function) - IP address: adjustable or can be assigned dynamically via DHCP - Integrated web server for PC, touch panel, PDA operation with merten@home - Integrated real-time clock with reserve power of 4 hrs. - Piezo loudspeaker for acoustic alarm - Alarm/message display and additional e-mail forwarding - Signalling when e-mails arrive - Multimedia application: Control of network mp3 players or streaming clients - JPG image slide shows (FTP server on the Internet) - Displaying current news (RSS feeder) - Interface for the Microsoft Multimedia Center edition - Radio range: up to 50 m outdoors, up to 20 m indoors 	<p>8 fixed + 1,000 that are configurable via software</p>	<p>CONNECT radio central unit, merten@home, colour 5059..</p>
<ul style="list-style-type: none"> - Radio remote control and IR remote control. Activating devices of the Merten CONNECT radio system, Merten IR devices and up to five IR AV devices (TV, DVD, DVDR, VCR, SAT, cable, AMP, DMR). - Programming as a system administrator with the EASY CONNECT method - Programming with the CONNECT radio configurator - Individual programming of CONNECT radio push-buttons - Individual description of rooms and groups - Activates Philips Ambilight - Supports more than 1,000 manufacturers. Devices are selected from a list or by entering programming codes - General use of the functions of a device (e.g. volume) in all modes - Radio range: up to 100 m outdoors, up to 30 m indoors - IR range: up to 15 m - Display element: LCD display with 10 characters 	<p>20</p>	<p>CONNECT radio universal remote control 506923 Battery: 3 microcells (IEC LR 03, AAA)</p>
<ul style="list-style-type: none"> - Battery-powered radio transmitter for controlling the Merten CONNECT radio system's radio receiver - Radio range: up to 100 m outdoors, up to 30 m indoors 	<p>2</p>	<p>CONNECT radio push-button, 1-gang System M 5061.., 5051.. System Design 5071.. Battery: 1 lithium button cell (CR 2450)</p>
<ul style="list-style-type: none"> - Battery-powered radio transmitter for controlling the Merten CONNECT radio system's radio receiver - Radio range: up to 100 m outdoors, up to 30 m indoors 	<p>4</p>	<p>CONNECT radio push-button, 2-gang System M 5062.., 5052.. System Design 5072.. Battery: 1 lithium button cell (CR 2450)</p>
<ul style="list-style-type: none"> - Battery-powered mobile radio transmitter for controlling the Merten CONNECT radio system's radio receiver - With wall bracket. The wall bracket is suitable for sticking onto walls or glass, screwing onto walls or flush-mounted boxes as well as installing in a multiple combination. - Radio range: up to 100 m outdoors, up to 30 m indoors <p> The device can assume the features and characteristics of the system administrator. As it concerns a mobile device we recommend that you preferably select a fixed device as system administrator. Instead use for example a CONNECT radio push-button, 1-gang.</p>	<p>1</p>	<p>CONNECT radio push-button, Move System M 5080.., 5081.. System Design 5082.. Battery: 1 lithium button cell (CR 2450)</p>
<ul style="list-style-type: none"> - Battery-powered radio transmitter for connecting up to 4 floating switch contacts (e.g. standard push-buttons) - For the remote control of other receivers from the Merten CONNECT radio system via push-buttons from the Merten switch ranges - Automatic recognition of the connected devices, for example sensor, switch or push-button - Radio range: up to 100 m outdoors, up to 30 m indoors 	<p>4</p>	<p>CONNECT radio transmitter flush-mounted, 4-gang 506004 Battery: 1 lithium button cell (CR 2450)</p>
<ul style="list-style-type: none"> - Mains-supplied radio transmitter. In connection with the CONNECT radio configurator, the sensor cover can activate the insert itself as well as additional devices when used locally. - Radio range: up to 100 m outdoors, up to 30 m indoors <p>Note: The device is rounded off by the electronic switch insert, art. no. 576799 or the relay switch insert, art. no. 576897.</p>	<p>1</p>	<p>CONNECT radio sensor cover, for switch inserts System M: 5034.., 5024.. System Design: 5044..</p>
<ul style="list-style-type: none"> - Mains-supplied radio transmitter. In connection with the CONNECT radio configurator, the sensor cover can activate the insert itself as well as additional devices when used locally. - Radio range: up to 100 m outdoors, up to 30 m indoors <p>Note: The device is rounded off by a universal super dimmer insert, art. no. 577099.</p>	<p>1</p>	<p>CONNECT radio sensor cover for dimmer inserts System M: 5036.., 5026.. System Design: 5046..</p>
<ul style="list-style-type: none"> - Mains-supplied radio transmitter. In connection with the CONNECT radio configurator, the roller shutter push-button can activate the insert itself as well as additional devices when used locally. - Radio range: up to 100 m outdoors, up to 30 m indoors <p>Note: The device is complemented by a blind control insert, art. no. 580698 or by a blind control insert with extension input, art. no. 580699.</p>	<p>1</p>	<p>CONNECT radio roller shutter push-button with sensor connection System M: 5035.., 5025.. System Design: 5045..</p>

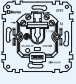

Radio receiver complete devices

Function	Receiver
<ul style="list-style-type: none"> - For switching external loads with SCHUKO plug. - Manual operation is possible via the sensor surface and can be controlled remotely via Merten CONNECT radio system transmitters. - Radio functions: Switch on, switch off, scene. 	 <p>CONNECT radio plug adapter, switch 508519 AC 230 V, 50 Hz 16 A, $\cos \phi = 1$, max 35 μF</p> 
<ul style="list-style-type: none"> - For switching and dimming external loads with SCHUKO plug - Manual operation is possible via the sensor surface and can be controlled remotely via Merten CONNECT radio system transmitters - For ohmic, inductive and capacitive loads, e.g. incandescent lamps, dimmable wound transformers or electronic transformers - Phase control or phase alignment - Memory function that can be switched off - Automatic load detection - Radio functions: Switch on, switch off, dim, scene <p>Caution! Only suitable for dimmable lights. Do not plug in any other loads like TV, vacuum cleaner etc. Observe maximum load.</p> <p>Caution! Do not connect any mixed loads.</p>	 <p>CONNECT radio plug adapter, universal dimmer 508619 AC 230 V, 50 Hz 40 VA - 350 VA</p> 
<ul style="list-style-type: none"> - For switching a load via a floating make contact - Can be controlled remotely via transmitters in the Merten CONNECT system - Radio functions: Toggle, on, off, push-button operation <p>Caution! Contact scanning should be regarded just like a 230 V connection. Take appropriate measures to prevent direct contact.</p>	 <p>CONNECT radio receiver, flush-mounted, 1-gang switch 507001 AC 230 V, 50 Hz 10 A, $\cos \phi = 1$, max 35 μF</p> 
<ul style="list-style-type: none"> - For manually adjusting the desired room temperature locally - With the CONNECT radio central unit, it is possible to reduce/increase the temperature by about 4 °C - Functions: Toggling between comfort and standby 	 <p>CONNECT radio valve drive for heaters, comfort/standby 509201 Battery: 2 Mignon 1.5 V (IEC LR 6, AA)</p> 

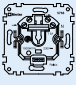

Radio receiver for flush mounting

Function	Design covers	Inserts
		<p>Manual operation is possible via the sensor surface and can be controlled remotely using Merten CONNECT radio system transmitters.</p>    <p>CONNECT radio sensor cover for switch inserts System M System Design 5034... 5024... 5044...</p> <p>CONNECT radio sensor cover for dimmer inserts 5036... 5026... 5046...</p> <p>CONNECT radio roller shutter push-button with sensor connection 5035... 5025... 5045...</p>

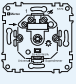

Electronic switch (2 conductors - neutral conductor is not required)

<p>Switching of ohmic loads</p> <ul style="list-style-type: none"> - Incandescent lamps, 230 V halogen lamps 	 <p>Electronic switch insert 576799 (40 - 300 W)</p> 			
--	--	--	--	--

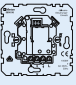
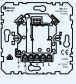
Relay switch (3 conductors - neutral conductor is required)

<p>Switching of ohmic, inductive or capacitive loads</p> <ul style="list-style-type: none"> - Incandescent lamps, fluorescent lamps, energy-saving lamps, LV halogen lighting etc. 	 <p>Relay switch insert 576897 0 - 1000 W/VA, max. 140 μF</p> 			
--	---	--	--	--

Dimmer (2 conductors - neutral conductor is not required)

<p>Dimming of ohmic, inductive and capacitive loads</p> <ul style="list-style-type: none"> - Incandescent lamps, 230 V halogen lamps, dimmable wound transformers, electronic transformers - Phase control or phase alignment - Extension input for push-buttons and extension TELE inserts 	 <p>Universal super dimmer insert 577099 at 50 Hz: 25 - 420 VA; at 60 Hz: 25 - 340 W</p> 			
---	--	--	--	--

Roller shutter

<p>Controlling a blind/roller shutter drive</p> <ul style="list-style-type: none"> - Local operation of a blind/roller shutter motor with limit switch. - Motor protection by interlocked relay contacts. - Neutral conductor required 	 <p>Standard blind control insert 580698 (max. 1 motor 1000 VA)</p>			
<p>Controlling a blind/roller shutter drive</p> <ul style="list-style-type: none"> - Local operation of a blind/roller shutter motor with limit switch. - Extension input for roller shutter switch/push-button or additional blind control insert for group/central control. - Wind alarm function can be implemented - Motor protection by interlocked relay contacts - Neutral conductor required 	 <p>Blind control insert with extension input 580699 (max. 1 motor 1000 VA)</p>			

Merten CONNECT radio system

The Merten CONNECT radio system is a bi-directional radio network. That means that all devices can transmit and receive signals simultaneously. Thus it is possible for signals to be routed or for alternative radio transmission paths to be searched for (e.g. during temporary faults).

There are two configuration methods:

- The EASY CONNECT method: For the connection of max. five devices which are in the direct vicinity of one and other (e.g. in one room). Configuration is carried out manually.
- Using the CONNECT radio configurator: For systems between different rooms with up to 100 devices and extensive functions (scenes, central switching function, switch times, individual key assignment).

For both types of installation methods a so called "system administrator" must always be integrated.

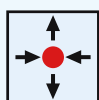
Properties:

- Secure transmission using frequency range 868 MHz
- Clear addressing enables interference-free operation of multiple radio systems side by side
- Very flexible installation and configuration
- No cable routing required, due to the use of battery-powered transmitters
- Extension of existing installations
- Implementation of groups, scene controlling options and central functions
- The extensive product spectrum covers all areas of application such as lighting control, roller shutter control, scene and heating control.
- Simple teaching in of freely programmable functions
- Extremely flat battery-powered push-button e.g. for attaching to glass
- Indoor transmission range: around 30 m (depending on place of installation and building characteristics such as materials and wall thickness)
- Range in free field: approx. 100 m

Explanation of symbols:



The device can assume the functions of the system administrator. We recommend to use only fixed devices as system administrator (e.g. CONNECT radio push-button, 1-gang).



The device has the routing function. It automatically relays signals and maintains fault-free operation.



The device transmits signals.



The device receives signals and switches accordingly e.g. light or roller shutter.



Z-Wave standard
The device is compatible with Z-wave products from other manufacturers.

CONNECT radio system, central unit



CONNECT radio central unit, merten@home, colour

Central device with eight freely programmable operator buttons and 3.5" colour display for the central control and visualisation of a Merten CONNECT radio system. The user interface is merten@home.

Radio features: **Router**

The radio central unit is configured with the CONNECT radio configurator.

It is installed in a flush-mounted double box. For the optional flush mounted power supply an additional flush-mounted box is covered by the radio central unit.

Functions:

- Administration of central functions of the radio system (32 scenes, time switch with 20 weekly and 12 annual time switch programs, 1 history function)
- IP address: fixed or dynamic assignment via DHCP
- Integrated web server for PC operation, touch panel, PDA operation with merten@home
- Integrated real-time clock with reserve power of 4 hrs.
- Piezo loudspeaker for acoustic alarm
- Alarm/message display and additional e-mail forwarding
- Signalling when e-mails arrive
- Multimedia application: Controlling network mp3 players or streaming clients
- JPG image slide shows (FTP server on the Internet)
- Displaying current news (RSS feeder)
- Interface for the Microsoft Multimedia Center edition

Power consumption: approx. 7 W

Power supply: DC 24 V, 0.3 A

Operating elements: clickwheel, arrow buttons, back key, home key, 8 operator buttons for direct access

Display size: 3.5" (8.9 cm)

Resolution: 320 x 240 pixels

Display type: TFT with 16 million colours

Interfaces: 1 x RJ45 Ethernet 10/100 MBit/s; CONNECT radio system

Memory: 8 MB Flash/RAM

Radio frequency: 868 MHz

Radio range: up to 50 m in free field, up to 20 m indoors

Dimensions: 220 x 105 x 50 mm (HxWxD)

Type of protection: IP 20

■ **Accessories:** Power supply, flush-mounted, art. no. 505599.

■ **Transmitter:** All transmitters of the Merten CONNECT radio system.

■ **Receiver:** All receivers of the Merten CONNECT radio system.

■ **Note:** A RJ45 connector suitable for field assembly is recommended for the Ethernet connection, e.g. FM45 from Reichle+De-Massari. The CONNECT radio configurator for the Merten CONNECT radio system is available via the Internet or on the Merten info CD.

■ **Contents:** With design frame.

Version	Art. no.	PU	PG	Info
polar white	505919	1/4	8	
aluminium	505960	1/4	8	



Power supply, flush-mounted

For supplying power to the CONNECT radio central unit, merten@home. The power supply is installed via a flush-mounted box directly above the radio central unit's flush-mounted double box.

Primary supply: AC 230 V, 48-63 Hz
Output voltage: DC 24 V +/- 3 %
Output current: max. 0.5 A
Connecting terminals: Screw terminals

- ▶ **For supplying power to:** CONNECT radio central unit, merten@home, colour art. no. 5059...

Version	Art. no.	PU	PG	Info
	505599	1/1	8	

CONNECT radio system, configurator



CONNECT radio USB data interface

For connecting a PC equipped with a USB interface to the Merten CONNECT radio system. The radio system is conveniently configured on the PC using the CONNECT radio configurator and is set up via the data interface.



Radio features: **System administrator**

Functions:

- "plug and play" installation
- Driver for all common Windows operating systems
- Fastening clip for fastening on to a Notebook display
- Power supply via the PC's USB interface.

- ▶ **Transmitter:** All transmitters of the Merten CONNECT radio system.

Receiver: All receivers of the Merten CONNECT radio system.

- ▶ **Contents:** CONNECT radio configurator and driver on CD, USB cable.

Version	Art. no.	PU	PG	Info
	506801	1/12	8	



CONNECT radio configuration tool

Software for conveniently programming the Merten CONNECT radio system components.

Functions:

- Graphic user interface. Link the components by dragging the connection lines with the mouse.
- Analysis and search functions
- Diagnostics functions: e.g. single diagnosis of the radio system at the installation location
- Conformity measurement
- Documentation of installation and diagnostics report

- ▶ **Note:** The CONNECT radio configurator for the Merten CONNECT radio system is available via the Internet or on the Merten info CD.

CONNECT radio system, push-button



CONNECT radio universal remote control

Radio remote control and IR remote control in a single device. For activating:

- Devices of the Merten CONNECT radio system
- Merten IR devices
- Up to five IR AV devices such as TV, DVD, DVDR, VCR, SAT, cable, AMP and DMR

In connection with the CONNECT radio system, several rooms can be set up with radio components using the remote control. Each room can be configured with up to 9 groups with maximum 12 devices and 3 scenes with maximum 12 devices. Radio features: **System administrator, transmitter**

Functions:

CONNECT radio system

- Programming as a system administrator with the EASY CONNECT method
- Programming with the CONNECT radio configurator
- Individual programming of CONNECT radio push-buttons
- Individual description of rooms and groups
- Display of description in LCD display

Extended functions for IR/AV:

- Activates Philips Ambilight
- Supports more than 1,000 manufacturers. Devices are selected from a list or by entering programming codes.
- General use of the functions of a device (e.g. volume) in all modes.

Radio range: up to 100 m in free field, up to 30 m indoors

IR range: up to 15 m

Battery: 3 microcells (IEC LR 03, AAA)

Display element: LCD display with 10 characters

Dimensions: 30 4 x 15 7 x 3 7 cm (H x W x D)

- ▶ **Receiver:** All receivers of the Merten CONNECT radio system.

- ▶ **Note:** The device can assume the properties of a system administrator. The remote control must be used as the system administrator in connection with the EASY CONNECT method. In connection with the CONNECT radio configurator, it can be used as required.

Contents: With battery. With a codes table for nearly all conventional devices, like TV, VCR, DVD, SAT, AUX, ...

Availability: 1st quarter of 2008

Version	Art. no.	PU	PG	Info
Aluminium/black	506923	1/12	8	NEW



CONNECT radio push-button, Move

For System M.

Battery-powered mobile radio transmitter with 1 channel. For activating the Merten CONNECT radio system's radio receiver. A maximum of 12 radio receivers can be connected.

Radio features: **System administrator (see note)**
High level of flexibility when installing. A flush-mounted box is not necessary. The wall bracket is suitable for sticking onto walls or glass, screwing onto walls or flush-mounted boxes as well as installing in a multiple combination.

Channels: 1

Range: up to 100 m free field, up to 30 m indoors

Battery: 1 lithium button cell (CR 2450)

Display elements: LED for transmission confirmation/programming

Dimensions: 44 x 12.5 mm (Ø x H)

▣ **Receiver:** All receivers of the Merten CONNECT radio system.

▣ **Note:** The device can assume the features and characteristics of the system administrator. As it concerns a mobile device we recommend that you preferably select a fixed device as system administrator. Instead use for example a CONNECT radio push-button, 1-gang.

Contents: Battery, wall bracket, double-sided adhesive strips, single-sided adhesive foils aluminium-coloured, screws, dowels.

Version	Art. no.	PU	PG	Info
---------	----------	----	----	------

▣ Thermoplastic brilliant

white, glossy	508144	1/40	8	NEW
polar white, glossy	508119	1/40	8	NEW
active white, glossy	508125	1/40	8	NEW

▣ Thermoplastic classy matt

white	508044	1/40	8	NEW
polar white	508019	1/40	8	NEW
anthracite	508014	1/40	8	NEW
aluminium	508060	1/40	8	NEW

▣ **Duroplastic, highly scratch-resistant: With this article, use thermoplastic brilliant**



CONNECT radio push-button, 1-gang

For System M.

Battery-powered radio transmitter with 2 channels. For activating the Merten CONNECT radio system's radio receiver. A maximum of 12 radio receivers per channel can be connected.

Radio features: **System administrator**
In connection with the CONNECT radio configurator, the scene controller in the push-button can be activated to implement functions such as "Bell push-button" or "Toggle".

High installation flexibility due to flat design. A flush-mounted socket-outlet is not necessary. The push-button is suitable for sticking onto walls or glass, screwing onto walls or flush-mounted outlets as well as installing in a multiple combination.

Channels: 2

Range: up to 100 m free field, up to 30 m indoors

Battery: 1 lithium button cell (CR 2450)

Display elements: LED for transmission confirmation/programming

▣ **Receiver:** All receivers of the Merten CONNECT radio system.

▣ **Contents:** Battery, retaining plate, double-sided adhesive strips, single-sided adhesive foils aluminium-coloured, screws, dowels.

Version	Art. no.	PU	PG	Info
---------	----------	----	----	------

▣ Thermoplastic brilliant

white, glossy	506144	1/40	8	
polar white, glossy	506119	1/40	8	
active white, glossy	506125	1/40	8	

▣ Thermoplastic classy matt

white	505144	1/40	8	
polar white	505119	1/40	8	
anthracite	505114	1/40	8	
aluminium	505160	1/40	8	

▣ **Duroplastic, highly scratch-resistant: With this article, use thermoplastic brilliant**



CONNECT radio push-button, 2-gang

For System M.

Battery-powered radio transmitter with 4 channels. For activating the Merten CONNECT radio system's radio receiver. A maximum of 12 radio receivers per channel can be connected.

Radio features: **System administrator**
In connection with the CONNECT radio configurator, the scene controller in the push-button can be activated to implement functions such as "Bell push-button" or "Toggle".

High installation flexibility due to flat design. A flush-mounted socket-outlet is not necessary. The push-button is suitable for sticking onto walls or glass, screwing onto walls or flush-mounted outlets as well as installing in a multiple combination.

Channels: 4

Range: up to 100 m free field, up to 30 m indoors

Battery: 1 lithium button cell (CR 2450)

Display elements: LED for transmission confirmation/programming

▣ **Receiver:** All receivers of the Merten CONNECT radio system.

▣ **Contents:** Battery, retaining plate, double-sided adhesive strips, single-sided adhesive foils aluminium-coloured, screws, dowels.

Version	Art. no.	PU	PG	Info
---------	----------	----	----	------

▣ Thermoplastic brilliant

white, glossy	506244	1/40	8	
polar white, glossy	506219	1/40	8	
active white, glossy	506225	1/40	8	

▣ Thermoplastic classy matt

white	505244	1/40	8	
polar white	505219	1/40	8	
anthracite	505214	1/40	8	
aluminium	505260	1/40	8	

▣ **Duroplastic, highly scratch-resistant: With this article, use thermoplastic brilliant**



CONNECT radio push-button, Move

For System Design.

Battery-powered mobile radio transmitter with 1 channel. For activating the Merten CONNECT radio system's radio receiver. A maximum of 12 radio receivers can be connected.

Radio features: **System administrator (see note)**

High level of flexibility when installing. A flush-mounted box is not necessary. The wall bracket is suitable for sticking onto walls or glass, screwing onto walls or flush-mounted boxes as well as installing in a multiple combination.

Channels: 1

Range: up to 100 m free field, up to 30 m indoors

Battery: 1 lithium button cell (CR 2450)

Display elements: LED for transmission confirmation/programming

Dimensions: 44 x 12.5 mm (Ø x H)

- ▣ **Receiver:** All receivers of the Merten CONNECT radio system.
- ▣ **Note:** The device can assume the features and characteristics of the system administrator. As it concerns a mobile device we recommend that you preferably select a fixed device as system administrator. Instead use for example a CONNECT radio push-button, 1-gang.

Contents: Battery, wall bracket, double-sided adhesive strips, single-sided adhesive foils aluminium-coloured, screws, dowels.

Version	Art. no.	PU	PG	Info
Thermoplastic brilliant				
white	508244	1/40	8	NEW
polar white	508219	1/40	8	NEW
aluminium	508260	1/40	8	NEW
metallic				
varnished stainless steel	508246	1/40	8	NEW



CONNECT radio push-button, 1-gang

For System Design.

Battery-powered radio transmitter with 2 channels. For activating the Merten CONNECT radio system's radio receiver. A maximum of 12 radio receivers per channel can be connected.

Radio features: **System administrator**

In connection with the CONNECT radio configurator, the scene controller in the push-button can be activated to implement functions such as "Bell push-button" or "Toggle".

High installation flexibility due to flat design. A flush-mounted socket-outlet is not necessary. The push-button is suitable for sticking onto walls or glass, screwing onto walls or flush-mounted outlets as well as installing in a multiple combination.

Channels: 2

Range: up to 100 m free field, up to 30 m indoors

Battery: 1 lithium button cell (CR 2450)

Display elements: LED for transmission confirmation/programming

- ▣ **Receiver:** All receivers of the Merten CONNECT radio system.
- ▣ **Contents:** Battery, retaining plate, double-sided adhesive strips, single-sided adhesive foils aluminium-coloured, screws, dowels.

Version	Art. no.	PU	PG	Info
Thermoplastic brilliant				
white	507144	1/40	8	
polar white	507119	1/40	8	
aluminium	507160	1/40	8	
metallic				
varnished stainless steel	507146	1/40	8	



CONNECT radio push-button, 2-gang

For System Design.

Battery-powered radio transmitter with 4 channels. For activating the Merten CONNECT radio system's radio receiver. A maximum of 12 radio receivers per channel can be connected.

Radio features: **System administrator**

In connection with the CONNECT radio configurator, the scene controller in the push-button can be activated to implement functions such as "Bell push-button" or "Toggle".

High installation flexibility due to flat design. A flush-mounted socket-outlet is not necessary. The push-button is suitable for sticking onto walls or glass, screwing onto walls or flush-mounted outlets as well as installing in a multiple combination.

Channels: 4

Range: up to 100 m free field, up to 30 m indoors

Battery: 1 lithium button cell (CR 2450)

Display elements: LED for transmission confirmation/programming

- ▣ **Receiver:** All receivers of the Merten CONNECT radio system.
- ▣ **Contents:** Battery, retaining plate, double-sided adhesive strips, single-sided adhesive foils aluminium-coloured, screws, dowels.

Version	Art. no.	PU	PG	Info
Thermoplastic brilliant				
white	507244	1/40	8	
polar white	507219	1/40	8	
aluminium	507260	1/40	8	
metallic				
varnished stainless steel	507246	1/40	8	



CONNECT radio transmitter flush-mounted, 4-gang

Battery-powered radio transmitter for connecting up to 4 floating switch contacts (e.g. standard push-buttons). For the remote control of other receivers from the Merten CONNECT radio system via push-buttons from the Merten switch ranges. Automatic recognition of the connected devices, like for example sensor, switch or push-button. Suitable for installation underneath push-button inserts or in empty flush-mounted boxes.

Channels: 4

Range: up to 100 m (free field)
up to 30 m (building)

Battery: 1 lithium button cell (CR 2450)

Display elements: LED for send confirmation

Dimensions: 43 x 41 x 14 mm (H x W x D)

▶ **Receiver:** All receivers of the Merten CONNECT radio system.

Version	Art. no.	PU	PG	Info
	506004	1/100	8	

CONNECT radio system, switching/dimming

CONNECT radio sensor cover for dimmer inserts

For System M.

Operator button to toggle or switch/dim an output. Manual operation and remote control possible via Merten CONNECT radio system transmitters.

Radio features: **Router**

In connection with the CONNECT radio configurator, the sensor cover can activate the insert itself as well as additional devices when used locally.

Functions:

Switch on, switch off, toggle, scene, dimming.

▶ **To be completed with:** Universal super dimmer insert, art. no. 577099 from version 3A.

Transmitter: All transmitters of the Merten CONNECT radio system.

Version	Art. no.	PU	PG	Info
---------	----------	----	----	------

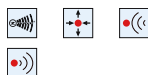
▶ Thermoplastic brilliant

white, glossy	503644	1/100	8	
polar white, glossy	503619	1/100	8	
active white, glossy	503625	1/100	8	

▶ Thermoplastic classy matt

white	502644	1/100	8	
polar white	502619	1/100	8	
anthracite	502614	1/100	8	
aluminium	502660	1/100	8	

▶ **Duroplastic, highly scratch-resistant: With this article, use thermoplastic brilliant**



CONNECT radio sensor cover for dimmer inserts

For System Design.

Operator button to toggle or switch/dim an output. Manual operation and remote control possible via Merten CONNECT radio system transmitters.

Radio features: **Router**

In connection with the CONNECT radio configurator, the sensor cover can activate the insert itself as well as additional devices when used locally.

Functions:

Switch on, switch off, toggle, scene, dimming.

▶ **To be completed with:** Universal super dimmer insert, art. no. 577099 from version 3A.

Transmitter: All transmitters of the Merten CONNECT radio system.

Version	Art. no.	PU	PG	Info
---------	----------	----	----	------

▶ Thermoplastic brilliant

white	504644	1/100	8	
polar white	504619	1/100	8	
aluminium	504660	1/100	8	

▶ metallic

varnished stainless steel	504646	1/100	8	
---------------------------	---------------	-------	---	--



Universal super dimmer insert

AC 230 V

For ohmic, inductive and capacitive loads, e.g. incandescent lamps, dimmable wound transformers or electronic transformers.

Phase control or phase alignment

The universal dimmer automatically recognises the connected load. Do not connect any mixed loads.

With memory function, can be switched off.

Neutral conductor: not required (2 conductor system)

▶ **To be completed with:** Sensor cover, art. no. System M 5776..., 5701..., 5704..., System Basis 5741..., System Design 5737..., OCTOCOLOR 5742.. or TELE sensor cover, art. no. System M 5779..., 5703..., 5711..., System Basis 5748..., System Design 5709..., OCTOCOLOR 5749... In the TRANCENT range with control electronics, 1-gang, art. no. 569090 and TRANCENT glass sensor covers, art. no. 5691..., 5692..., 5693..., 5695... Central plate comfort rotating regulator for Universal super dimmer insert, art. no. System M 5678..., 5677... In the CONNECT radio system with the CONNECT sensor cover for dimmer inserts art. No. System M 5036..., 5026..., System Design 5046...

Extension unit operation: With mechanical push-buttons. With extension insert, art. no. 573999, extension TELE insert, art. no. 573998.

▶ **Technical Information:** Universal dimmer; Electronic sensor switch; TRANCENT functions and device overview; Radio receiver for flush mounting

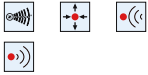
▶ **Note:** The insert from version 3A only can be used in conjunction with the CONNECT radio system.

Version	Art. no.	PU	PG	Info
25-420 VA	577099	1/50	8	



CONNECT radio sensor cover, for switch inserts

For System M.
Operator button for switching an output. Manual operation and remote control possible via Merten CONNECT radio system transmitters.



Radio features: **Router**
In connection with the CONNECT radio configurator, the sensor cover can activate the insert itself as well as additional devices when used locally.

Functions:
Switch on, switch off, toggle, scene.

- To be completed with:** Relay switch insert, art. no. 576897. Electronic switch insert, art. no. 576799 from version 2A.

Transmitter: All transmitters of the Merten CONNECT radio system.

Version	Art. no.	PU	PG	Info
Thermoplastic brilliant				
white, glossy	503444	1/100	8	
polar white, glossy	503419	1/100	8	
active white, glossy	503425	1/100	8	

Thermoplastic classy matt				
white	502444	1/100	8	
polar white	502419	1/100	8	
anthracite	502414	1/100	8	
aluminium	502460	1/100	8	

- Duroplastic, highly scratch-resistant:** With this article, use thermoplastic brilliant



CONNECT radio sensor cover, for switch inserts

For System Design.
Operator button for switching an output. Manual operation and remote control possible via Merten CONNECT radio system transmitters.



Radio features: **Router**
In connection with the CONNECT radio configurator, the sensor cover can activate the insert itself as well as additional devices when used locally.

Functions:
Switch on, switch off, toggle, scene.

- To be completed with:** Relay switch insert, art. no. 576897. Electronic switch insert, art. no. 576799 from version 2A.

Transmitter: All transmitters of the Merten CONNECT radio system.

Version	Art. no.	PU	PG	Info
Thermoplastic brilliant				
white	504444	1/100	8	
polar white	504419	1/100	8	
aluminium	504460	1/100	8	

metallic				
varnished stainless steel	504446	1/100	8	



Relay switch insert

AC 230 V

For ohmic and complex loads such as incandescent lamps, fluorescent lamps, energy-saving lamps, LV halogen lighting etc.



Switching capacity: 0-1000 VA

Capacitive load: max. 140 µF

Neutral conductor: required (3 conductor system)

- To be completed with:** ARGUS 180 flush-mounted sensor module, art. no. System M 5755..., 5784..., System Basis 5782..., System Design 5786..., OCTOCOLOR 5753..., AQUADESIGN 5781... ARGUS 180 flush-mounted sensor module with switch, art. no. System M 5728..., 5785..., System Basis 5783..., System Design 5795..., OCTOCOLOR 5756... ARGUS 180/2.20 m flush-mounted sensor module, art. no. System M 5688..., 5687... In the radio system with sensor cover with radio receiver for switch insert, art. no. 5932..., 5933... In the CONNECT radio system with the CONNECT sensor cover for switch inserts art. no. System M 5034..., 5024..., System Design 5044...

Technical Information: ARGUS flush-mounted devices overview; Radio receiver for flush mounting

- Note:** Replace the relay switch insert, art. no. 576899.

Version	Art. no.	PU	PG	Info
0-1000 VA	576897	1/50	8	



Electronic switch insert

AC 230 V

For ohmic load such as incandescent lamps, 230 V halogen lamps.



Switching capacity: 40-300 W

Neutral conductor: not required (2 conductor system)

- To be completed with:** ARGUS 180 flush-mounted sensor module, art. no. System M 5755..., 5784..., System Basis 5782..., System Design 5786..., OCTOCOLOR 5753..., AQUADESIGN 5781... ARGUS 180 flush-mounted sensor module with switch, art. no. System M 5728..., 5785..., System Basis 5783..., System Design 5795..., OCTOCOLOR 5756... ARGUS 180/2.20 m flush-mounted sensor module, art. no. System M 5688..., 5687... In the radio system with sensor cover with radio receiver for switch insert, art. no. 5932..., 5933... In the CONNECT radio system with the CONNECT sensor cover for switch inserts art. no. System M 5034..., 5024..., System Design 5044...

Technical Information: ARGUS flush-mounted devices overview; Radio receiver for flush mounting

- Note:** A maximum of two electronic switch inserts may be wired in parallel. The sensor cover with radio receiver for switch inserts, art. no. 5932..., 5933.. can be used from version 1A with the electronic switch insert, art. no. 576799. The insert from version 2A only can be used in conjunction with the CONNECT radio system.

Version	Art. no.	PU	PG	Info
40-300 W	576799	1/50	8	



CONNECT radio receiver, flush-mounted, 1-gang switch

For switching loads via a make contact. Can be remote-controlled via transmitters in the Merten CONNECT system.

Radio features: **Router**

Suitable for installation in a ceiling socket-outlet, in a flush-mounted box or on a ceiling hook..

Functions:

Switch on, switch off, toggle, push-button operation.

Nominal voltage: AC 230 V

Nominal current: 10 A

Connected loads:

Incandescent lamps: AC 230 V, 2000 W

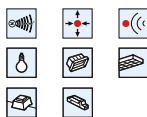
Halogen lamps: AC 230 V, 2000 W

Fluorescent lamps: 1200 W

Capacitive load: 35 µF

Dimensions: 48 x 48 x 23 mm (H x W x D)

Display elements: LED



▣ **Transmitter:** All transmitters of the Merten CONNECT radio system.

Version	Art. no.	PU	PG	Info
	507001	1/60	8	



CONNECT radio plug adapter, switch

AC 230 V, 50 Hz

For switching external loads with SCHUKO plug.

Radio features: **Router**

Manual operation via the sensor surface and remote control possible via Merten CONNECT radio system transmitters.

Functions:

Switch on, switch off, scene.

Nominal voltage: AC 230 V, 50 Hz

Nominal current: 16 A, $\cos\phi = 1$

Incandescent lamps: AC 230 V, max. 2000 W

Halogen lamps: AC 230 V, max. 2000 W

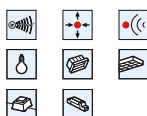
Capacitive load: max. 35 µF

Dimensions: 120x65x38 mm (HxWxD)

Display elements: LED for status display

Operating elements: Sensor surface for local operation and programming

Type of protection: IP 20



▣ **Transmitter:** All transmitters of the Merten CONNECT radio system.

Version	Art. no.	PU	PG	Info
polar white	508519	1/16	8	



CONNECT radio plug adapter, universal dimmer

AC 230 V, 50 Hz

For switching and dimming external loads with SCHUKO plug.

Radio features: **Router**

For ohmic, inductive and capacitive loads, e.g. incandescent lamps, dimmable wound transformers and electronic transformers.

(Phase control or phase alignment).

Manual operation via the sensor surface and remote control possible via Merten CONNECT radio system transmitters.

The integrated universal dimmer automatically recognises the connected load. Do not connect any mixed loads.

With memory function, can be switched off.

Functions:

Switch on, switch off, dim, scene.

Nominal voltage: AC 230 V, 50 Hz

Minimum load: 40 VA

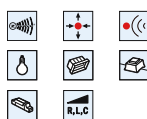
Maximum load: 350 VA

Dimensions: 120x65x38 mm (HxWxD)

Display elements: LED for status display

Operating elements: Sensor surface for local operation and programming

Type of protection: IP 20

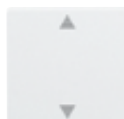


▣ **Transmitter:** All transmitters of the Merten CONNECT radio system.

■ **Technical Information:** Universal dimmer

Version	Art. no.	PU	PG	Info
polar white	508619	1/16	8	

CONNECT radio system, roller shutter



CONNECT radio roller shutter push-button with sensor connection

For System M.

Operating button for roller shutter motors. Manual operation and remote control possible via Merten CONNECT radio system transmitters. With electronic locking device.

Possible to connect sun/twilight sensor.

Radio features: **Router**

In connection with the CONNECT radio configurator, the roller shutter push-button can activate the insert itself as well as additional devices when used locally.

A screw terminal on the blind control insert connects the sensor cable with the roller shutter push-button. Brightness value of sun sensor set to approx. 20000 lux.

Functions:

Radio: Roller shutter UP, DOWN, stop

▣ **To be completed with:** Blind control insert, art. no. 580698, 580699.

Accessories: Sun/twilight sensor, art. no. 580691.

Transmitter: All transmitters of the Merten CONNECT radio system.

Version	Art. no.	PU	PG	Info
---------	----------	----	----	------

▣ Thermoplastic brilliant

white, glossy	503544	1/60	8	
polar white, glossy	503519	1/60	8	
active white, glossy	503525	1/60	8	

▣ Thermoplastic classy matt

white	502544	1/60	8	
polar white	502519	1/60	8	
anthracite	502514	1/60	8	
aluminium	502560	1/60	8	



CONNECT radio roller shutter push-button with sensor connection

For System Design. Operating button for roller shutter motors. Manual operation and remote control possible via Merten CONNECT radio system transmitters. With electronic locking device.

Possible to connect sun/twilight sensor.

Radio features: **Router**

In connection with the CONNECT radio configurator, the roller shutter push-button can activate the insert itself as well as additional devices when used locally.

A screw terminal on the blind control insert connects the sensor cable with the roller shutter push-button. Brightness value of sun sensor set to approx. 20000 lux.

Functions:

Radio: Roller shutter UP, DOWN, stop

- ▣ **To be completed with:** Blind control insert, art. no. 580698, 580699.

Accessories: Sun/twilight sensor, art. no. 580691.

Transmitter: All transmitters of the Merten CONNECT radio system.

Version	Art. no.	PU	PG	Info
▣ Thermoplastic brilliant				
white	504544	1/60	8	
polar white	504519	1/60	8	
aluminium	504560	1/60	8	
▣ metallic				
varnished stainless steel	504546	1/60	8	



Standard blind control insert

AC 230 V, 50 Hz

For local control of a blind/roller shutter motor with limit switch. Motor protection through interlocked relay contacts. Without extension input.

Nominal voltage: AC 230 V, 50 Hz

Neutral conductor: required

Switching capacity: max. 1 motor 1000 W

Outputs: 2 make contacts (interlocked)

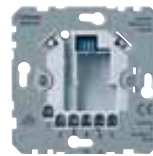
Pulse duration: 2 minutes

Connecting terminals: Screw terminals for max. 2.5 mm² or 2x1.5 mm²

- ▣ **To be completed with:** Blind push-buttons and blind time switches for the blind control system. In the CONNECT radio system with the CONNECT radio roller shutter push-button with sensor connection art. No. System M 5035..., 5025..., System Design 5045...

- ▣ **Technical Information:** Standard blind control insert, art. no. 580698

Version	Art. no.	PU	PG	Info
1000 W	580698	1/50	8	



Blind control insert with extension input

AC 230 V, 50 Hz

For controlling a blind/roller shutter motor with limit switch.

A mechanical roller shutter switch/push-button or an additional blind control insert can be connected via the extension input to implement group/central control. Wind alarm function possible with extension input. Motor protection through interlocked relay contacts.

Nominal voltage: AC 230 V, 50 Hz

Neutral conductor: required

Switching capacity: max. 1 motor 1000 VA

Outputs: 2 make contacts (interlocked)

Reversing time: minimum 500 ms

Connecting terminals: Screw terminals for max. 2.5 mm² or 2x1.5 mm²

- ▣ **To be completed with:** Blind push-buttons and blind time switches for the blind control system. In the CONNECT radio system with the CONNECT radio roller shutter push-button with sensor connection art. No. System M 5035..., 5025..., System Design 5045...

Accessories: Wind sensor interface, art. no. 580693.

- ▣ **Technical Information:** Blind control insert with extension input, art. no. 580699

- ▣ **Note:** In combination with the standard blind time switch, art. no. 5809..., 5859..., 5839..., 5819..., the extension input does not work.

Version	Art. no.	PU	PG	Info
1000 VA	580699	1/50	8	

CONNECT radio system, heating



CONNECT radio valve drive for heaters, comfort/standby

Heating thermostat for manually adjusting the desired room temperature in situ. Additionally it is possible to reduce/increase the temperature by 4 °C by radio via the CONNECT radio central unit. With limitation facility of the mechanical adjusting range.

Thermostat head is suitable for Heimeier valves M 30 x 1.5.

Operating elements: Programming button, key for toggling between comfort/standby

Display elements: Comfort (Sun), standby (Moon)

Battery: 2 Mignon 1.5 V (IEC LR 6, AA)

Battery service life: approximately 2 heating periods

Temperature range: 8 - 28 °C

- ▣ **Transmitter:** CONNECT radio central unit, merten@home, colour art. no. 5059...

- ▣ **Further thermostat heads available on request.**

Version	Art. no.	PU	PG	Info
polar white	509201	1/10	8	

merten

Merten GmbH & Co. KG
P.O. Box 100653
D-51606 Gummersbach, Germany
Tel. +49 2261 702 -203
Fax +49 2261 702-328
export@merten.de
www.merten.com

