

surface-mounting wiring accessories



860 01



860 31



860 40

Pack	Cat.Nos	Switches
10	860 01	Two-way switch 10 AX - 250 V~
10	860 06	Push-button - NO - 6 A - 250 V~
Socket outlets		
10	860 31	2P+E socket outlet German standard 16 A - 250 V~ shuttered for child safety
10	860 29	2P+E socket outlet German standard 16 A - 250 V~
TV socket		
10	860 40	TV single socket - 0 - 2400 MHz

When removing the frame, can be installed in DLPlus mini-trunking systems
(p. 854 to 856)

cable guide and mini-trunking with adhesive



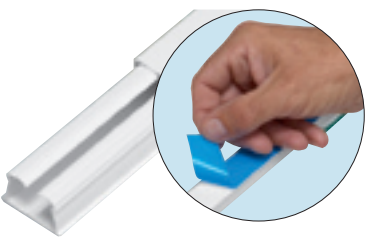
300 98



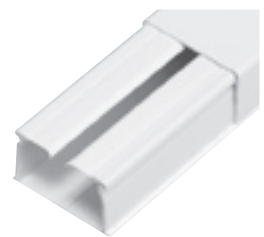
300 99



6489 00



6489 01



6489 03

Pack	Cat.Nos	Cable guide with adhesive
132	300 98 ⁽¹⁾	For cable Ø3 to 6 mm
90	300 99 ⁽¹⁾	For cable Ø7 and 9 mm

This cable guide is used to rapidly attach a cable to a wall without damaging it. It is equipped with a double base insulating the nail or the staple from the cable. 2 mounting systems are provided:
 - nail or staple mounting
 The base is pre-drilled every 10 cm
 - adhesive foam mounting: foam base equipped with a self-adhesive film (1 mm thick)
 Length: 2.10 m
 Supplied with cover
 Material: PVC

Pack	Cat.Nos	Mini-trunking with adhesive
96	6489 00 ⁽¹⁾	16 x 16 mm without partition
60	6489 01 ⁽¹⁾	25 x 16 mm without partition
36	6489 02 ⁽¹⁾	40 x 16 mm without partition
36	6489 03 ⁽¹⁾	40 x 25 mm without partition

This mini-trunking is used to rapidly attach a cable to a wall without damaging it. Supplied with cable-grip
 Color: white RAL 903
 Length: 3 m



Fixing devices for conduits and cables

see p. 754-755

(1) Number of metres in pack