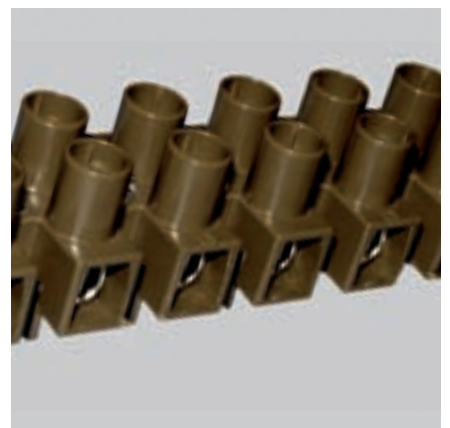
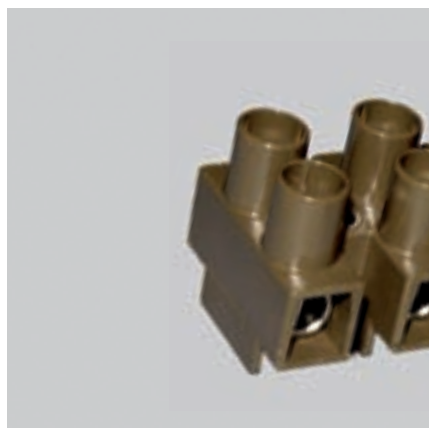
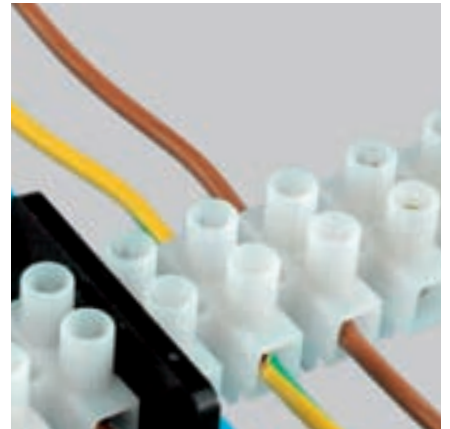




WIRE CONNECTORS

Terminal Blocks and Other Connectors





Wire Connectors

Applications

For use as connectors in various types of electrical equipment.

Insulation Material (Body)

1. Polyamide 6, self-extinguishing plastic according to UL 94: V2, tracking index (KB > 600) in accordance with VDE 0303. Temperature resistance 100°C in continuous operation, temporarily 140°C.
2. PPS plastic. In continuous operation temperature resistance of the terminal blocks is 200°C. Self-extinguishing plastic according to UL 94: V0.

Inserts

Terminal Blocks:

Nickel-plated or tin-plated brass

Printed Circuit Board:

Tin-plated brass

Lighting fixture plug:

Plain brass

Clamping Screws

Zinc- and yellow-chrome plated or zinc- and blue-chrome plated steels screws with rounded ends are now produced according to new RoHS-directive 2002/95/EC. Available also with nickel-plated brass screws.

Wire protector (SP/W) is available for 1,5–16 mm² terminal blocks.

Wire Protector

The wire protector is used in wires with fine core strands to prevent the wire being damaged or inserted too deeply into the connector while eliminating a loss of contact pressure due to vibration or temperature fluctuations. The pressure plate returns to its original position when the cable is removed, thus leaving the hole clear for easy re-insertion.

Available also with barrier type metal inserts.

Different Pole Numbers

12-way terminal blocks can be supplied in cut sections of 1–11 poles.



Terminal Blocks



Temperature resistant terminal blocks are suitable for use especially for internal connections in halogen light fittings.

Code Key

KA 463.06M

KA = without Wire Protector

KB = with Wire protector (SP/W)

Standards

The Terminal Blocks and Wire Connectors shown in this catalogue are approved according to following standards:

EN 60998-1 and EN 60998-2-1 (Europe), UL 1059 and UL 486E (USA) and CSA Std C22.2 No. 158-1987 (Canada). Following European countries have accepted the EN 60998-1 and EN 60998-2-1 standards: Austria, Belgium, the Czech Republic, Denmark, Finland, France, Germany, Greece, Iceland, Ireland, Italy, Luxembourg, the Netherlands, Norway, Portugal, Spain, Sweden, Switzerland, the United Kingdom, Bosnia and Herzegovina, Bulgaria, Croatia, Cyprus, Estonia, Hungary, Lithuania, Latvia, Malta, Poland, Romania, Slovakia, Slovenia, Turkey and Ukraine.

Approvals and Standards

KA/KB	APPROVAL CODE	FI (EUROPE), EN 60998-1, EN 60998-2-1 NOMINAL CROSS SECTION MM ² /VOLTAGE V	UL 1059, UL 486 E
16.12	1616UF	1,5/450	AWG 12-22, 20 A, 300 V
17.12	1616MF	1,5/450	AWG 12-22, 20 A, 600 V
200.12	1542UF	4/450	AWG 10-18, 30 A, 300 V
202.12	1542MF	4/450	AWG 10-18, 30 A, 600 V
241.12	241	4/450	AWG 10-22, 30 A, 300 V
242.12	242	4/450	AWG 10-22, 30 A, 600 V
247.12	241PPS 200 °C	4/450	
248.12	242PPS 200 °C	4/450	
460.12	460	6/450	AWG 8-20, 40 A, 300 V
463.12	463	6/450	AWG 8-20, 40 A, 600 V
612.12	612	16/750	AWG 6-14, 63 A, 600 V

In Russia, terminal blocks have a GOST R 50043.1-92 certification.

Marking of Terminal Blocks

Customized Markings

Terminal blocks can also be marked with desired markings. Markings are stamped on the "chimneys". On request the markings can also be on the body. This must be informed in order. When ordering Terminal Blocks with markings, add the letter M after the product code.



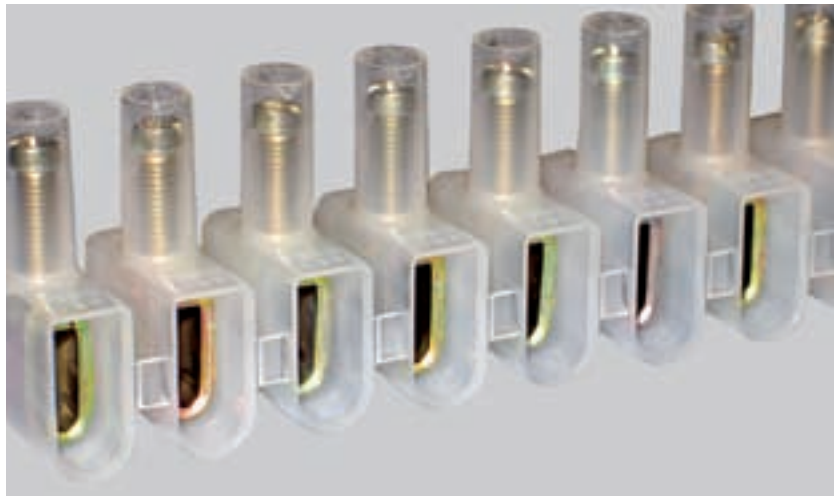
Wire Connectors

By using wire connectors, both solid, stranded and flexible wires can be connected under the same connector screw. The wire connectors that are manufactured as 12-hole blocks can easily be cut without any tools to the desired pole number.

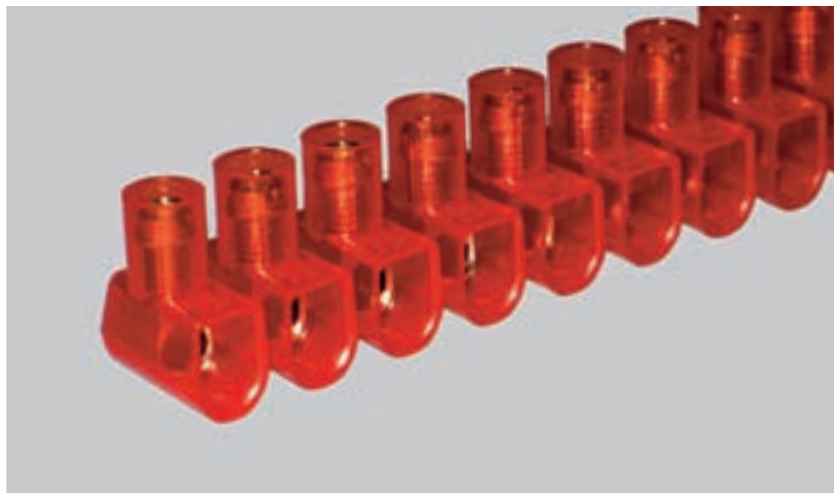
Approvals and Standards

PRODUCT CODE	APPROVAL CODE	FI
		NOMINAL CROSS SECTION MM²/VOLTAGE V
AL 1.12	AL1	2,5/450
AL 2.12	AL2	6/450
AL 13	AL13	16/450
KD 160.12	1617	2,5/450
KD 42001	1630	2 X 2,5/450

The plastic parts of the narrow AL-series wire connectors are of natural coloured polyamide (PA 6). The narrow opening ensures that strands cannot penetrate between the body and the terminal screw when the screw is tightened.



The plastic part of the wire connectors of KD-series is of moulded transparent polycarbonate (PC) to secure the screws and inserts in place.

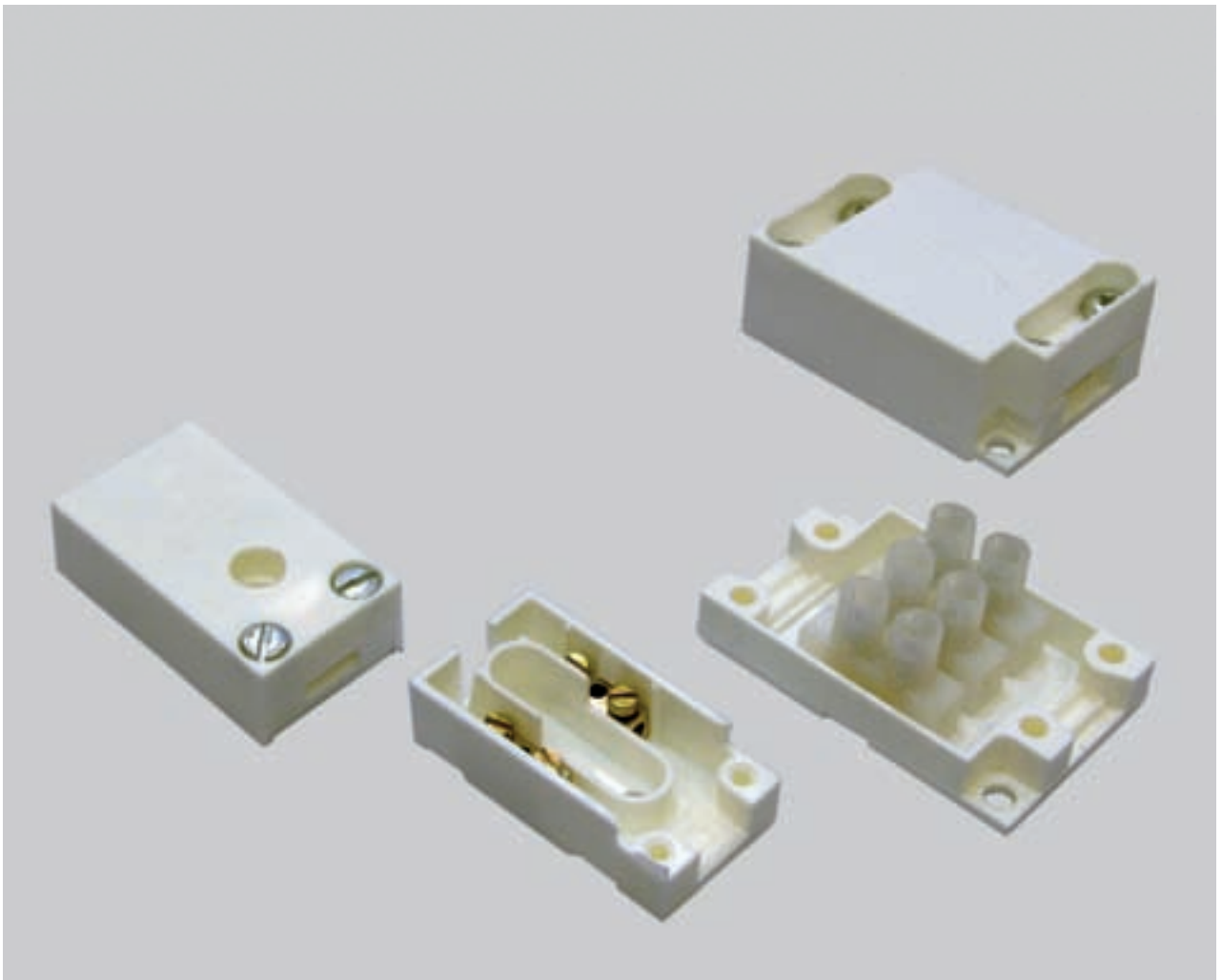


Lighting Connectors

Lighting connectors are suitable for connecting the internal wiring of the light fitting.

Approvals and Standards

PRODUCT CODE	APPROVAL CODE	FI
KD 1302/KD 1202	1634MT/UT	2 X 0,75/250 V
KD 1303/KD 1203	1638MT/UT	3 X 1/450 V



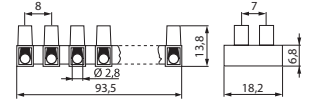
TERMINAL BLOCKS

1,5 mm²

Terminal block without and with foot. Mounting hole \varnothing 2,8 mm. Terminal screw M 2,6. The tightening torque 0,3–0,5 Nm.

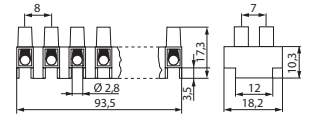
WITHOUT FOOT

ARTICLE	APPROVAL CODE	WIRE PROTECTOR	WEIGHT (G)	PACKAGE QTY
KA 16.12	1616UF-12		18	250
KB 16.12	1616UFSP-12	X	19	250



WITH FOOT

ARTICLE	APPROVAL CODE	WIRE PROTECTOR	WEIGHT (G)	PACKAGE QTY
KA 17.12	1616MF-12		19	250
KB 17.12	1616MFSP-12	X	20	250

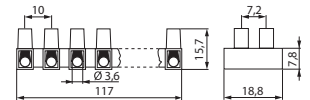


4 mm² (2,5 mm²)

Terminal block without and with foot. Mounting hole \varnothing 3,5 mm. Terminal screw M 3. The tightening torque 0,4–0,6 Nm.

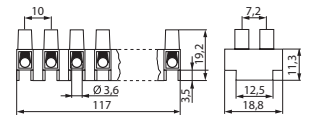
WITHOUT FOOT

ARTICLE	APPROVAL CODE	WIRE PROTECTOR	WEIGHT (G)	PACKAGE QTY
KA 200.12	1542UF-12		28	250
KB 200.12	1542UFW-12	X	29	250



WITH FOOT

ARTICLE	APPROVAL CODE	WIRE PROTECTOR	WEIGHT (G)	PACKAGE QTY
KA 202.12	1542MF-12		30	250
KB 202.12	1542MFW-12	X	31	250



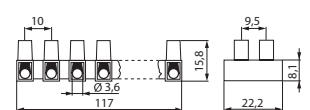
4 mm² (2,5 mm²)

Terminal block without and with foot. Mounting hole \varnothing 3,5 mm. Terminal screw M 3. The tightening torque 0,4–0,6 Nm.

KA/KB 247.12 and KA/KB 248.12 of PPS-material, temperature resistance.

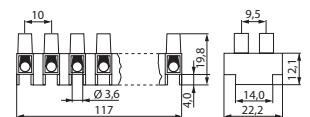
WITHOUT FOOT

ARTICLE	APPROVAL CODE	WIRE PROTECTOR	WEIGHT (G)	PACKAGE QTY
KA 241.12	241-12		32	250
KB 241.12	241SP-12	X	33	250
KA 247.12	P241		39	250
KB 247.12	P241	X	40	250



WITH FOOT

ARTICLE	APPROVAL CODE	WIRE PROTECTOR	WEIGHT (G)	PACKAGE QTY
KA 242.12	242-12		35	250
KB 242.12	242SP-12	X	36	250
KA 248.12	P242		44	250
KB 248.12	P242	X	46	250



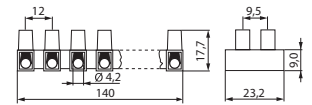
TERMINAL BLOCKS

6 mm²

Terminal block without and with foot. Mounting hole \varnothing 4,2 mm. Terminal screw M 3,5. The tightening moment 0,6–0,8 Nm.

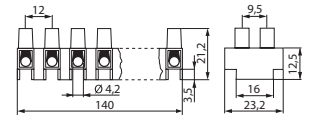
WITHOUT FOOT

ARTICLE	APPROVAL CODE	WIRE PROTECTOR	WEIGHT (G)	PACKAGE QTY
KA 460.12	460-12		46	250
KB 460.12	460SP-12	X	48	250



WITH FOOT

ARTICLE	APPROVAL CODE	WIRE PROTECTOR	WEIGHT (G)	PACKAGE QTY
KA 463.12	463-12		48	250
KB 463.12	463SP-12	X	49	250

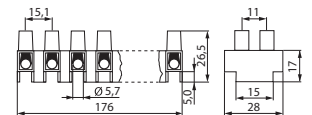


16 mm² (10 mm²)

Terminal block with foot. Mounting hole \varnothing 4,0 mm. Terminal screw M 5. The tightening torque 1,8–2,0 Nm.

WITH FOOT

ARTICLE	APPROVAL CODE	WIRE PROTECTOR	WEIGHT (G)	PACKAGE QTY
KA 612.12	612-12		92	100
KB 612.12	612SP-12	X	94	100



Terminal Blocks Packages/Number of Poles

(= Volume of the minimum quantity)

ARTICLE	1-POLE	2-POLE	3-POLE	4-POLE	5-POLE	6-POLE	7-POLE	8-POLE	9-POLE	10-POLE	11-POLE	12-POLE
KA 16	5 000	2 000	2 000	2 000	1 000	1 000	500	500	500	500	500	250
KB 16	5 000	2 000	2 000	2 000	1 000	1 000	500	500	500	500	500	250
KA 17	5 000	2 000	1 000	1 000	1 000	1 000	500	500	500	500	500	250
KB 17	5 000	2 000	1 000	1 000	1 000	1 000	500	500	500	500	500	250
KA 200	2 000	2 000	1 000	1 000	500	500	500	500	500	500	500	250
KB 200	2 000	2 000	1 000	1 000	500	500	500	500	500	500	500	250
KA 202	2 000	2 000	1 000	1 000	500	500	500	500	500	500	500	250
KB 202	2 000	2 000	1 000	1 000	500	500	500	500	500	500	500	250
KA 241	5 000	2 000	1 000	1 000	1 000	500	500	500	500	500	500	250
KB 241	5 000	2 000	1 000	1 000	1 000	500	500	500	500	500	500	250
KA 242	5 000	2 000	1 000	1 000	500	500	500	500	250	250	250	250
KB 242	5 000	2 000	1 000	1 000	500	500	500	500	250	250	250	250
KA 460	1 000	1 000	1 000	500	500	250	250	250	250	250	250	250
KB 460	1 000	1 000	1 000	500	500	250	250	250	250	250	250	250
KA 463	1 000	1 000	1 000	500	500	250	250	250	250	250	250	250
KB 463	1 000	1 000	1 000	500	500	250	250	250	250	250	250	250
KA 612	1 000	1 000	500	250	250	250	200	200	150	150	150	100
KB 612	1 000	1 000	500	250	250	250	200	200	150	150	150	100

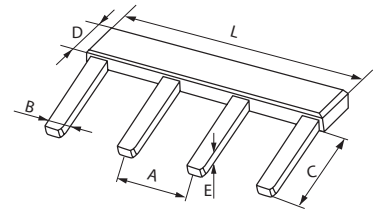
Conditions: The order quantity, which is not dividable equally to the package quantity, will be charged after the valid package charge at each time.

INSTALLATION ACCESSORIES FOR TERMINAL BLOCKS

Cross Connectors

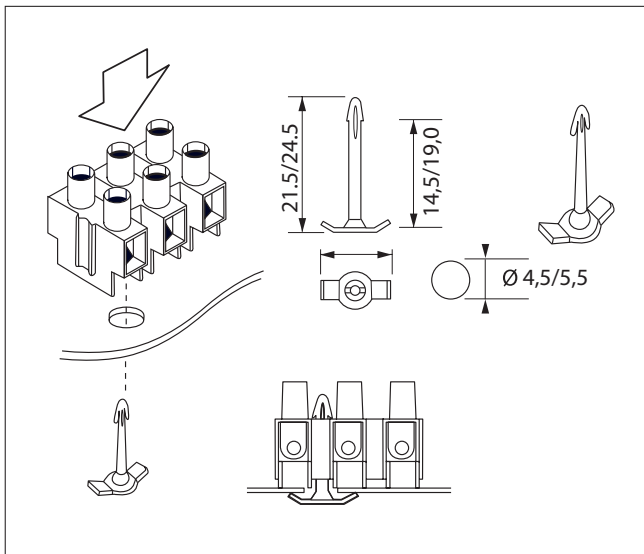
ARTICLE	POLE NUMBER	LENGTH		FOR PRODUCTS	NOMINAL CROSS SECTION MM ²	WEIGHT (G)	PACKAGE QTY
		L					
KRL 1508.02	2	8		KA/KB 16, 17	1.5	0.8	100 / 2 000
KRL 1508.03	3	13			1.5	1.4	100 / 2 000
KRL 1508.04	4	18			1.5	1.9	100 / 2 000
KRL 1508.12	12	58			1.5	6.2	100 / 2 000
KRL 4010.02	2	14		KA/KB 200, 202, 241, 242	4	1.2	100 / 2 000
KRL 4010.03	3	24			4	1.9	100 / 2 000
KRL 4010.04	4	34			4	2.7	100 / 2 000
KRL 6012.02	2	16		KA/KB 460, 463	6	1.3	100 / 2 000
KRL 6012.03	3	28			6	2.1	100 / 2 000
KRL 16015.02	2	20		KA/KB 612	16	1.8	100 / 2 000

ARTICLE	A	B	C	D	E
KRL 1508	8	2	10	5.5	1
KRL 4010	10	3	10	5.5	1
KRL 6012	12	3	10	5.5	1
KRL 16015	15	3	10	5.5	1



Fixing Pins

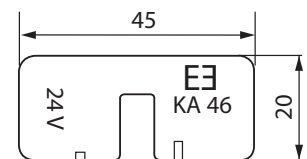
TERMINAL ARTICLE	THICKNESS OF THE		THICKNESS OF THE BASE WITH MARKING PLATE	WEIGHT (G)	PACKAGE QTY
	BLOCK	MOUNTING BASE			
AH 2463 GREY	KA 202.12	1,0–2,8 MM		0.5	1 000 / 10 000
	KA 242.12	0,4–2,0 MM	MAX. 0,7 MM		
	KA 463.12	MAX. 1,7 MM	MAX. 0,6 MM		
AH 2512 BLACK	KA 612.12	MAX. 1,8 MM	MAX. 0,7 MM	0.5	1 000 / 10 000



Spacer Plate

The spacer plate is used for separating different voltage levels. KA 46 is designed for 4–6 mm² terminal blocks with foot.

ARTICLE	WEIGHT	PACKAGE
	(G)	QTY
KA 46	2	100 / 1 000



MARKING OF TERMINAL BLOCKS

Marking Plates

Single and double-sided marking plates in white self-extinguishing PVC are available for 4–16 mm² terminal blocks.

ARTICLE	SINGLE OR DOUBLE	MARKINGS	NOMINAL CROSS SECTION MM ²	FOR PRODUCTS	WEIGHT (G)	PACKAGE QTY
PMK 2612	2	PLAIN	4	241, 242	4	500
PMK 2712	2	{1-12}	4	241, 242	4	500
PMK 2812	1	PLAIN	4	241, 242	2.3	500
PMK 2912	1	{1-12}	4	241, 242	2.3	500
PMK 3012	2	PLAIN	6	460, 463	5	500
PMK 3212	1	PLAIN	6	460, 463	5	500
PMK 4412	2	PLAIN	16	612	8	500
PMK 4512	2	{1-12}	16	612	8	500
PMK 4612	1	PLAIN	16	612	4	500

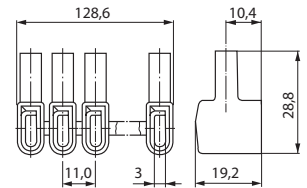


WIRE CONNECTORS

2,5 mm²

Wire connector with a 3 mm wide wire entry and terminal screws M 3,5. The tightening torque 0,8–1,0 Nm. Easy to cut by hand to the desired pole number.

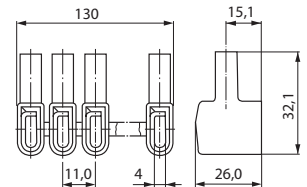
ARTICLE	APPROVAL CODE	RECOMMENDED NUMBER OF WIRES, PCS/MM ²	WEIGHT (G)	PACKAGE QTY
AL1.12	AL1	[2 / 4] [3 / 2,5] [4 / 1,5]	53	10 / 50



6 mm²

Wire connector with a 4 mm wide wire entry and terminal screws M 4,5. The tightening torque 1,8–2,0 Nm. Easy to cut by hand to the desired pole number.

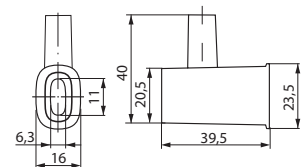
ARTICLE	APPROVAL CODE	RECOMMENDED NUMBER OF WIRES, PCS/MM ²	WEIGHT (G)	PACKAGE QTY
AL2.12	AL2	[2 / 6] [3 / 4] [4 / 2,5]	82	10 / 50



10 mm²

Wire connector with a 5,5 mm wide wire entry and terminal screw M 6. The tightening torque 2,5–2,7 Nm.

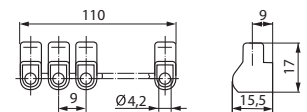
ARTICLE	APPROVAL CODE	RECOMMENDED NUMBER OF WIRES, PCS/MM ²	WEIGHT (G)	PACKAGE QTY
AL13	AL13	[2 / 10] [3 / 6] [4 / 6] [4 / 4]	14	100 / 500



2,5 mm²

Wire connector with a 4,2 mm wide wire entry and terminal screws M 4. The tightening torque 1,2–1,4 Nm. Easy to cut by hand to the desired pole number.

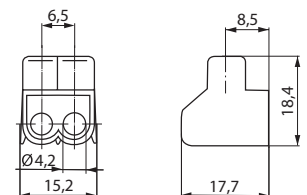
ARTICLE	APPROVAL CODE	RECOMMENDED NUMBER OF WIRES, PCS/MM ²	WEIGHT (G)	PACKAGE QTY
KD 160.01	1617-01	[4 / 1] [3 / 1,5] [2 / 2,5]	2	100 / 1 000
KD 160.12	1617-12	[4 / 1] [3 / 1,5] [2 / 2,5]	25	500



4 mm²

Uncuttable wire connector with two wire entries, 4,2 mm, screw M 4. Ideal for cables with a great number of wires. The tightening torque 1,2–1,4 Nm.

ARTICLE	APPROVAL CODE	RECOMMENDED NUMBER OF WIRES, PCS/MM ²	WEIGHT (G)	PACKAGE QTY
KD 42001	1630	[2 X 2 / 2,5] [2 X 2 / 4] [2 X 3 / 1,5] [2 X 4 / 1]	7	100 / 1 000

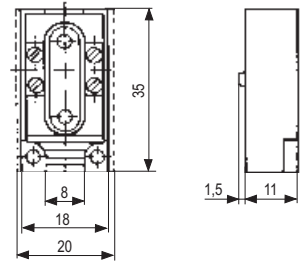


CONNECTORS

Lighting connectors are suitable for connecting the internal wiring of the light fitting to the lead.
The lighting connectors can be manufactured of heat-resistant material on special order.
KD 1302 and KD 1303 have a 1,5 mm high pin in the bottom to permit fixing with one screw only.

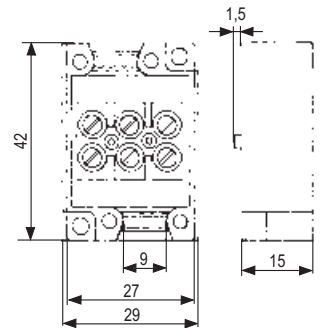
0,75 mm²

ARTICLE	RECOMMENDED NUMBER OF WIRES, PCS/MM ²	PIN	WEIGHT (G)	PACKAGE QTY
KD 1202	(2 X 0,75)		8	100 / 500
KD 1302	(2 X 0,75)	X	8	100 / 500



1 mm²

ARTICLE	RECOMMENDED NUMBER OF WIRES, PCS/MM ²	PIN	WEIGHT (G)	PACKAGE QTY
KD 1203	(3 X 1)		15	100 / 500
KD 1303	(3 X 1)	X	15	100 / 500





BUILDING TECHNOLOGY

ENSTO ELECTRIC OY
VECKJÄRVENTIE 1, P.O.BOX 110
06101 PORVOO, FINLAND
TEL. +358 204 76 21
FAX + 358 204 76 2753
ELECTRIC@ENSTO.COM
WWW.ENSTO.COM