

HUBER+SUHNER FIBER OPTICS

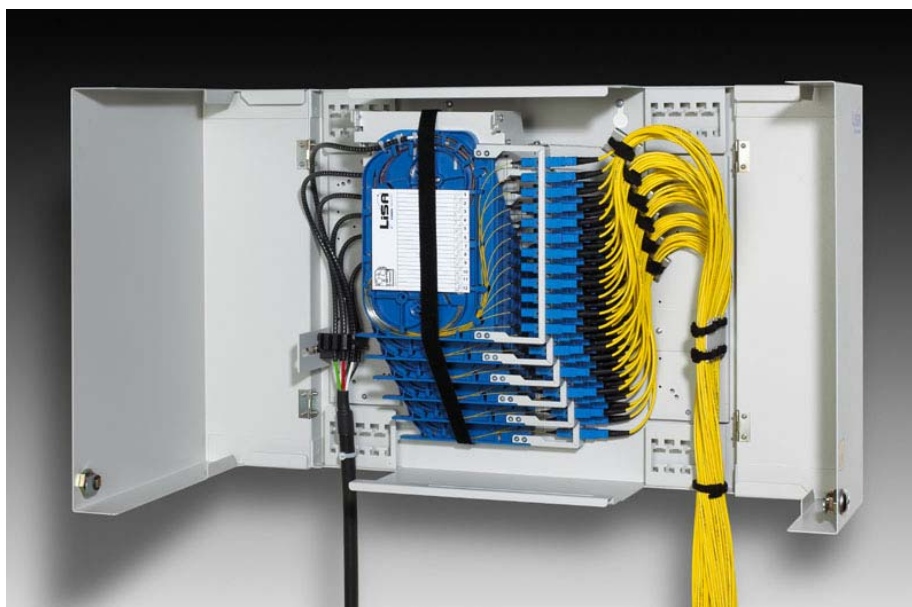


Data sheet



GB Data sheet: Wall Box WBH

D Datenblatt: Wandgehäuse WBH



GB Picture of splice/patch variant

D Abbildung von Variante Spleissung/Rangierung

GB

General Features

- Many different configuration variants of fiber connections
 - Splice variants with fiber trays
 - Every fiber tray is individually accessible for easy fiber access
 - Bend radius limitation throughout
 - Stackable housing
 - Two wardrobe doors with locks and keys
 - Various top or bottom cable entry possibilities
 - Wall mounting on four point fixing
 - For indoor applications
 - Customer/subscriber separation
 - Robust steel construction
- 3 different configurations can be achieved:
- Splice through
 - Splice/Patch
 - Patch through

WAIVER

While the information contained in this folder has been carefully compiled to the best of our present knowledge, it is not intended as representation or warranty of any kind on our part regarding the suitability of the products concerned for any particular use or purpose and neither shall any statement contained herein be construed as a recommendation to infringe any industrial property rights or as a license to use any such rights. The suitability of each product for any particular purpose must be checked beforehand with our specialists.

Document No.: **01.05.L354**
Issued: **28.06.04 / 4960**
Checked/released: **22.11.04 / 4553**

Modification No.: **a**
Last amended:
Page 1 of 8



HUBER+SUHNER AG
Fiber Optics Division
CH-9100 Herisau
Phone +41 (0)71 353 41 11
Fax +41 (0)71 353 46 47
www.hubersuhner.com/lisa



(D)

Generelle Leistungsmerkmale

- Viele verschiedene Konfigurationsvarianten von Faserverbindungen
 - Spleissvarianten mit Mehrfaser-Management
 - Jede Spleisskassette kann für den individuellen Faserzugriff geschwenkt werden
 - Durchgängige Biegeradiusbegrenzung
 - Stapelbares Gehäuse
 - Zwei Türen mit Schloss und Schlüssel
 - Je beidseitig oben- und untenliegende Kabeleingänge
 - Wandbefestigung an vier Punkten
 - Für Innenanwendungen
 - Kunden-/Teilnehmertrennung
 - Robustes Gehäuse
- 3 verschiedenen Konfigurationen möglich:
- Durchspleissung
 - Spleissung/Rangierung
 - Durchrangierung

(GB)

Technical data	Value
Dimensions (WxHxD)	448 x 395 x 148mm
Materials	Housing, tray carriage, angles for brackets and adapter plate steel powder coated; splice cassettes and conduit tubes thermoplastic
Weight	approx. 8kg *
Colors	Housing, tray carriage, angles for brackets and adapter plate light grey (RAL7035); splice cassettes standard blue
Bending radius limitation	30mm for fibers
Order code	See table below

* depending on the configuration

(D)

Technische Daten	Wert
Dimensionen (BxHxT)	448 x 395 x 148mm
Materialien	Gehäuse, Spleisskassettenträger, Haltewinkel und Kupplungsplatte Stahl pulverbeschichtet; Spleisskassetten und Schutzschläuche thermoplastischer Kunststoff
Gewicht	ca. 8kg *
Farben	Gehäuse, Spleisskassettenträger, Haltewinkel und Kupplungsplatte lichtgrau (RAL7035); Spleisskassetten Standard blau
Biegeradiusbegrenzung	30mm für Fasern
Bestellcode	Siehe untenstehende Tabelle

* abhängig von der Konfiguration

WAIVER

While the information contained in this folder has been carefully compiled to the best of our present knowledge, it is not intended as representation or warranty of any kind on our part regarding the suitability of the products concerned for any particular use or purpose and neither shall any statement contained herein be construed as a recommendation to infringe any industrial property rights or as a license to use any such rights. The suitability of each product for any particular purpose must be checked beforehand with our specialists.



HUBER+SUHNER AG
Fiber Optics Division
CH-9100 Herisau
Phone +41 (0)71 353 41 11
Fax +41 (0)71 353 46 47
www.hubersuhner.com/lisa

Document No.: **01.05.L354** Modification No.: **a**
Issued: **28.06.04 / 4960** Last amended:
Checked/released: **22.11.04 / 4553** Page 2 of 8

GB Splice Through Variant

D Variante Durchsplessung



GB Specific Features

- Allows six fiber trays to be mounted
- Maximum 72 splices
- Hinged fiber trays for instant fiber access

D Spezielle Merkmale

- Erlaubt die Montage von sechs Spleisskassetten
- Maximum 72 Spleisse
- Gelenkig gelagerte Spleisskassetten für direkten Faserzugriff

GB Patch Through Variant

Specific Features

- Max. 72 fiber connections, resp. 144 with SFF connectors
- For direct connection with MASTERLINE and/or patchcords
- Snap-in MASTERLINE-gland design for fast installation

D Variante Durchrangierung

Spezielle Merkmale

- Max. 72 Faserverbindungen, resp. 144 mit SFF-Steckverbindern
- For direkte Verbindung mit MASTERLINE und/oder Rangierkabel
- Einfaches Einschieben des MASTERLINE-Verteilerkopfes für schnelle Installation

Splice/Patch Variant

Variante Spleissung/Rangierung



Specific Features

- Allows six fiber trays to be mounted
- Maximum. 72 splices
- Maximum. 144 splices with SFF connectors
- Hinged fiber trays for instant fiber access

Spezielle Merkmale

- Erlaubt die Montage von sechs Spleisskassetten
- Maximum 72 Spleisse
- Maximum 144 Spleisse mit SFF-Steckverbindern
- Gelenkig gelagerte Spleisskassetten für direkten Faserzugriff



WAIVER

While the information contained in this folder has been carefully compiled to the best of our present knowledge, it is not intended as representation or warranty of any kind on our part regarding the suitability of the products concerned for any particular use or purpose and neither shall any statement contained herein be construed as a recommendation to infringe any industrial property rights or as a license to use any such rights. The suitability of each product for any particular purpose must be checked beforehand with our specialists.

Document No.: 01.05.L354
Issued: 28.06.04 / 4960
Checked/released: 22.11.04 / 4553

Modification No.: a
Last amended:
Page 3 of 8

HUBER+SUHNER FIBER OPTICS



Data sheet

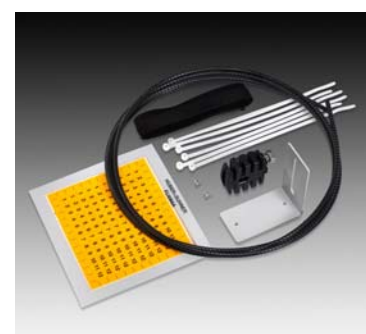


GB

Ordering Code: Splice Through and Splice/Patch	Description
WBH-	Wall Box High Capacity
FTR	Fiber Tray Right Handed
B-	Colour Blue - Standard
Y-	Colour Yellow
G-	Colour Grey
O-	Colour Orange
GN-	Colour Green
A-	Colour Aqua
NX-	No adapter plate for Splice Through applications
20 -	Connector code
nn-	Number of splices per tray (Splice Through) Number of adapters per tray (Splice/Patch) 12=standard
00 -	No pigtails (Splice Through)
09 -	Singlemode 9 μ m
50 -	Multimode 50 μ m
62 -	Multimode 62.5 μ m
A -	Small splice bridge for max 24 x 250 μ m splices (incl. heatshrink splice protectors)
B -	ANT sandwich splice bridge (exkl. sandwich splice protectors)
nn -	Number of Fiber Trays per box, max. 6
B-	Brush strip fitted
WT -	Polypropylene miniflex kit white
A 1	Standard variant

Please note: MASTERLINE and patchcords have to be ordered separately.

Connector code	Type
00	No connector
20	FST-HQ
22	FST-Security
24	FST-LEAN
30	FCPC
33	FCPC APC wide key
34	FCPC APC small key
70	FSC
73	FSC APC 8°
74	FSC APC 9°
77	FSC duplex
78	FSC APC duplex
81	LX.5 duplex
84	LX.5 APC duplex
88	LC duplex
89	LC APC duplex
90	FLSH (E2000)
93	FLSH (E2000) APC



WBH installation kit, example for splice through

Suitable kit is included in the configured box.

WAIVER

While the information contained in this folder has been carefully compiled to the best of our present knowledge, it is not intended as representation or warranty of any kind on our part regarding the suitability of the products concerned for any particular use or purpose and neither shall any statement contained herein be construed as a recommendation to infringe any industrial property rights or as a license to use any such rights. The suitability of each product for any particular purpose must be checked beforehand with our specialists.

Document No.: **01.05.L354**
 Issued: 28.06.04 / 4960
 Checked/released: 22.11.04 / 4553

Modification No.: a
 Last amended:
 Page 4 of 8



HUBER+SUHNER AG
 Fiber Optics Division
 CH-9100 Herisau
 Phone +41 (0)71 353 41 11
 Fax +41 (0)71 353 46 47
www.hubersuhner.com/lisa

HUBER+SUHNER FIBER OPTICS



Data sheet



GB

Ordering Code: Patch Through	Description
WBH-	Wall Box High Capacity
APL -	Adapter Plate fitted
XX -	Connector Code for adapter type
nn -	Number of Adapters, max. 72
SM -	Singlemode Adapters
MM -	Multimode Adapters
0	No bracket required left side (cable fixing with cable ties)
S	Small Bracket left side for small MASTERLINE or PG9 gland
M	Medium Bracket left side for medium MASTERLINE or PG13.5 gland
L	Large Bracket left side for large MASTERLINE
P	Patchcord Guide left side
n-	Number of brackets required left side (maximum 2)
/0	No bracket required right side (cable fixing with cable ties)
/S	Small Bracket right side for small MASTERLINE or PG9 gland
/M	Medium Bracket right side for medium MASTERLINE or PG13.5 gland
/L	Large Bracket right side for large MASTERLINE
/P	Patchcord Guide right side
- n	Number of brackets required right side (maximum 2)
- B	Brush strip entry
- A1	Standard variant

Please note: MASTERLINE and patchcords must be ordered separately.
The above-mentioned brackets fix MASTERLINE classic dividers.

WAIVER

While the information contained in this folder has been carefully compiled to the best of our present knowledge, it is not intended as representation or warranty of any kind on our part regarding the suitability of the products concerned for any particular use or purpose and neither shall any statement contained herein be construed as a recommendation to infringe any industrial property rights or as a license to use any such rights. The suitability of each product for any particular purpose must be checked beforehand with our specialists.

Document No.: **01.05.L354**
 Issued: **28.06.04 / 4960**
 Checked/released: **22.11.04 / 4553**

Modification No.: **a**
 Last amended:
 Page 5 of 8



HUBER+SUHNER AG
 Fiber Optics Division
 CH-9100 Herisau
 Phone +41 (0)71 353 41 11
 Fax +41 (0)71 353 46 47
www.hubersuhner.com/lisa

HUBER+SUHNER FIBER OPTICS



Data sheet

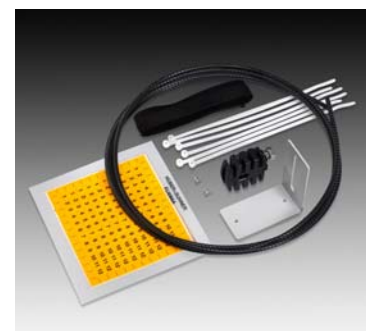


(D)

Bestellcode: Durchspleissung und Spleissung/Rangierung	Beschreibung
WBH-	Wandgehäuse Hohe Kapazität
FTR	Spleisskassette rechtsseitig
B-	blaue Farbe - Standard
Y-	gelbe Farbe
G-	graue Farbe
O-	orange Farbe
GN-	grüne Farbe
A-	türkise Farbe
NX-	keine Kupplungsplatte, für Durchspleissung
20 -	Verbindercode
nn-	Anzahl Spleisse pro Kassette (Durchspleissung), Anzahl Kupplungen pro Kassette (Spleissung/Rangierung), 12=standard
00 -	Kein Pigtails (Durchspleissung)
09 -	Singlemode 9 µm
50 -	Multimode 50 µm
62 -	Multimode 62.5 µm
A -	schmale Spleissbrücke für max 24 x 250 µm -Spleisse (inkl. Schrumpfspleisssschütze)
B -	ANT Sandwich-Spleissbrücke (exkl. Sandwich-Spleisssschütze)
nn -	Anzahl Spleisskassetten per Gehäuse, max. 6
B-	mit Bürstenabschluss
WT -	Polypropylen-Schutzschläuche, weiss
A 1	Standardvariante

Bitte beachte: MASTERLINE und Rangierkabel müssen separat bestellt werden

Verbindercode	Typ
00	Kein Verbinder
20	FST-HQ
22	FST-Security
24	FST-LEAN
30	FCPC
33	FCPC APC breite Nase (wide key)
34	FCPC APC schmale Nase (small key)
70	FSC
73	FSC APC 8°
74	FSC APC 9°
77	FSC-Duplex
78	FSC APC-Duplex
81	LX.5-Duplex
84	LX.5 APC-Duplex
88	LC-Duplex
89	LC APC-Duplex
90	FLSH (E2000)
93	FLSH (E2000) APC



WBH Installationsset, Beispiel für Durchspleissung

Entsprechendes Set ist im konfigurierten Gehäuse enthalten.

WAIVER

While the information contained in this folder has been carefully compiled to the best of our present knowledge, it is not intended as representation or warranty of any kind on our part regarding the suitability of the products concerned for any particular use or purpose and neither shall any statement contained herein be construed as a recommendation to infringe any industrial property rights or as a license to use any such rights. The suitability of each product for any particular purpose must be checked beforehand with our specialists.

Document No.: 01.05.L354
 Issued: 28.06.04 / 4960
 Checked/released: 22.11.04 / 4553

Modification No.: a
 Last amended:
 Page 6 of 8



HUBER+SUHNER AG
 Fiber Optics Division
 CH-9100 Herisau
 Phone +41 (0)71 353 41 11
 Fax +41 (0)71 353 46 47
 www.hubersuhner.com/lisa



(D)

Bestellcode: Durchrangierung	Beschreibung
WBH-	Gehäuse Hohe Kapazität
APL -	montierte Kupplungsplatte
XX -	Verbindercode für Kupplungstyp
nn -	Anzahl Kupplungen, max. 72
SM -	Singlemode-Kupplungen
MM -	Multimode-Kupplungen
0	kein Halter auf linker Seite (Kabelbefestigung mit Kabelbinder)
S	schmaler Halter auf linker Seite für kleines MASTERLINE oder PG9-Kabelverschraubung
M	mittlerer Halter auf linker Seite für mittleres MASTERLINE oder PG13.5-Kabelverschraubung
L	grosser Halter auf linker Seite für grosse MASTERLINE
P	Rangierkabelhalter auf linker Seite
n-	Anzahl Halter auf linker Seite (maximum 2)
/0	kein Halter auf rechter Seite (Kabelbefestigung mit Kabelbinder)
/S	schmaler Halter auf rechter Seite für kleines MASTERLINE oder PG9-Kabelverschraubung
/M	mittlerer Halter auf rechter Seite für mittleres MASTERLINE oder PG13.5-Kabelverschraubung
/L	grosser Halter auf rechter Seite für grosse MASTERLINE
/P	Rangierkabelhalter auf rechter Seite
-n	Anzahl Halter auf rechter Seite (maximum 2)
-B	mit Bürstenabschluss
-A1	Standardvariante

Bitte beachte: MASTERLINE und Rangierkabel müssen separat bestellt werden.
Die oben genannten Halter befestigen MASTERLINE classic-Aufteilköpfe.

WAIVER

While the information contained in this folder has been carefully compiled to the best of our present knowledge, it is not intended as representation or warranty of any kind on our part regarding the suitability of the products concerned for any particular use or purpose and neither shall any statement contained herein be construed as a recommendation to infringe any industrial property rights or as a license to use any such rights. The suitability of each product for any particular purpose must be checked beforehand with our specialists.

Document No.: **01.05.L354**
Issued: **28.06.04 / 4960**
Checked/released: **22.11.04 / 4553**

Modification No.: **a**
Last amended:
Page **7 of 8**



HUBER+SUHNER AG
Fiber Optics Division
CH-9100 Herisau
Phone +41 (0)71 353 41 11
Fax +41 (0)71 353 46 47
www.hubersuhner.com/lisa

HUBER+SUHNER FIBER OPTICS

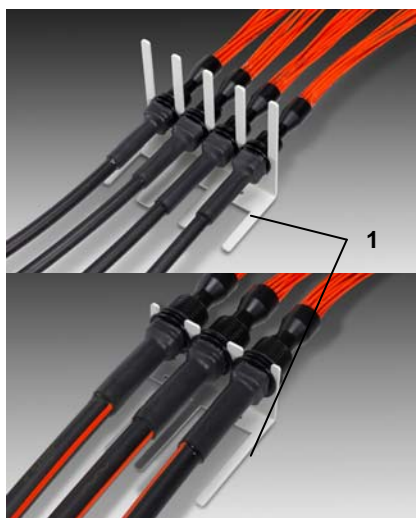


Data sheet



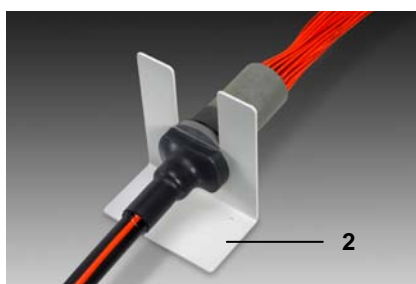
ⓐ Accessories

ⓓ Zubehör



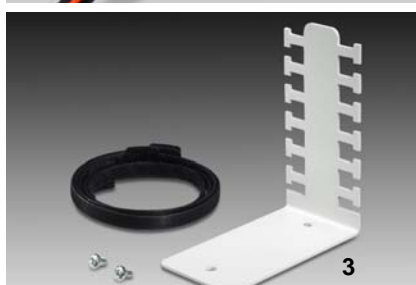
ⓐ

Description	Unit	Part no.
1 MASTERLINE gland bracket, for 12 small or 3 medium MASTERLINE incl. 2 fixing screws WBH-M/S-MGB-3/12-A1	1	84004296
2 MASTERLINE gland bracket, for 2 large MASTERLINE incl. 2 fixing screws WBH-L-MGB-2-A1	1	84004290
3 Patchcord Guide incl. 12 Velcro ties and 2 fixing screws WBH-PCG-STA-A1	1	84004954
4 Bending radius limiter kit for patchcords, radius 35mm, blue incl. fixing screws ODRF-SUBR-BEND-8M/4S-A1	8	84002996



ⓓ

Description	Unit	Part no.
1 MASTERLINE-Halter, für 12 kleine oder 3 mittlere MASTERLINE inkl. 2 Befestigungsschrauben WBH-M/S-MGB-3/12-A1	1	84004296
2 MASTERLINE-Halter, für 2 grosse MASTERLINE inkl. 2 Befestigungsschrauben WBH-L-MGB-2-A1	1	84004290
3 Rangierkabelführung inkl. 12 Klettbinden und 2 Befestigungsschrauben WBH-PCG-STA-A1	1	84004954
4 Umlenker für Rangierkabel Radius 35mm, blau inkl. Befestigungsschrauben ODRF-SUBR-BEND-8M/4S-A1	8	84002996



WAIVER

While the information contained in this folder has been carefully compiled to the best of our present knowledge, it is not intended as representation or warranty of any kind on our part regarding the suitability of the products concerned for any particular use or purpose and neither shall any statement contained herein be construed as a recommendation to infringe any industrial property rights or as a license to use any such rights. The suitability of each product for any particular purpose must be checked beforehand with our specialists.

Document No.: **01.05.L354**
 Issued: **28.06.04 / 4960**
 Checked/released: **22.11.04 / 4553**

Modification No.: **a**
 Last amended:
 Page **8 of 8**



HUBER+SUHNER AG
 Fiber Optics Division
 CH-9100 Herisau
 Phone +41 (0)71 353 41 11
 Fax +41 (0)71 353 46 47
www.hubersuhner.com/lisa