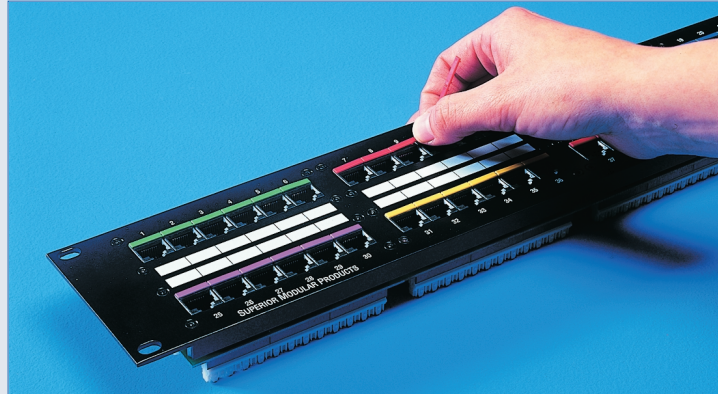


# EFS Category 5e Patch Panel



Part Number: I5Exx/110B01

Cat. 5e Patch Panel



xx - Denotes number of ports

## PRODUCT DESCRIPTION:

Superior Modular Products, Extended Frequency System (EFS™) Patch Panel 568A or 568B wiring, enhance the highest level of headroom to any Category 5e link or channel.

Patented, high-performance / Cross-talk elimination (US Patented 5,299,956). High density profile, write-on port labels, 110 Connecting blocks for rear termination. 110 punch-down tool recommended for termination.

### Technical Characteristics:

- Jack Style Unkeyed RJ45
- Contacts Phosphor Bronze / IEC-603-7 Level A
- Plating 50 µin of Gold over 100 µin Nickel
- IDC 110 Style IDC
- IDC Contact Phosphor Bronze / Durability TIA/EIA 568B.2

## INCLUDED:

EFS™ High Speed Data Patch Panel,  
Cable Ties and Instruction sheet.

## APPLICATION SUPPORT LIST

- Voice
- 4/16 Mbps Token Ring
- 100 VG Any LAN
- 100 Mbps TP-PMD
- 155/622 Mbps ATM
- 10BASE-T Ethernet
- 100BASE-TX Fast Ethernet
- 1000BASE-T Gigabit Ethernet
- Broadband video
- All other applications developed for operation over category 5e or new class D cabling

## TESTING COMPLIANCE:

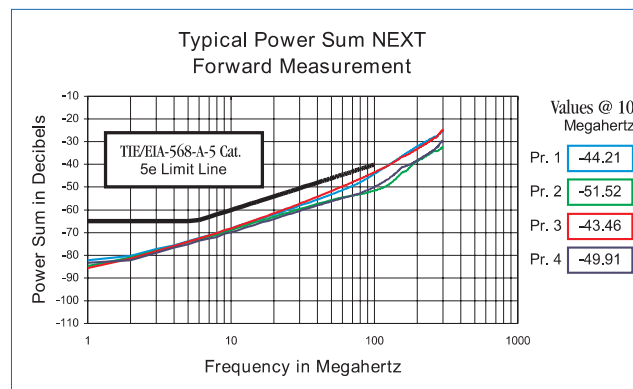
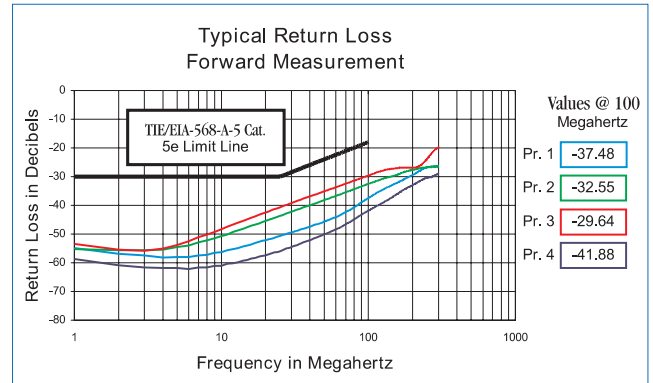
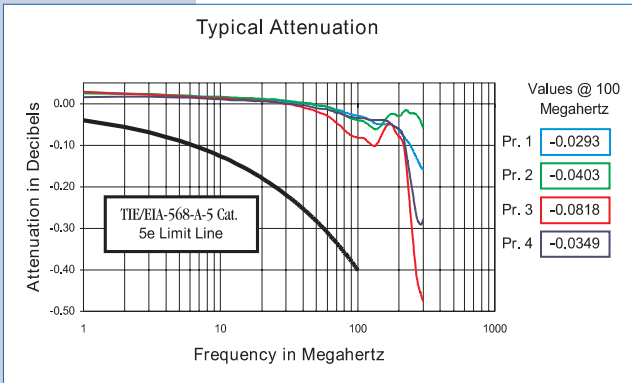
- ANSI/TIA/EIA-568-A
- ANSI/TIA-EIA-568-A-2
- ANSI/TIA-EIA-568-A-5
- ISO/IEC 11801 - 2000 2<sup>nd</sup> edition
- ANSI/TIA/EIA-568-B.2 Category 5e

# EFS Category 5e Patch Panel



## CATEGORY 5e PANEL MODULE TRANSMISSION PERFORMANCE

SPECIFICATION SHEET



### Typical Attenuation

	1 MHz	4 MHz	8 MHz	10 MHz	16 MHz	20 MHz	25 MHz	31 MHz	63 MHz	100 MHz
<b>Pair 1</b>	0.0274	0.0209	0.0160	0.0157	0.0122	0.0097	0.0083	0.0046	-0.0096	-0.0293
<b>Pair 2</b>	0.0250	0.0209	0.0168	0.0173	0.0131	0.0111	0.0104	0.0072	-0.0100	-0.0403
<b>Pair 3</b>	0.0281	0.0192	0.0144	0.0135	0.0091	0.0060	0.0037	-0.0006	-0.0331	-0.0818
<b>Pair 4</b>	0.0153	0.0157	0.0120	0.0108	0.0067	0.0050	0.0040	-0.0001	-0.0167	-0.0349

### Typical Return Loss Forward Measurements

	1 MHz	4 MHz	8 MHz	10 MHz	16 MHz	20 MHz	25 MHz	31 MHz	63 MHz	100 MHz
<b>Pair 1</b>	-54.96	-58.15	-57.20	-56.31	-53.55	-52.15	-50.68	-49.22	-43.57	-37.48
<b>Pair 2</b>	-55.29	-55.45	-52.25	-50.69	-47.17	-45.44	-43.67	-41.98	-36.37	-32.55
<b>Pair 3</b>	-53.49	-55.02	-50.12	-48.29	-44.39	-42.50	-40.66	-38.91	-33.31	-29.64
<b>Pair 4</b>	-58.73	-61.78	-61.58	-61.03	-58.57	-57.51	-55.92	-54.27	-47.88	-41.88

### Typical Power Sum Near End Crosstalk Forward Measurements

	1 MHz	4 MHz	8 MHz	10 MHz	16 MHz	20 MHz	25 MHz	31 MHz	63 MHz	100 MHz
<b>Pair 1</b>	-82.25	-75.61	-70.35	-68.31	-64.04	-62.11	-59.91	-57.84	-50.77	-44.21
<b>Pair 2</b>	-84.75	-76.15	-70.91	-68.92	-65.04	-63.16	-61.16	-59.32	-54.35	-51.52
<b>Pair 3</b>	-85.60	-75.90	-70.33	-68.17	-63.57	-61.55	-59.27	-56.94	-49.10	-43.46
<b>Pair 4</b>	-83.39	-76.70	-71.94	-69.91	-65.79	-64.01	-62.07	-60.22	-54.48	-49.91