

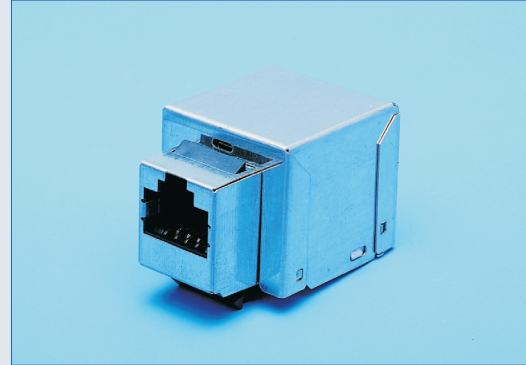
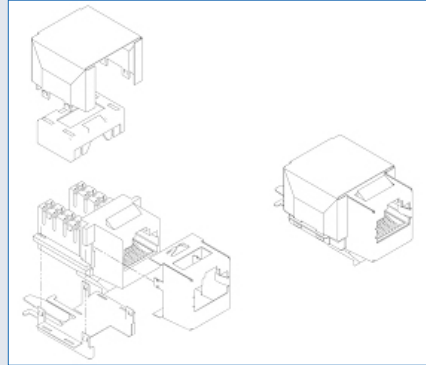
KMJ – Keystone Modular Jack

Category 6 – Shielded Keystone Jack



Part Number : KMJSIX8B02S

Shielded PC Board Keystone Jack



SPECIFICATION SHEET

PRODUCT DESCRIPTION:

SMP's Access 6™ Shielded Keystone Jack 568A or 568B offers enhanced Cat. 6 performance AND FULLY SHIELDED features. 110 IDC connectors provide a direct punch-down for termination (110 punch-down tool recommended).

Fits any Keystone port opening 14,7x20mm faceplates. Fully shielded construction includes a removable metal cover, protecting against EMI and RFI emission and double crimp support to ensure optimum screen continuity and cable retention.

Support for ATM 155, ATM 622, 100Base-TX, and Gigabit Ethernet (IEEE 802.3ab pending). Modular jack contacts meet requirements of IEC 603-7 after being over stressed by 6 position modular plug. IDC contacts meet durability requirements of TIA 568-A with 26 AWG stranded through 22 AWG solid conductors. Maximum insulation diameter .045".

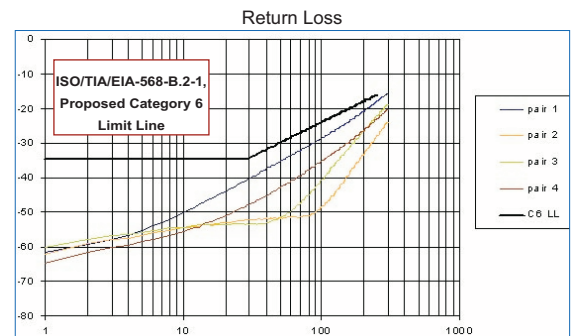
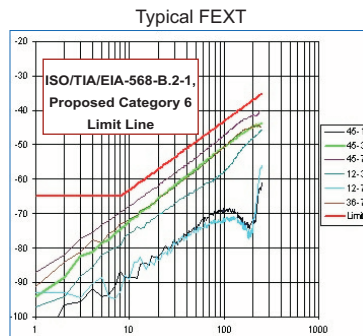
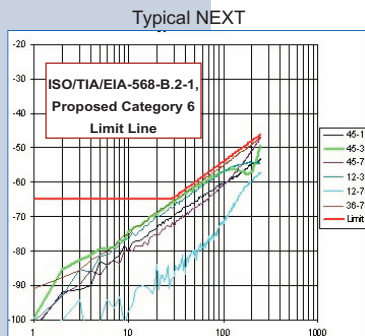
APPLICATION SUPPORT LIST

- Voice
- 4/16 Mbps Token Ring
- 100 VG Any LAN
- 100 Mbps TP-PMD
- 155/622 Mbps ATM
- 10BASE-T Ethernet
- 100BASE-TX Fast Ethernet
- 1000BASE-T Gigabit Ethernet
- TIA PN-4657 Gigabit Ethernet over Category 6 cabling
- 270 Mbps digital video
- Broadband video
- All other applications developed for operation over category 6 or class E cabling

TESTING COMPLIANCE:

- ANSI/TIA/EIA-568-A
- ANSI/TIA-EIA-568-A-2
- ANSI/TIA-EIA-568-A-5
- ISO/IEC 11801
- ANSI/TIA/EIA-568-B.2
- Proposed ISO/TIA/EIA-568-B.2-1, draft 9a Cat. 6
- Proposed ISO/IEC 11801 2nd edition, class E and category 6

CATEGORY 6 JACK TRANSMISSION PERFORMANCE



Near End Crosstalk

Far End Crosstalk

	1-2	1-3	1-4	2-3	2-4	3-4
100 MHz	-60.13	-56.99	-60.79	-57.07	-72.05	-55.17
250 MHz	-53.12	-49.24	-46.91	-54.26	-57.30	-46.54

	1-2	1-3	1-4	2-3	2-4	3-4
100 MHz	-69.20	-50.55	-47.10	-57.68	-71.44	-50.52
250 MHz	-60.61	-43.70	-40.03	-45.62	-55.71	-44.71